

## Product Brochure For Z01953

### Centre Lathe - CL-510

Ø510 x 1500mm Turning Capacity - Ø80mm Spindle Bore  
 Includes Digital Readout System, Quick Change Toolpost & Taper Turning Attachment



ORDER CODE:	Z01953
MODEL:	CL-510
Swing Over Bed (mm):	510
Distance Between Centres (mm):	1500
Spindle Bore (mm):	80
Swing In Gap (mm):	~
Swing Over Cross-slide (mm):	~
Digital Readout System Fitted:	Yes
Quick Change Toolpost Fitted:	Yes
Leadscrew Covers Fitted:	Yes
Taper Turning Attachment:	Yes
Coolant System:	Yes
Tool Height To Suit (mm):	25
Centre Height (mm):	255
Spindle Nose Size or Type:	D1-8 Camlock
Bed Width (mm):	300
Headstock Spindle Taper (MT):	7
Tailstock Taper (MT):	4
Cross Slide Travel (mm):	~
Compound Slide Travel (mm):	~
Leadscrew Type:	Metric
Metric Cross Feed (X-Axis) (mm/rev):	0.014 - 0.784
Imperial Cross Feed (X-Axis) (inch/rev):	~
Metric Longitudinal Feed (Z-Axis) (mm/rev):	0.031 - 1.70
Imperial Longitudinal Feed (Z-Axis) (inch/rev):	~
Metric Thread Steps & Pitch (No. / mm):	41 (0.1 - 14)
Imperial Thread Steps & TPI (No. / TPI):	60 (2 - 112)
3 Jaw Chuck Diameter (mm):	250
4 Jaw Chuck Diameter (mm):	320
Spindle Steps / Speeds (No. / rpm):	12 (25 - 1700)
Motor Power (kW / hp):	7.5 / 10
Voltage / Amperage (V / amp):	415
Nett Weight (kg):	2385

### Features

- 2 axis digital readout system
- Quick change toolpost
- Taper turning attachment fitted to saddle
- Triple bearings supporting headstock spindle
- Adjustable taper roller bearings providing spindle accuracy
- Precision 'V'-beds & headstock gears are all hardened & ground
- One piece cast iron base increases rigidity
- Overload protection on drive motor and coolant system
- Universal enclosed gearbox incorporating metric & imperial thread capabilities
- Inching button incorporated on the control panel for convenient spindle speed selection
- Foot operated spindle brake with safety cut out switch
- 300mm wide induction hardened heavy duty cast iron bed
- Removable gap bed allowing workpiece to swing up to 690mm
- Chuck guard fitted with safety micro switch
- Powered longitudinal and cross feeds
- Adjustable 5 position length-stop mechanism for accurate repetitive operation
- Micro adjustable saddle stop
- Dual calibrated cross feed dial incorporating metric & imperial graduations
- Coolant system with flexible hose enabling operator to manipulate flow direction
- Oil level sight glass for headstock and gearbox
- Low voltage halogen work light
- D1-8 camlock spindle for quick chuck removal

Product Brochure For Z01953

- 12 spindle speeds from 25-1700rpm
- Large 80mm spindle bore
- 7.5kW / 10HP 415V main motor

**Includes**

- 2 axis digital readout system
- Taper turning attachment
- Quick change toolpost
- Concertina leadscrew covers
- 250mm 3-jaw chuck with reverse jaws
- 320mm 4-jaw chuck
- 400m face plate
- Fixed steady with roller bearings
- Travelling steady with brass guides
- Dead centres
- Thread chasing dial
- Foot brake
- Coolant system
- LED Work light
- Rear splash guard
- Spindle reducing bush

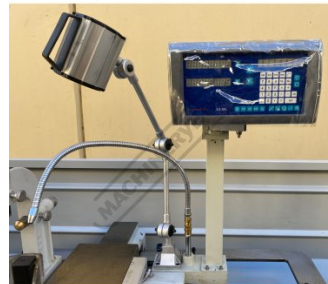
**Specific Features**



Front View



Left View



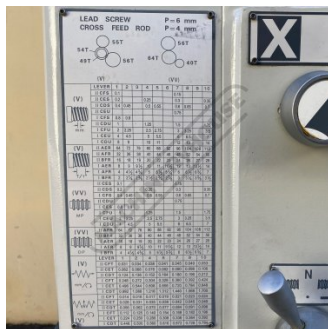
DRO



Taper Turning Attachment



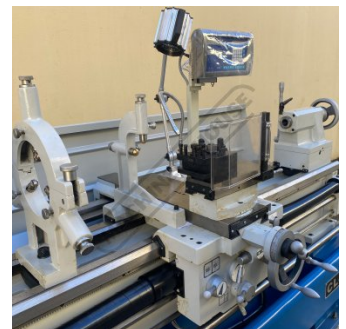
Headstock Controls



Feed Chart

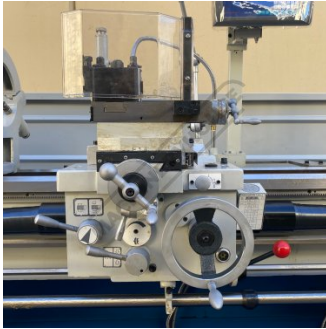


Feed Handles

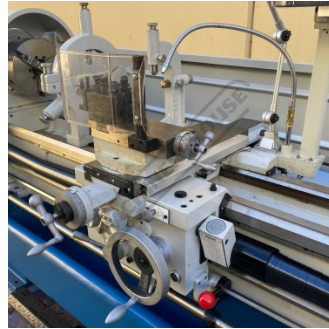


Saddle Left View

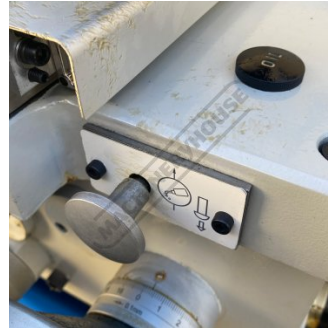
Product Brochure For Z01953



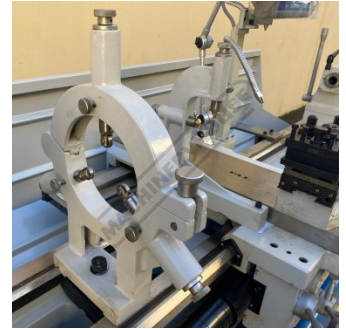
Saddle Front View



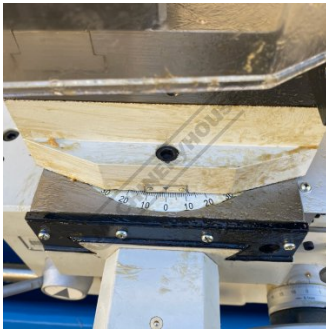
Saddle Right View



Lubrication



Steadies



Swivel Compound Slide



Saddle Hand Wheel Graduations



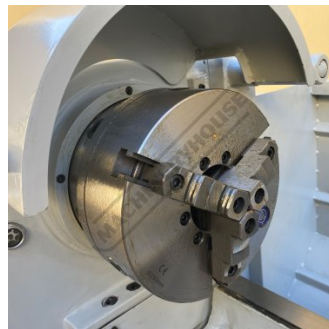
Cross Feed Handle



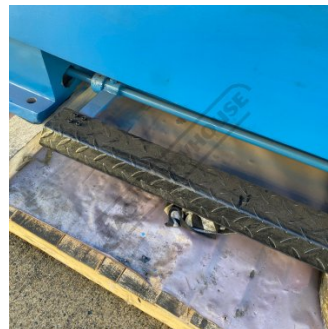
Thread Chasing Dial



Adjustable Length Stop



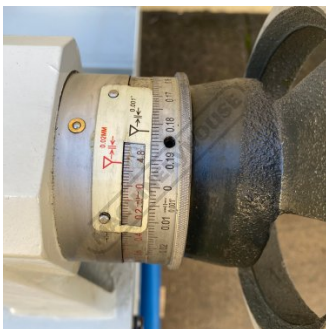
250mm 3 Jaw Chuck



Foot Brake



Hardened Bedways



Tailstock Hand Wheel



Includes Faceplate



Included Accessories

Product Brochure For Z01953

**Recommended Accessories**

**L048**  
Right Hand Turning Tool Holder

**L049**  
Left Hand Turning Tool Holder

**L041**  
Right Hand Turning Tool Holder

**L042**  
Left Hand Turning Tool Holder



**L453**  
Lathe Turning Tool Kit - 3 piece  
Insert Type

**L459**  
Lathe Threading Tool Kit - Insert  
Type

**L467**  
Professional Lathe Parting Tool  
Kit - Insert Type

**L294A**  
Quick Change Toolpost Holder -  
Std



Product Brochure For Z01953

**C046**  
 4MT Pipe Centre - 70° Cone



**C290**  
 Heavy Duty Drill Chuck - Keyed Type



**C294**  
 Industrial Drill Chuck - Keyless Type



**D454A**  
 4MT x JT3 Drill Chuck Arbor



**D424**  
 Drill Sleeve - Morse Taper



**D422**  
 Drill Sleeve - Morse Taper



**D1272**  
 Metric 135° Precision HSS Drill Set - 25 Piece



**D1282**  
 Imperial 135° Precision HSS Drill Set - 29 Piece



**D126**  
 Metric 135° Precision HSS Drill Set - 170 Pieces



**D119**  
 Metric 2MT HSS Drill Set



**S090A**  
 Soluble Metal Cutting Fluid - 1 Litre



**S090**  
 Soluble Metal Cutting Fluid - 5 Litre



Product Brochure For Z01953

S076

Cutting Tool Lubricant Fluid - 500ml



S077

Drilling, Tapping & Cutting Tool Lubricant Spray - 400g



S075

Cutting Tool Lubricant Paste - 200g



S074

Cutting Tool Lubricant Paste - 500g



S091

Soluble Metal Cutting Fluid - 20 Litre



G660

Lathe Leadscrew Cover Kit



A358

Sky Hook Lifting Device



A358A

Chuck Hook



L300

Magnetic Swarf Remover



M9991

Magnetic Floor Sweeper



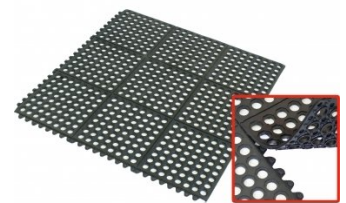
M800

Rubber Mat - Anti-Fatigue



M805

Rubber Mat - Anti-Fatigue



Product Brochure For Z01953

**O000**  
 SpillFix Universal Organic  
 Absorbent



**O043**  
 Rust & Corrosion Preventive



**O042**  
 General Purpose Lubricant &  
 Corrosion Inhibitor



**O040**  
 Rust & Corrosion Preventive



**O044**  
 Rust & Corrosion Preventive

