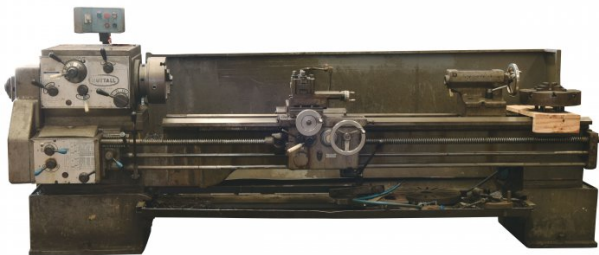


Product Brochure For XXX106

# LATHE 520 X 2300 - NUTTALL

80MM Bore  
 7.5HP 415V

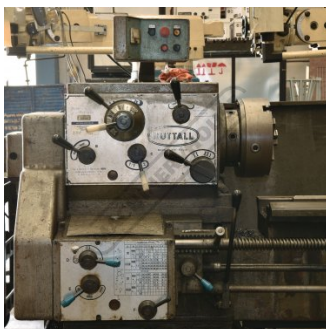
ORDER CODE:	XXX106
MODEL:	NUTTALL
Branch Location (State):	Sydney
Type:	Lathe
Brand:	-
Capacity:	520 X 2300
Speed Range (rpm):	-
Motor Power (kW / hp):	7.5 hp
Voltage / Amperage (V / amp):	415



**USED**  
  
 EQUIPMENT



## Specific Features



Controls



Parts



Spare Parts

Product Brochure For XXX106

**Recommended Accessories**

**L258**  
Taper Turning Attachment

**C980**  
5C Collet Lathe Adaptor

**L277**  
Vertical Mill Slide

**L295**  
Quick Change Toolpost

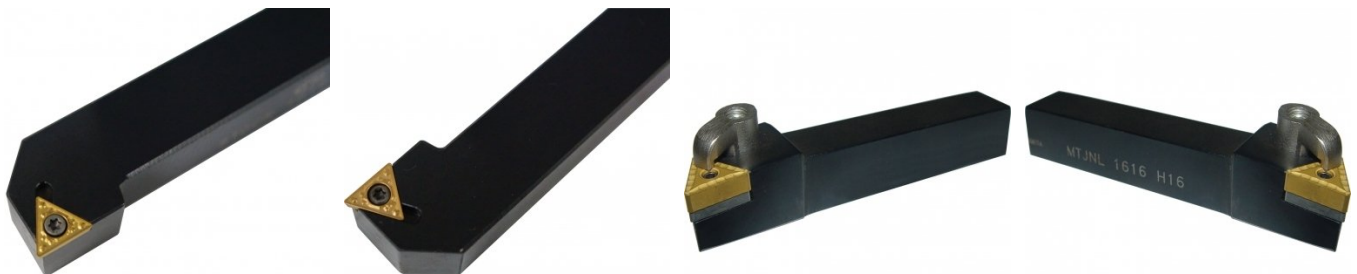


**L017**  
Right Hand Turning Tool Holder

**L018**  
Left Hand Turning Tool Holder

**L044**  
Right Hand Turning Tool Holder

**L045**  
Left Hand Turning Tool Holder



Product Brochure For XXX106

**L0077**  
 Lathe Turning Tool Kit - 7 piece  
 Insert Type



**L451**  
 Lathe Turning Tool Kit - 3 piece  
 Insert Type



**L465**  
 Professional Lathe Parting Tool  
 Kit - Insert Type



**L457**  
 Lathe Threading Tool Kit - Insert  
 Type



**L076**  
 Knurling Tool Holder Kit



**C052**  
 3MT Live Centre



**C045**  
 3MT Pipe Centre - 70° Cone



**C290**  
 Heavy Duty Drill Chuck - Keyed  
 Type



**C294**  
 Industrial Drill Chuck - Keyless  
 Type



**D443A**  
 3MT x JT3 Drill Chuck Arbor



**D1272**  
 Metric 135° Precision HSS Drill  
 Set - 25 Piece



**D1282**  
 Imperial 135° Precision HSS  
 Drill Set - 29 Piece



Product Brochure For XXX106

**D126**  
 Metric 135° Precision HSS Drill Set - 170 Pieces



**S090A**  
 Soluble Metal Cutting Fluid - 1 Litre



**S090**  
 Soluble Metal Cutting Fluid - 5 Litre



**S076**  
 Cutting Tool Lubricant Fluid - 500ml



**S077**  
 Drilling, Tapping & Cutting Tool Lubricant Spray - 400g



**S075**  
 Cutting Tool Lubricant Paste - 200g



**S074**  
 Cutting Tool Lubricant Paste - 500g



**S091**  
 Soluble Metal Cutting Fluid - 20 Litre



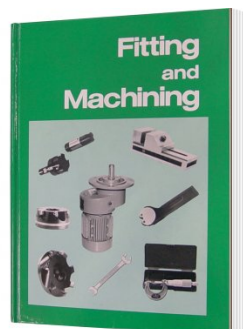
**G660**  
 Lathe Leadscrew Cover Kit



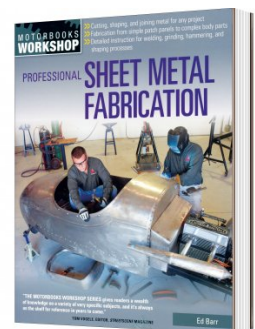
**G659**  
 Lathe Leadscrew Cover Kit - Concertina



**L341**  
 Fitting and Machining Technical Book



**L3455**  
 Professional Sheet Metal Fabrication Book



Product Brochure For XXX106

**L300**  
 Magnetic Swarf Remover



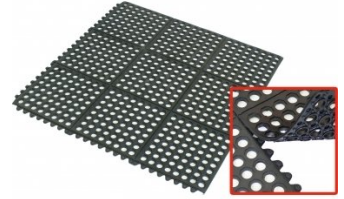
**M9991**  
 Magnetic Floor Sweeper



**M800**  
 Rubber Mat - Anti-Fatigue



**M805**  
 Rubber Mat - Anti-Fatigue



**O000**  
 SpillFix Universal Organic Absorbent



**O043**  
 Rust & Corrosion Preventive



**O042**  
 General Purpose Lubricant & Corrosion Inhibitor



**O040**  
 Rust & Corrosion Preventive



**O044**  
 Rust & Corrosion Preventive

