

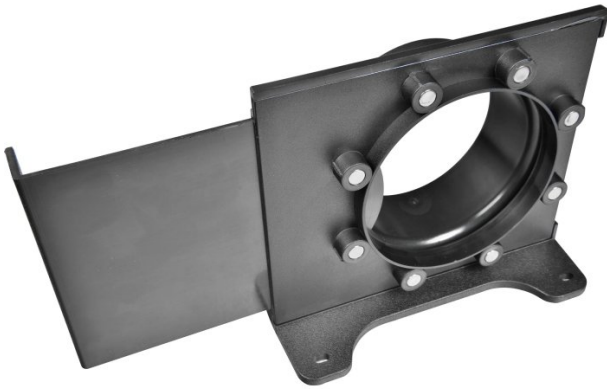
Product Brochure For W3354

## Magnetic Quick Connect Wall Mounted Blast Gate - DCAM-100W

Ø100mm External

<b>Ex GST</b>	<b>Inc GST</b>
<b>\$20.00</b>	<b>\$22.00</b>

ORDER CODE:	W3354
MODEL:	DCAM-100C
Type:	Magnetic Blast Gate
Application:	Timber
Size:	Ø100mm ID
Suits:	Dust Fittings
Nett Weight (kg):	0.2



### Description

The Magnetic quick connect dust fittings provide an easy, effortless way to connect flexible hose to machines and tools. Even if you misalign them, the magnets are strong enough to self-adjust and lock in place.  
 Note: Sold individually and requires more than one to operate

### Features

- Ø100mm OD port, suitable for use with 100mm (4") dust hose
- Wall mount design
- Made from tough PVC
- Magnets embedded into each fitting
- Self aligning connectors for quick and easy connections

### Includes

- 1 x 100mm (4") Magnetic Quick Connect one end and 100mm OD Port on other.

Product Brochure For W3354

**Specific Features**



Gate Open



Gate Closed



Side View

**Recommended Accessories**

**W344**  
 Wood Dust Accessory Kit



**W322A**  
 Flame Retardant Dust Hose -  
 Metal or Timber



**W3405**  
 Dust Hose Clamp



**W340**  
 Dust Hose Clamp



**W341**  
 Dust Hose Clamp



**W334A**  
 Dust Hose Stepped Reducer



**W3346**  
 Dust Hose Stepped Reducer



**W334B**  
 Dust Hose Joiner



Product Brochure For W3354

**W3395**  
 Quick Connect Adaptor



**W333**  
 Dust Hose Reducer



**W335**  
 Blast Gate



**W336**  
 Dust Hose Elbow - 90 Degree



**W337**  
 Dust Hose Y Adaptor



**W3375**  
 Dust Hose Y Adaptor



**W334**  
 Dust Hose Reducer



**W338**  
 Dust Hose Universal Dust Hood



**W339**  
 Dust Hose Floor Sweeper Attachment



**W338A**  
 Wood Lathe - Dust Chute Hood



**W338B**  
 Wood Lathe - Dust Chute - Big Gulp

