

Product Brochure For W07760

BuildPro Individual Plate - Standard Finish - TM62010SV-01

1000 x 160mm (LxW) Reversible Table Plates

Suits Ø16mm Welding Tables Holes



ORDER CODE:	W07760
MODEL:	TM62010SV-01
Type:	BuildPro & Individual Plate
Size:	1000 x 160 x 16mm
Quantity Per Pack (No.):	1
Suits:	Ø16mm Table Holes
Nett Weight (kg):	18

BuildPro™



Description

NEW REVERSIBLE SELF-LOCATING TABLE PLATES!

Use these Individual Plates to extend the length or width of your BuildPro® Welding Table. Attach Plates using BuildPro® Riser Blocks, or Connector Plates.

Use individual plates to extend the length or width of the BuildPro® Table.

BuildPro® Plates are precision ground steel, .625" thick.

The BuildPro's plate, slot, and hole system provides unlimited options in fixturing.

The very practical, modular design of the BuildPro® Table makes it easy to set-up and tear down for job at hand, big or small. Save time and money by holding, positioning and locating quickly and easily with a wide variety of BuildPro® clamps and accessories.

All BuildPro® Tables have 16mm thick steel plate with Ø16mm holes in a 50mm grid pattern. All tables, except BuildPro® MAX, have 40mm slots between plates.

Features

- Standard material finish
- Ø16mm holes
- 16mm plate thickness
- 1000 x 160mm Individual plate
- Ø22mm plate mounting holes, will require additional locating bushes & cap screws

Product Brochure For W07760

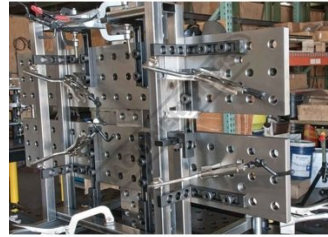
Specific Features



Use to Extend the Length or Width of the BuildPro Table



Precision Ground Steel



The BuildPro Plate Slot and Hole System Provides Unlimited Options in Fixturing

Recommended Accessories

W08048

BuildPro Adjustable Ball Lock Bolt



W07870

Riser Block



W07877

Riser Block



W08012

BuildPro V-Block Spacer



W08111

BuildPro Malleable Cast Iron Clamping Square



W08110

BuildPro Malleable Cast Iron Clamping Square



W08095

BuildPro Heavy Duty Riser Block

