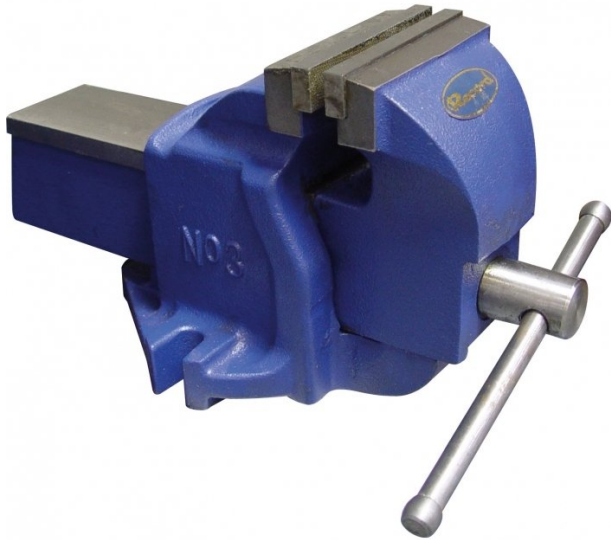


Product Brochure For V084

## 100mm Cast Iron Bench Vice - No. 3

Right Hand Offset  
 120mm Jaw Opening



ORDER CODE:	V084
Model:	No. 3
Type:	Bench
Jaw Width (mm):	100
Jaw Height:	~
Jaw Opening (mm):	120
Overall Length (Closed Jaws) (mm):	260
Overall Width (mm):	165
Overall Height (mm):	175
Clamping Force (KN):	~
Nett Weight (kg):	13.2



### Description

#### 100mm ENGINEERS BENCH VICE

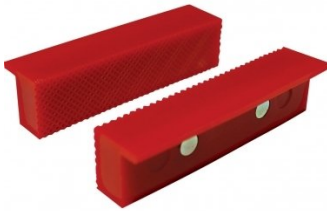
Rigid and robust, the body and sliding jaw are cast from close grained grey iron which is CNC manufactured on all friction surfaces for a smooth reliable action.

The jaws, handle and main screw are steel, the latter having a two-start rolled acme thread to speed the jaws from fully closed to fully open with a minimum of winding.

Product Brochure For V084

**Recommended Accessories**

V054  
 Plastic Magnetic Soft Jaws



V0544  
 Plastic Magnetic Soft Jaws



V053  
 Aluminium Magnetic Soft Jaws



V0537  
 Aluminium Magnetic Soft Jaws



V0534  
 Aluminium Magnetic Soft Jaws



V050  
 Vice Brake Bender - Suits  
 Bench Vices

