

Product Brochure For V0815

125mm Forge Steel Utility Bench Vice with Anvil & Pipe Jaws - 60421

140mm Jaw Opening

Ex GST Inc GST
\$360.00 \$396.00



| | |
|------------------------------------|-------|
| ORDER CODE: | V0815 |
| Model: | 60421 |
| Type: | Bench |
| Jaw Width (mm): | 125 |
| Jaw Height: | ~ |
| Jaw Opening (mm): | 140 |
| Overall Length (Closed Jaws) (mm): | 370 |
| Overall Width (mm): | 145 |
| Overall Height (mm): | 155 |
| Clamping Force (KN): | ~ |
| Nett Weight (kg): | 11.5 |



Description

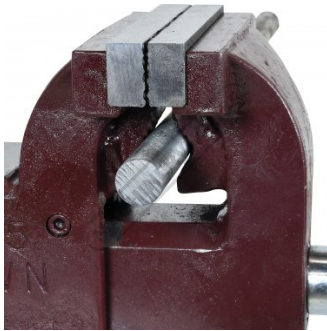
Manufactured from forged steel and fitted with pipe jaws, a large anvil, and replaceable case hardened jaws

Features

- Manufactured from forged steel
- Pipe jaws fitted under main jaws
- Large anvil area rear of vice
- Replaceable serrated case hardened steel jaws
- Corrosive resistant nickel plated handle
- Machined bearing surfaces

Product Brochure For V0815

Specific Features



Pipe Vice Jaws



Large Anvil



Side View



Right Side View

Recommended Accessories

V0532

Aluminium Magnetic Soft Jaws



V0539

Aluminium Magnetic Soft Jaws



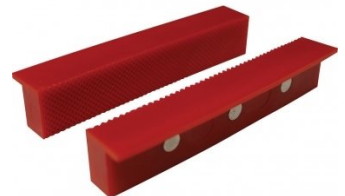
V0536

Aluminium Magnetic Soft Jaws



V0542

Plastic Magnetic Soft Jaws



V0546

Plastic Magnetic Soft Jaws



V051

Vice Brake Bender - Suits Bench Vices

