

Product Brochure For S906CG

Hydraulic NC Pressbrake - PB-135B

135T x 3200mm

NC - E200 Estun Control 2-Axis with Ballscrew Backgauge - Includes Safety Light Guarding



ORDER CODE:	S906CG
MODEL:	PB-135B
Control Unit (Type):	NC-E200 Estun
Nominal Pressure - Tonnage (Ton):	135
Nominal Pressure - Kilonewtons (kN):	1250
Length of Work Table (mm):	3200
Distance Between Columns (mm):	2650
Throat Depth (mm):	415
Maximum Open Height (mm):	390
Ram Stroke (mm):	130
Machine Axis (No.):	2
Safety Guarding System (Type):	Light Curtain System
Backgauge Travel (mm):	600
Table Bed Crowning System (Type):	-
Motor Power (kW / hp):	7.5 / 10
Motor Voltage (V):	415
Floor Space Requirements (L x W x H) (mm):	-
Nett Weight (kg):	8600



Description

MetalMaster Quality Pressbrakes feature high durability, and provide precision bending capabilities. The Pressbrake main frames are constructed from rolled, stress relieved solid steel to prevent distortion during the bending process and under extreme continuous loads.

MetalMaster Pressbrakes are produced in a high volume production process and therefore are able to be manufactured cost effectively, resulting in affordable price, representing value for money and quicker return on investment.

Featuring an adjustable synchronised torsion bar with positive stop system ensures consistent and accurate bending beam parallelism tolerance to 0.01mm via the digital Control unit.

All electrical components are of European quality supplied by, Telemecanique, Merlin Gerin and ABB.

Features

- NC E200 Estun programmable digital control stores up to 40 programs with 25 automatic progressive steps in each assuring accurate repeatability
- NC E200 Estun programmable hardened ballscrew backgauge supported by two guideways
- R-Axis finger stops mounted on liner guideways, each finger stop also incorporates a micro adjustable dial.
- Hydraulic / Mechanical ram, synchronised positive stop design, ram stroke controlled by precision mechanical nut depth stops built into each cylinder.
- Parallelism is ensured by torsion bar that can be easily adjusted by clutch system.
- Segmented heavy duty 86° offset top punch is segmented for return bend clearance, complete with European style quick release punch holder with an adjustable wedge clamping system for crowning. Intermediate clamp has safety key to stop punch dropping.
- Multi vee ('V') bottom die is made from one 3200mm solid die block design to handle heavy plate, safety edge vee ('V') is incorporated in bottom die block.
- Conveniently mounted control box on pendant for quick swivel and adjustments.
- Mono-block steel frame design, welded then machined to ensure minimal bed deflection under load
- Enclosed rear gate with micro safety switches complete with sliding rear door for easy access.
- European quick release style top punch and clamping system, allowing operator to change position of tooling to suit multiple requirements on complex applications. This feature ensures minimum down time, more productivity and results in reduced cost per finished product.
- Adjustable sliding blocks control the machines beam to provide desirable open height distance to the (slow speed) mute bending point. Operator adjustable locking knobs for quick adjustment, enables accurate repeatability and increased productivity.
- Metal safety guarding surrounding the machine with rear sliding door fitted and micro switch ensuring operator safety. Clear access panels placed at each end of machine allows the operator to clearly view tooling and work piece during bending operation. MetalMaster specially design gates to suit Australian safety requirements.
- Hydraulic MPA pressure gauge mounted on right side of support frame with quick adjusting pressure control knob allowing operator to

Product Brochure For S906CG

- accurately set the pressure required for different material thickness, incorporating with hydraulic overload protection.
 - Welded steel fabricated synchronised torsion bar horizontally supporting main bending beam to provide consistent parallelism that also can be adjusted for taper correction.
 - The vertical supporting slides are treated to provide greater wear resistance and increased accuracy.
 - Reinforced side frames providing additional support strength to machine throat
 - Includes safety control guarding system with light curtains fitted
 - Mild steel capacity is rated on hot rolled material with 250MPA
- Pre-Commissioning:
 1. Pressbrake is run & tested prior delivery
 2. Hydraulic oil is included with machine

Includes

- NC ESTUN E200 control on swivel pendant control unit
- NC ESTUN E200 controlled hardened ballscrew backgauge with 520mm travel
- Sliding front sheet support arms on linear guideways
- Individually adjustable R-Axis backgauge
- Micro adjustable back stops
- Inverter speed control
- Mobile dual operation foot control
- Segmented 86° offset top tooling
- Solid one piece four way multi vee (V) die block
- Quick action top tooling tool holder system with wedge type adjustment
- Metal constructed safety guarding surrounding machine with clear side viewing panels
- Integrated hydraulic system allowing rapid approach switching automatically to slow bend
- Oil tank level indicator

Specific Features



Right View



Left View



Enclosed Rear Safety Guarding



NC E200 ESTUN Controller



NC ESTUN E200 Main Screen



NC ESTUN E200 Program Screen



Adjustable and Sliding Front Sheet Supports on Linear Guideways

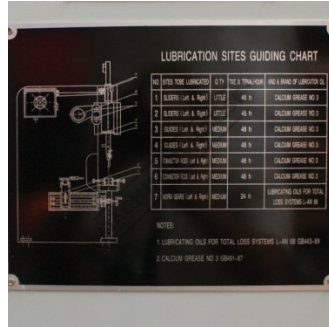


Sheet Support with Scale and Flip Over Stops

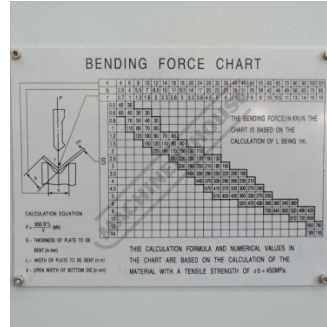
Product Brochure For S906CG



Adjustable Pressure Control



Lubrication Chart



Tonnage Calculation Chart

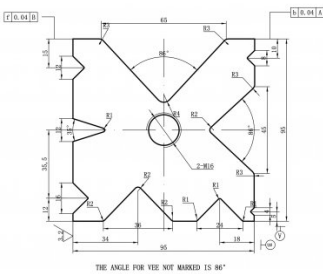


Shown with Optional Ball Transfer Tables - Order Code (L840)

Recommended Accessories

S993

95mm Die Block Pressbrake Tooling



S991

86° Top Punch Pressbrake Tooling



S991S

86° Top Punch Pressbrake Tooling - Segmented



S991F

86° Top Punch Pressbrake Tooling



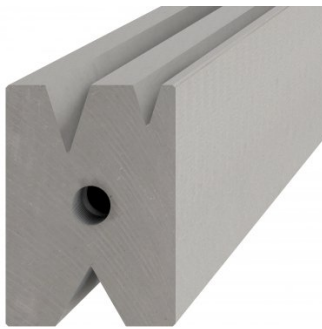
S996

15° Top Punch Pressbrake Tooling



S996A

60mm Die Block Pressbrake Tooling



S996B

60mm Die Rail Pressbrake Tooling



S988

Quick Action Intermediate Clamps

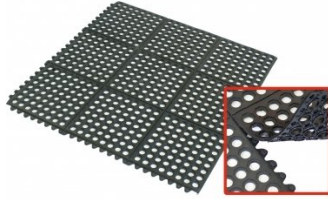


Product Brochure For S906CG

M800
 Rubber Mat - Anti-Fatigue



M805
 Rubber Mat - Anti-Fatigue



O000
 SpillFix Universal Organic Absorbent



O043
 Rust & Corrosion Preventive



O042
 General Purpose Lubricant & Corrosion Inhibitor



O040
 Rust & Corrosion Preventive



O044
 Rust & Corrosion Preventive



O004
 Superdraulic ISO 46 Hi Temp Hydraulic Oil

