

Product Brochure For S900

Hydraulic NC Pressbrake - PB-70E

70T x 2500mm

Estun NC-E21 Control 2-Axis with Leadscrew Backgauge



ORDER CODE:	S900
MODEL:	PB-70E
Control Unit (Type):	Estun NC-E21
Nominal Pressure - Tonnage (Ton):	70
Nominal Pressure - Kilonewtons (kN):	630
Length of Work Table (mm):	2500
Distance Between Columns (mm):	2050
Throat Depth (mm):	260
Maximum Open Height (mm):	325
Ram Stroke (mm):	90
Machine Axis (No.):	2
Safety Guarding System (Type):	~
Backgauge Travel (mm):	520
Table Bed Crowning System (Type):	~
Motor Power (kW / hp):	7.5 / 10
Motor Voltage (V):	415
Floor Space Requirements (L x W x H) (mm):	3100 x 1900 x 2500
Nett Weight (kg):	4400



Description

Metalmaster Press brakes are designed and tested to provide precision bending capabilities demanded in industry. The main structural frames are constructed from rolled, stress relieved solid steel to prevent distortion during the bending process and under extreme continuous loads.

Featuring a heavy duty adjustable torsion bar with a positive stop system ensures consistent and accurate bending.

All electrical components are of European quality supplied by leading brands such as Siemens, Schneider, Telemecanique, Merlin Gerin and ABB.

Note: Guarding systems are required on pressbrakes for OHS compliance. See options below

Features

- Hydraulic synchronised positive stop design, the ram stroke is controlled by a precision mechanical nut depth stop built into each cylinder, electronically controlled by Estun NC-E21 digital control assuring accuracy and repeatability.
- Mono-block steel frame design, welded, stress relieved and final machining ensures minimal bed deflection under load.
- Bending Parallelism is ensured by the oversize top beam and heavy duty torsion bar.
- Conveniently mounted control box on pendant for quick swivel and adjustments.
- Estun NC-E21 programmable digital control stores up to 40 unique programs with 25 automatic progressive bending steps in each individual program, assuring production accuracy & repeatability every time.
- Estun NC-E21 programmable leadscrew back gauge system, simply enter the desired measurement into the controller and press start, the back gauge then will move quickly into the position you have requested.
- Operator adjustable stroke open height & mute height switches enables increased productivity
- Adjustable bending pressure control allows the operator to quickly and accurately set the pressure required for different material. This user friendly system incorporates hydraulic overload protection.
- European style Intermediate top tool clamping system, featuring an adjustable wedge clamping system for crowning as well as a safety key to stop the punch dropping when changing punch positions.
- Segmented heavy duty 35° offset top punch is segmented for selective bend width applications and offset for return bend clearance.
- Multi vee ('V') bottom die is made from one 2500mm solid die block design to handle heavy plate, safety edge vee ('V') is incorporated in bottom die block.
- Sliding front material sheet supports enabling a wide range of material sizes to be aligned and supported at the required height. This feature is achieved with a "T" slot machined down the total length of the die bed; sheet supports are also adjustable vertically to assist in supporting material with return bends already folded.
- Rear sliding safety gate with micro switch combined with access panels placed at each end of machine allows the operator to clearly view tooling and work piece during the bending operation, Metalmaster specially design gates to suit Australian safety requirements
- The vertical top beam slides are treated to provide greater wear resistance and increased accuracy.

Product Brochure For S900

- Mild steel capacity is rated on hot rolled material with 250MPA
- Pre-Commissioning:
 1. Press brake is run & tested prior delivery
 2. Hydraulic oil is included with machine

Includes

- ESTUN NC- E21 control mounted on a swivel pendant for optimal ergonomics
- Adjustable front sheet support arms
- Emergency stop buttons strategically located on control panel and foot control
- Mobile dual operation foot control
- Segmented 35° offset top tooling
- Solid one piece four way multi vee (V) die block
- Top tooling tool intermediate holder system with wedge type adjustment
- Powered leadscrew back gauge with 520mm travel, operated by Estun NC-E21 control
- Oil tank level indicator
- Metal constructed safety guarding
- Integrated hydraulic system allowing rapid approach speed switching automatically to slow bend

Guarding systems are required on pressbrakes for OHS Compliance, See options below.

G Model : Light Curtain Guarding Safety System for OHS Compliance.

1. Italian made safety light curtains with protection height of 910mm ensures maximum safety for the operator.
2. One of the safest integrated dual channel monitored light curtain systems in Australia.
3. 100% Australian Designed electrical system and safety PLC system.
4. Top beam speed & stopping performance monitoring to ensure maximum safety, in the rare case of hydraulic valve failure.
5. Dual channel monitored safety system independently certified to be compliant with Australian standard AS 4024.1502-2006.



GL Model: Laser guarding safety system for OHS Compliance.

1. Laser guarding allows the operator to work closer to the press brake tooling without risk of injury.
2. Advanced Laser system fully compliant with the requirements of EN61496-1/2, EN12622 as well as AS 4024.1502-2006.
3. One of the safest integrated dual channel monitored safety systems in Australia.
4. 100% Australian Designed electrical system and safety PLC system.
5. Encoder speed & stopping performance monitoring ensures maximum safety in the rare case of hydraulic valve failure.
6. Dual channel monitored safety system has been independently certified to be compliant with Australian standard AS 4024.1502-2006.



Product Brochure For S900

Specific Features



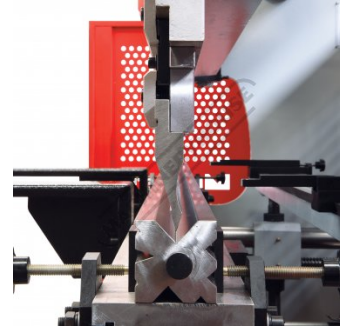
Enclosed Rear Safety Guarding



NC Estun E21 Controller



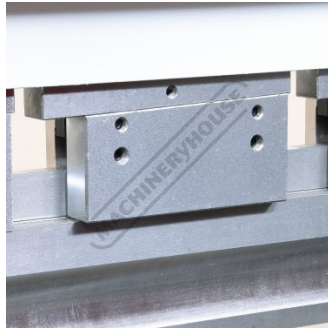
NC Estun E21



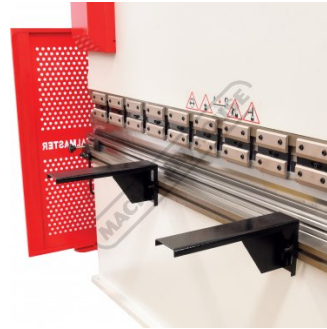
Top And Bottom Tooling



Intermediate Clamps



Adjustable Top Tool Taper Wedge System



Adjustable Front Sheet Supports



Tooling Bed Clamps



Estun NC E21 Control Ballscrow Backgauge



Estun NC E21 Control Ballscrow Backgauge 2



Backgauge Stops



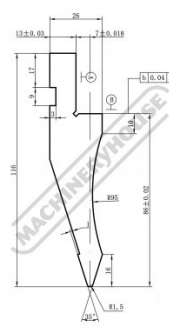
Synchronised Torsion Bar



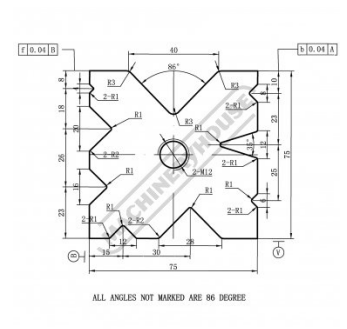
Adjustable Pressure Control



Mobile Foot Control

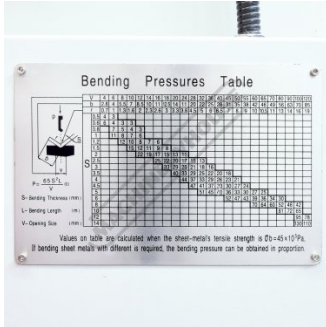


Segmented Top Punch

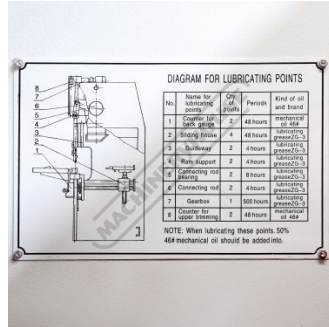


One Piece 4 Sided Die

Product Brochure For S900



Tonnage Calculation Chart



Lubrication Chart

Recommended Accessories

S988

Quick Action Intermediate Clamps



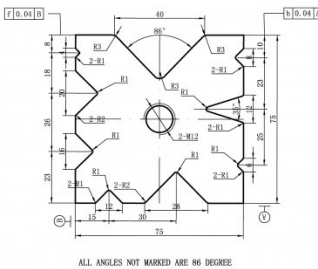
S989

35° Top Punch Pressbrake Tooling



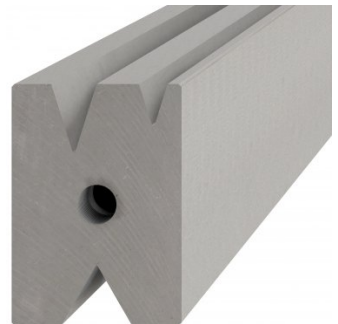
S9927

75mm Die Block Pressbrake Tooling



S996A

60mm Die Block Pressbrake Tooling



S996B

60mm Die Rail Pressbrake Tooling



Q200

Combination Set



Q200A

Combination Set



Q201

Universal Bevel Protractor

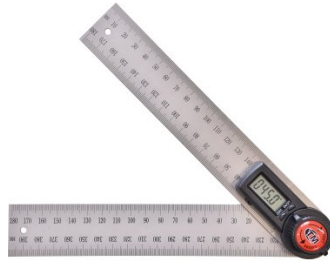


Product Brochure For S900

Q2105
Digital Height Gauge



M970
Digital Angle Rule



M972
Digital Angle Rule



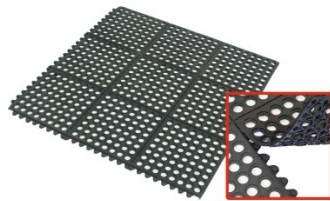
M974
Digital Angle Rule



M800
Rubber Mat - Anti-Fatigue



M805
Rubber Mat - Anti-Fatigue



O000
SpillFix Universal Organic Absorbent



O043
Rust & Corrosion Preventive



O042
General Purpose Lubricant & Corrosion Inhibitor



O040
Rust & Corrosion Preventive



O044
Rust & Corrosion Preventive



O004
Superdraulic ISO 46 Hi Temp Hydraulic Oil

