

Product Brochure For S896A

Hydraulic CNC Pressbrake - APHS 41200

200T x 4100mm, 5 Axis, Delem DA66T Touch Screen Control
 Includes Programmable X, Y1, Y2, V & R-Axis. CNC Table Crowning
 & Laser Guarding System



ORDER CODE:	S896A
MODEL:	APHS 41200
Control Unit (Type):	DELEM DA66T CNC
Nominal Pressure - Tonnage (Ton):	200
Nominal Pressure - Kilonewtons (kN):	2000
Length of Work Table (mm):	4100
Distance Between Columns (mm):	3550
Throat Depth (mm):	410
Maximum Open Height (mm):	530
Ram Stroke (mm):	260
Machine Axis (No.):	5
Safety Guarding System (Type):	Laser System
Backgauge Travel (mm):	750
Table Bed Crowning System (Type):	CNC Controlled System
Motor Power (kW / hp):	18.5 / 24.6
Motor Voltage (V):	415
Floor Space Requirements (L x W x H) (mm):	~
Nett Weight (kg):	12500



Description

Delem DA-66T CNC CONTROL UNIT

The new generation DA-Touch controls offers an even higher grade of efficiency in programming, operation and control of today's press brakes. Ease of use combined with state-of-the-art technology go hand in hand, improving productivity

The touch screen gives access to the proven Delem user-interface and enables direct navigation between programming and production. Functions are directly located where you need them, offering optimised ergonomics throughout the application.

The DA-66T offers 2D programming that includes automatic bend sequence calculation and collision detection. Full 3D machine set-up with multiple tool stations giving true feedback on the product feasibility and handling.

Highly effective control algorithms optimise the machine cycle and minimise set-up time. This makes using press brakes easier, more efficient and more versatile than ever.

- 2D graphical touch screen programming mode
- 3D visualisation in simulation and production
- “ high resolution colour TFT, 1280 x 1024 pixels, 16 bit
- Full touch screen control (IR-touch)
- Standard Windows networking
- Delem Modusys compatibility (module scalability and adaptivity)
- USB, peripheral interfacing
- User specific application support within the Controls multitasking environment
- Sensor bending & correction interface
- Colour LCD display
- Memory capacity 1 GB
- Product and tools memory 256MB
- 3D graphics acceleration
- 2nd HSB Modusys bus
- Emergency switch
- Integrated OEM-panel
- USB flash memory drive

Features

- Baykal machine frames consist of a monolithic structure with hot rolled steel sheets of Fe 520 welded together. The two housings

Product Brochure For S896A

(shoulders) are obtained from the same sheet to ensure the same elasticity under stress. The ram and table are also obtained from Fe 520 steel sheets and are opportunely dimensioned to avoid deflection

- The hydraulic cylinders are manufactured from high resistance steel incorporating chromium plated & ground rods. Completed with lapped pistons to ensure longevity of the hydraulic seals
- The hydraulic unit is made by major companies in the field. It consists of electronically controlled proportional valves with independent closed loop control of the two cylinders.
- 5 CNC Controlled Axis (Y1, Y2, X, R, V) as standard. Multi Axis available
- Full electronic Synchronisation with proportional valve technology.
- German manufactured Laser-Safe Guard System mounted at each end of machine ensuring correct interfacing and operator safety whilst in operation. Laser-safe is designed so each guard will slide up or down to allow for many different types and sizes of tooling enabling safety at the appropriate points as required by the Australian standards. Manual height adjustment with scales and lock for easy positioning.
- Sliding steel fabricated front sheet supports enabling a wide range of material sizes to be aligned and supported at the correct required width and height. This function is achieved by the precision linear guides mounted on the front apron parallel to the tooling length. This design can also be adjusted vertically to support material with return bends.
- Ram positions (Left & Right) are obtained from independent linear encoders whilst monitoring and adjusting proportional valves. This produces a double closed loop system, with guaranteed beam positioning of +/- 0.01mm (Y1 and Y2 Axis)
- Electronic control of bending parallelism is via the Delem DA-66T CNC Control
- Accuracy is further ensured by mounting the linear encoders on a C-frame connected directly to the Bed, rather than the side frames. This ensures that deflection of the side frames and uneven loads have no effect on Beam position.
- CNC Controlled Back-gauge:- X-Axis stroke 750mm with DC motor mounted on hardened and machined guides, translation via spherical recirculating ball screws
- Delem DA-66T CNC Control fully programmable with 2D graphics offline software included
- Axes are driven by ESA servo amplifiers ensuring the perfect interface with the ESA Control
- Precision linear scale measurement : HEIDENHAIN or GIVI MISURE
- Y1-Y2 - X-R CNC - controlled stroke axes
- CNC controlled hardened ballscrew backgauge with X-axis
- X axis range = 750mm speed = 350 mm/s max.
- 2 micrometric backgauge finger stops with lateral adjustment
- Front support arms fully adjustable mounted on linear rails x 2 off easy positioning over the complete working length of the machine
- Quality Siemens Electric control switch Gear is used
- Pendant control panel centralising all Press-Brake Functions
- Foot Pedal Control, Emergency stop buttons
- 2 axis tower type backgauge with AC servo motors
- X-R CNC axis ,
- bar length 2400 mm (size 200x150 mm)
- Z movement manual with double ball linear guides
- fixing on lateral housings
- "X" axes stroke 750 mm
- "R" axes stroke 160 mm
- 2 micro adjustable fingers with 2D stops sliding all long the bar
- Hardening on fingers
- All movements on ball screws and ball guides
- AC servo brushless motors
- "X" axis speed of 350 mm/sec
- "R" axis speed 240 mm/sec
- Mechanical accuracy 0.1 mm
- Hydraulics: Hoerbiger & Parker (German & USA)
- Electrics: Siemens or Telemecanique (German or French)
- Scales: Misure or Heidenhain (Italian or Dutch)
- Tooling: Technostamp or Roller (Italian)
- Control: ESA (Italy)
- PLC: AKAS
- Mild steel capacity is rated on hot rolled material with 250MPA

Includes

- Delem DA-66T 2D Graphical CNC Control
- Profile T lite offline graphical 2D software
- Y1-Y2 cylinder axis
- X - R Backgauge
- V - table NC auto crowning
- Quick release top tool clamping system
- AKAS Safety laser front guarding system
- Mechanical crowning on top intermediate clamps

Product Brochure For S896A

Specific Features



Rear Safety Guarding with Sliding Door



Mobile Foot Control



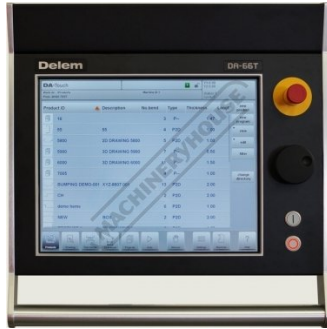
Sliding Front Sheet Supports on Linear Guideways



Front Sheet Support Height Adjustment



Laser Guarding System



Delem DA 66T CNC Control



Program Storage



Program Profile Drawing



Program Dieblock Tool Library



Program Top Punch Tool Library



Program Bend Sequence Simulation



Program Product Description



Program Auto Machine Parameters



Program Manual Machine Parameters



Machine Control Panel

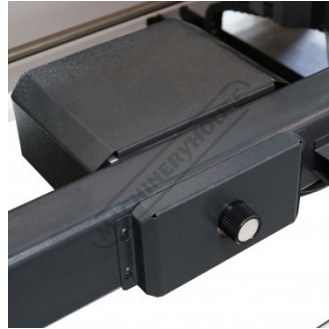


Electrical Cabinet

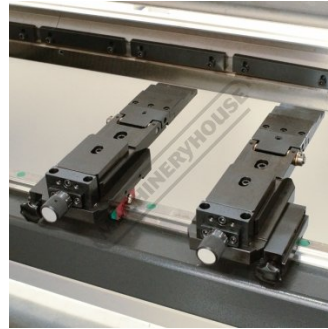
Product Brochure For S896A



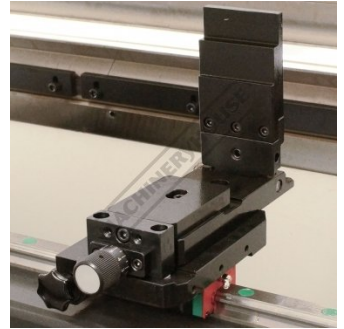
CNC Ball Screw Backgauge with R Axis



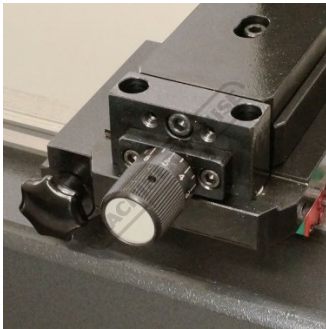
Backgauge Manual Fine Adjustment



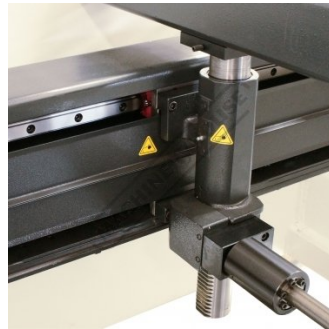
Micro Adjustment Backstop



Flip up Backstop



Backstop Micro Adjustment Dial



Ball Screw Backgauge with Linear Guideways



CNC Table Crowning W Axis



Quick Action Intermediate Clamps



Shown with Optional Ball Transfer Tables - Order Code (L840)

Product Brochure For S896A

Recommended Accessories

S990
 35° Top Punch Pressbrake Tooling



S990S
 35° Top Punch Pressbrake Tooling - Segmented



S991
 86° Top Punch Pressbrake Tooling



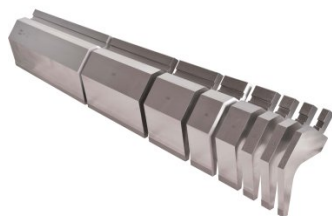
S991S
 86° Top Punch Pressbrake Tooling - Segmented



S9920
 86° Top Punch Gooseneck Pressbrake Tooling



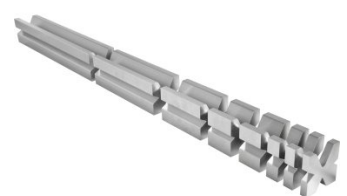
S9920S
 86° Top Punch Gooseneck Pressbrake Tooling - Segmented



S99230
 Dieblock - 4 Way 60 Degrees



S99231
 Dieblock - 4 Way 60 Degrees - Segmented

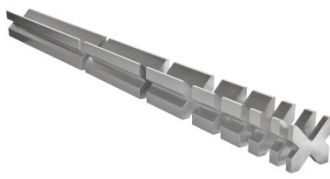


Product Brochure For S896A

S99234
 Dieblock - 4 Way 86 Degrees



S99235
 Dieblock - 4 Way 86 Degrees - Segmented



S99240
 Dieblock Heavy Duty, Single V 63mm 86 Degrees



S99242
 Dieblock Heavy Duty, Single V 80mm 86 Degrees



S99244
 Dieblock Heavy Duty, Single V 100mm 86 Degrees



Q200
 Combination Set



Q200A
 Combination Set



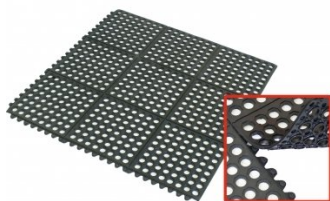
Q201
 Universal Bevel Protractor



M800
 Rubber Mat - Anti-Fatigue



M805
 Rubber Mat - Anti-Fatigue



O043
 Rust & Corrosion Preventive



O042
 General Purpose Lubricant & Corrosion Inhibitor



Product Brochure For S896A

O040
Rust & Corrosion Preventive



O044
Rust & Corrosion Preventive



O004
Superdraulic ISO 46 Hi Temp Hydraulic Oil

