

Product Brochure For S886D

CNC Press brake DELEM DA66T - 5 Axis - APHS-31200

200T x 3100mm, 5 Axis, Delem DA66T Touch Screen Control
 Includes Programmable X, Y1, Y2, V & R-Axis. CNC Table Crowning
 & Laser Guarding System



ORDER CODE:	S886D
MODEL:	APHS-31200
Control Unit (Type):	DELEM DA66T CNC
Nominal Pressure - Tonnage (Ton):	200
Nominal Pressure - Kilonewtons (kN):	2000
Length of Work Table (mm):	3100
Distance Between Columns (mm):	2550
Throat Depth (mm):	410
Maximum Open Height (mm):	540
Ram Stroke (mm):	260
Machine Axis (No.):	5
Safety Guarding System (Type):	Laser System
X Axis Backgauge Travel (mm):	750
R Axis Backgauge Travel (mm):	~
Z1 & Z2 Axis Back gauge fingers:	~
Table Bed Crowning System (Type):	CNC Controlled System
Motor Power (kW / hp):	18.5 / 25
Motor Voltage (V):	415
Floor Space (mm):	~
Nett Weight (kg):	10000



Description

Delem DA-66T CNC CONTROL UNIT

The new generation DA-Touch controls offers an even higher grade of efficiency in programming, operation and control of today's press brakes. Ease of use combined with state-of-the-art technology go hand in hand, improving productivity.

The touch screen gives access to the proven Delem user-interface and enables direct navigation between programming and production. Functions are directly located where you need them, offering optimised ergonomics throughout the application.

The DA-66T offers 2D programming that includes automatic bend sequence calculation and collision detection. Full 3D machine set-up with multiple tool stations giving true feedback on the product feasibility and handling.

Highly effective control algorithms optimise the machine cycle and minimise set-up time. This makes using press brakes easier, more efficient and more versatile than ever.

2D graphical touch screen programming mode
 17" high resolution colour TFT
 Full touch screen control (IR-touch)
 Windows application suite
 Standard Windows networking
 3D graphics acceleration
 Delem Modusys compatibility (module scalability and adaptivity)
 USB flash memory drive
 Open system architecture
 Sensor bending & correction interface
 Profile-TL 2D offline software

Features

- Baykal machine frames are manufactured from hot rolled steel sheets of Fe 520. The two side frames are obtained from the same sheet to ensure the same elasticity under stress. The ram and table are also manufactured from Fe 520 steel and are designed to avoid deflection.
- The hydraulic cylinders are manufactured from high resistance steel chromium plated & ground to size. Cylinder pistons are lapped to ensure longevity of the hydraulic seals
- The hydraulic unit consists of electronically controlled proportional valves with independent closed loop control of the two cylinders providing full synchronous control.
- German manufactured Laser Safety Guard System mounted at each end of machine ensuring correct interfacing and operator safety whilst in operation. The Laser system is designed so each guard will slide up or down to allow for many different types and sizes of tooling

Product Brochure For S886D

- enabling safety at the appropriate points as required by the Australian standards. Manual height adjustment with scales and lock for easy positioning.
- Sliding front sheet supports enable a wide range of material sizes to be aligned and supported at the correct required width and height. The sheet supports are mounted on precision linear guides for ease of movement. This design can also be adjusted vertically to support material with return bends.
 - Ram positions (Left & Right) are obtained from independent linear encoders whilst monitoring and adjusting proportional valves. This produces a closed loop system, with guaranteed beam positioning of +/- 0.01mm (Y1 and Y2 Axis)
 - Accuracy is further ensured by mounting the linear encoders on a C-frame connected directly to the Bed, rather than the side frames. This ensures that deflection of the side frames and uneven loads have no effect on Beam position.
 - CNC Controlled Axis (Y1, Y2, X, R, & V) as standard. Multi Axis available
 - Backgauge:- X-R with AC servo brushless motors
 - "X" axes stroke 750mm
 - "X" axis speed 350mm/sec
 - "R" axes stroke 160mm
 - "R" axis speed 240mm/sec
 - Mechanical accuracy 0.1mm
 - Micro adjustable fingers with hardened 2D stops mounted on linear guideways
 - Precision linear scale measurement : GIVI MISURE
 - Front support arms fully adjustable mounted on linear rails
 - Quality Siemens Electric control switch Gear is used
 - Pendant control panel centralising all Press-Brake Functions
 - Foot Pedal Control
 - Hydraulics: Hoerbiger & Parker (German & USA)
 - Electrics: Siemens or Telemecanique (German or French)
 - Scales: Misure (Italian)
 - Tooling: Technostamp or Roller (Italian)
 - Mild steel capacity is rated on hot rolled material with 250MPA

Includes

- Delem DA-66T 2D Graphical CNC Control
- Profile-TL 2D offline software
- X-R Backgauge
- V - table NC auto crowning
- Quick release top tool clamping system
- AKAS Safety laser front guarding system
- Mechanical crowning on top intermediate clamps
- Automatic crowning on bottom table
- Narrow bottom table for Euro style tooling

Specific Features



Rear Safety Guarding with Sliding Door



Laser Guarding System



CNC Table Crowning W Axis



Delem DA 66T CNC Control

Product Brochure For S886D



Program Storage



Program Profile Drawing



Program Dieblock Tool Library



Program Top Punch Tool Library



Program Bend Sequence Simulation



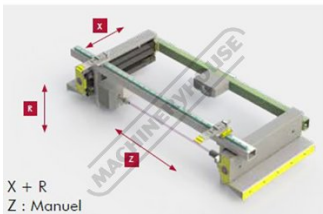
Program Product Description



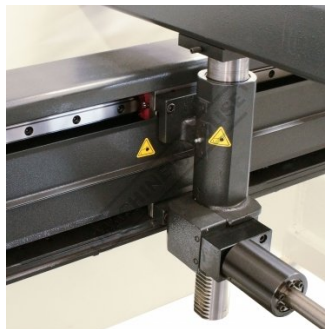
Program Auto Machine Parameters



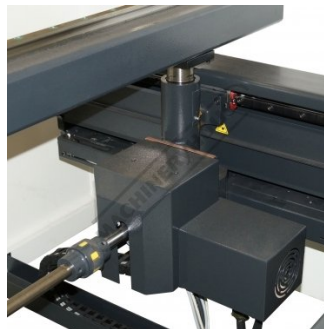
Program Manual Machine Parameters



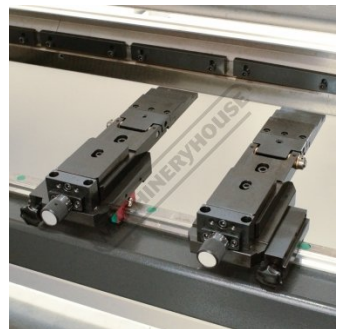
X-R Backgauge



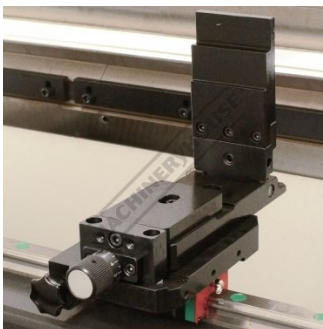
Ball Screw Backgauge with Linear Guideways



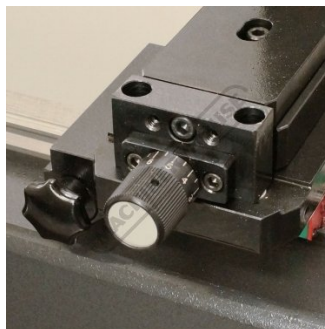
CNC Ball Screw Backgauge with R Axis



Micro Adjustment Backstop



Flip up Backstop



Backstop Micro Adjustment Dial



Quick Action Intermediate Clamps



Sliding Front Sheet Supports on Linear Guideways

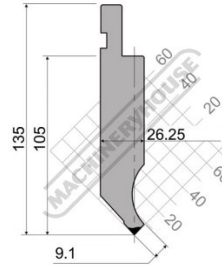
Product Brochure For S886D



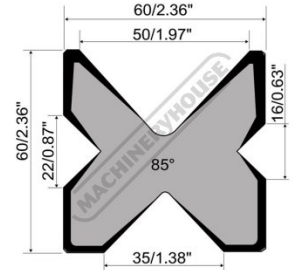
Front Sheet Support Height Adjustment



Mobile Foot Control



Top Tooling



Multi V Die Block

Recommended Accessories

S990

35° Top Punch Pressbrake Tooling



S990S

35° Top Punch Pressbrake Tooling - Segmented



S991

86° Top Punch Pressbrake Tooling



S991S

86° Top Punch Pressbrake Tooling - Segmented



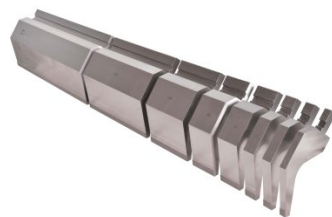
S9920

86° Top Punch Gooseneck Pressbrake Tooling



S9920S

86° Top Punch Gooseneck Pressbrake Tooling - Segmented



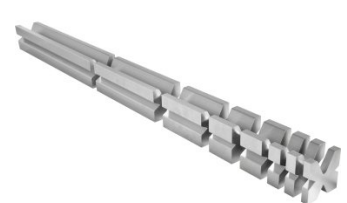
S99230

Dieblock - 4 Way 60 Degrees



S99231

Dieblock - 4 Way 60 Degrees - Segmented

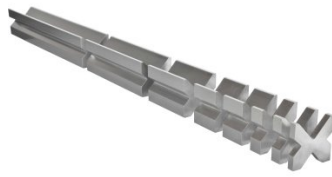


Product Brochure For S886D

S99234
 Dieblock - 4 Way 86 Degrees



S99235
 Dieblock - 4 Way 86 Degrees - Segmented



S99240
 Dieblock Heavy Duty, Single V 63mm 86 Degrees



S99242
 Dieblock Heavy Duty, Single V 80mm 86 Degrees



S99244
 Dieblock Heavy Duty, Single V 100mm 86 Degrees



Q200
 Combination Set



Q200A
 Combination Set



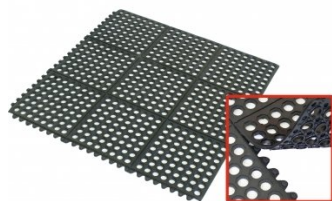
Q201
 Universal Bevel Protractor



M800
 Rubber Mat - Anti-Fatigue



M805
 Rubber Mat - Anti-Fatigue



O043
 Rust & Corrosion Preventive



O042
 General Purpose Lubricant & Corrosion Inhibitor



Product Brochure For S886D

O040
Rust & Corrosion Preventive



O044
Rust & Corrosion Preventive



O004
Superdraulic ISO 46 Hi Temp Hydraulic Oil

