

Product Brochure For S633

Bead Roller - Motorised Variable Speed - MBR-610XT

1.2mm Mild Steel Thickness Capacity & 610mm Throat Depth

Includes 12 Sets of Hardened Rolls

Ex GST **Inc GST**
\$1,250.00 **\$1,375.00**



ORDER CODE:	S633
MODEL:	MBR-610XT
Machine (Type):	Bead Roller - Motrised
Mild Steel - Thickness Capacity (mm / Gauge):	1.2 / 18
Aluminium - Thickness Capacity (mm / Gauge):	1.6 / 16
Throat Depth Maximum (mm):	610
Throat Height (mm):	105
Roll Diameter (mm):	70
Output Drive Speed (rpm):	0 - 18
Motor Power (kW / hp):	0.25 / 0.33
Voltage / Amperage (V / amp):	240 / 10
Nett Weight (kg):	115



Description

The MBR-610XT motorised bead roller is now updated with extra features to make your bead rolling experience even better. We have now included a quick release lever to the upper die shaft allowing you to remove your panel & then quickly go back to the same position without having to wind the adjustment handle. We have also listened to our customers wanting more control & torque at slow speeds, so we updated the reduction gear box ratio to achieve a slower output speed whilst retaining higher torque.

With a 300w variable speed motor, this motorised bead roller is not only much easier to use compared to manual machines, but the variable speed gives you the fine control to produce consistent & professional results. The frame is manufactured using 2 pieces of heavy 8mm steel plates & interconnecting spacers to ensure a strong frame helping support a large 610mm throat depth making it perfect for strengthening any type of car roof, body panels, seals & guards etc. The MBR-610XT features an adjustable top shaft with the ability to offset the dies up to 25mm & with the drive shafts supported in quality greaseable bronze bearing bushes which incorporate thrust ball bearings for additional support & accuracy.

The machine comes standard with 12 sets of the most common die profiles suitable any metal forming enthusiast & also includes a heavy tubular stand with a storage rack to store your dies within easy reach.

Features

- New quick release mechanism on the top shaft
- Variable speed dial for superior control on all applications
- Forward / reverse foot pedal switches with emergency stop
- Heavy duty steel plate construction for increased rigidity
- Ø70mm hardened & keyed rollers for positive drive
- Both top & bottom shafts are geared & electrically driven
- 1.2mm mild steel capacity with 610mm throat
- Top shaft adjusts horizontally to easily & accurately align dies
- Ø25mm drive shafts with grease-able bronze bushes, Ø20mm spigot for mounting rollers
- Adjustable material depth guide
- Throat design allows clearance for up to 80mm on 90° return bends
- 300W 240V variable speed motor with reduction gearbox
- Fitted with two rear wheels to allow easy mobility

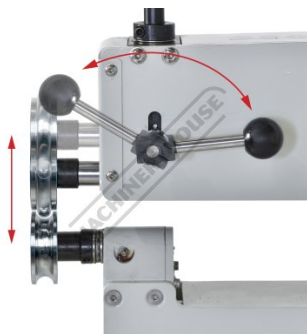
Includes

- 12 sets of hardened rolls (Ø20mm Bore):
- 5/32" (4mm) beading dies

Product Brochure For S633

- 1/4" (6.35mm) beading dies
- 3/8" (9.5mm) beading dies
- 15/32" (12mm) beading dies
- 19/32" (15mm) beading dies
- 1/16" (1.6mm) flanging dies
- 1/8" (3mm) flanging dies
- 1/4" (6.35mm) flanging dies
- 3/8" (9.5mm) flanging dies
- Ogee beading dies
- Wiring dies
- Shearing dies

Specific Features



Quick Release Lever



Adjustable Depth Gauge



Adjustable Top Roller



Locking Levers For Top Shaft Die Alignment



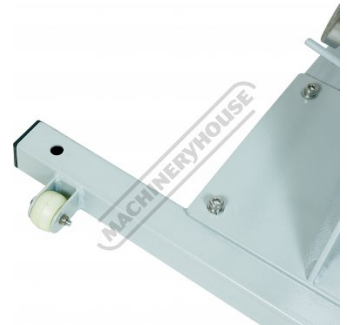
Speed Control and On Off Safety Switch



Forward & Reverse Foot Control With Emergency Stop Switch



Upper Mandrel Adjustment Handle



2 X Rear Wheels For Mobility



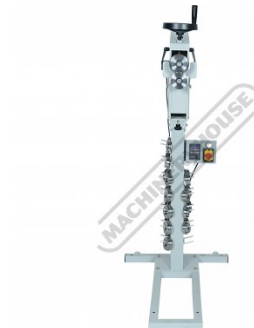
Motor



Die Rack Holders Left View



Die Sets



Front View

Product Brochure For S633



Left View



Side View

Recommended Accessories

S6338
 Steel Support Work Table



S6331
 Forming Bead Roller Kit



S6337
 Hem Bead Roller Sets



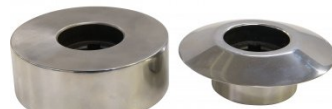
S6332
 Radius Bead Roller Sets



S6333
 Louvre Bead Roller Set



S6334
 Tipping Bead Roller Set



S6341
 Nylon Artwork Bead Roller Set



S6342
 Steel Artwork Bead Roller Set



Product Brochure For S633

S6335
Blank Bead Roller Sets

S6336
Mandrel Roller Holder

