

Product Brochure For S290

Workshop Sandblasting Cabinet - SB-220

Inside Cabinet 870 x 500 x 350-500mm (L x W x H)

Includes Internal LED Light

New Release

Ex GST

Inc GST

\$350.00

\$385.00



ORDER CODE:	S290
MODEL:	SB-220
Approx. Inside Cabinet Size (L x W x H) (mm):	870 x 500 x 350-500
Internal Light (Type):	LED Light
Recommended (FAD) @ 80psi (CFM / Lpm):	13 CFM (368 L/min)
Floor Space with Door/Lid Open (L x W x H) (mm):	900 x 650 x 1820
Nett Weight (kg):	46.5



Description

The SB-220 is a great-value, medium-sized workshop sandblasting cabinet designed for practical and reliable everyday use. The top-opening, gas-strut-assisted lid provides smooth, controlled opening and easy access to your workpieces, improving both safety and convenience. A large clear acrylic viewing window combined with an internal LED light ensures clear visibility during operation. A inlet port is fitted as standard, allowing the cabinet to be easily adapted to your existing vacuum or dust extraction system to remove fine dust and airborne particles and maintain a clear working environment. For best results, it can also be paired with the SB-C870 Industrial Sandblasting Dust Cyclone Extractor.

The SB-290 further enhances value with a gravity-feed metering valve that delivers the sandblasting media at the correct ratio, ensuring efficient performance, reduced media waste, and consistent, high-quality blasting results—making it a cost-effective solution for any workshop.

Features

- Top opening lid for easy access
- Fitted with a gravity feed metering valve for optimal performance
- Powder coated steel construction
- Inlet ready to adapt a filter system at rear of sandblast cabinet
- Internal LED lighting system
- Door safety latches
- Complete with large clear acrylic screen with replacement shields, gloves, gun & ceramic tips
- Requires compressor delivering minimum 13CFM (368L/min) FAD @ 80 psi
- Recommended to be used with an optional dust collector system
- Recommended to use 2 x 25kg abrasive grit
- Please Note:
- It is advisable to use an appropriate silastic sealant upon assembling cabinet
- Regular maintenance to clean dust collector filter bag is required

Includes

- Ø4mm, Ø5mm, Ø6mm, Ø7mm Ceramic Tips

Optional Accessories

- SB-C870 - Industrial Sandblasting Dust Cyclone Extractor - 2 Stage Filtration System. Order Code: (S310)

2. DETERMINE YOUR APPLICATION (PSI & CFM)

HOME / HOBBY USE
 Light blasting, spot cleaning & small parts

- ✓ Intermittent use
- ✓ General purpose

INDUSTRIAL USE
 Heavy-duty blasting continuous operation

- ✓ Continuous duty cycle
- ✓ Maximum productivity

SANDBLAST CABINET - AIR CONSUMPTION (FAD CFM)

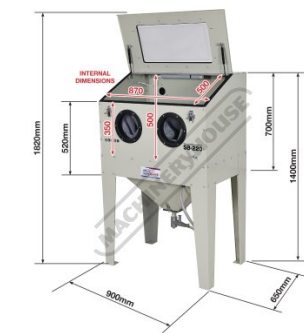
MODEL	AIR JET Ø (ORIFICE)	HOBBY USE			INDUSTRIAL USE		
		CFM @ 40 PSI	CFM @ 60 PSI	CFM @ 70 PSI	CFM @ 80 PSI	CFM @ 90 PSI	CFM @ 100 PSI
SB-220	Ø 2.5mm	8 CFM (227 L/min)	10 CFM (283 L/min)	12 CFM (340 L/min)	13 CFM (368 L/min)	15 CFM (425 L/min)	16 CFM (453 L/min)
SB-375F SB-420 SBC-990	Ø 3.2mm	12 CFM (340 L/min)	17 CFM (481 L/min)	19 CFM (538 L/min)	21 CFM (595 L/min)	24 CFM (680 L/min)	26 CFM (736 L/min)

ⓘ FAD (Free Air Delivery): Actual usable airflow at the outlet. Measured at the compressor outlet under stated PSI.

Specific Features



Internal Dimensions



Dimensions



Side View Lid Open



Rear Left View

Product Brochure For S290



Left Side View



Switches for Light and Dust Collector



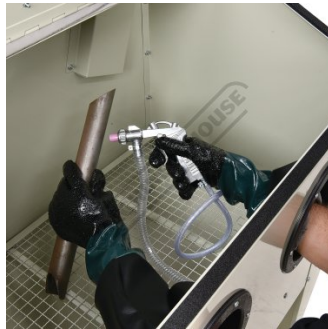
Compressed Air Inlet Connection



Abrasive Measuring Valve



Gloves



Action Shot with Gloves Gun



Gun



Hopper with Removable Grates



Internal Light



Dust Collector 63mm Outlet



Included Accessories

Product Brochure For S290

Recommended Accessories

SC004
PVC SHEET PKT 5



6SC0059
NOZZLES 4.0 MM PKT 2



6SC0060
NOZZLES 5.0MM PKT 2



6SC0061
NOZZLES 6.0MM PKT 2



6SC0062
NOZZLES 7.0MM PKT 2



6SC0042
SANDBLASTING GUN



2SC0035
GLOVES PAIR



S296
Sandblasting Beads - Garnet



Product Brochure For S290

S295

Sandblasting Beads - Garnet



S297

Sandblasting Beads - Inda



S310

Industrial Sandblasting Dust
Cyclone Extractor

