

Product Brochure For S1062

## Brobo Cold Saw - Bench Mounted - S315G

80 x 120mm 90° Rectangle Capacity  
 415V - Ø315mm Blade, Dual Speed 42/85rpm



ORDER CODE:	S1062
MODEL:	S315G
Cutting Head Action:	Manual
Operation Type:	45° left, straight 90°, 45° right.
Round Capacity @ 90° / 45° (mm):	100 / 100
Square Capacity @ 90° / 45° (mm):	90 / 80
Rectangle Capacity @ 90° / 45° (WxH) (mm):	80 x 120 / 80 x 80
Blade Size - Diametre. x Bore (Ø) (mm):	315 x 40
Vice Clamping Fixture:	Manual
Coolant System:	Yes
Table Working Height (with Stand) (mm):	968
Blade Speed (rpm):	42 / 85
Motor Power (kW / hp):	2.2 / 3
Voltage / Amperage (V / amp):	415 / 50Hz
Nett Weight (kg):	173



### Description

Engineered for heavy duty applications, Brobo Group's S315G, S350G & S400G ferrous metal cutting saws are specifically developed for precision cutting of steel profiles, solids and tubes. Their superior performance and reliability ensures a burr-free, milled finish on every cut.

### Features

- Quick action mitering
- Mitering locking device stops at 45° left, straight 90° and 45° right
- Fully integrated coolant system provided on all machines
- Spindle and drive unit immersed in oil solution and enclosed within gearbox housing for smooth performance and reduced machine wear
- Every unit is provided with a high speed steel blade for general purpose cutting of ferrous solid and tube profiles
- Saws supplied with facilities for bench mounting onto workbench
- Trigger Switch (DMT) to activate Machine

### Includes

- Coolant pump system
- Blade

### Optional Accessories

- Dual Arm Single Manual Vice
- Pneumatic Air Vice Clamping
- Roller Conveyor with Steel Rollers
- Conveyor Mounting Brackets LHS & RHS
- Feed Roller Attachments
- Adjustable Conveyor Stands
- Broborule Length Stop Kits

Product Brochure For S1062

CUTTING RANGE	PRODUCT	315G	350G	400G
Specifications are for <b>NEW</b> blades only.	90° 45°	100	118	140
		100	110	125
Cutting dimensions will reduce with re-sharpening of blades	90° 45°	90	105	115
		80	90	105
	90° 45°	80 x 120	85 x 150	100 x 150
		80 x 80	95 x 110	100 x 110

Specific Features



G Model Clamping



Vice Assembly

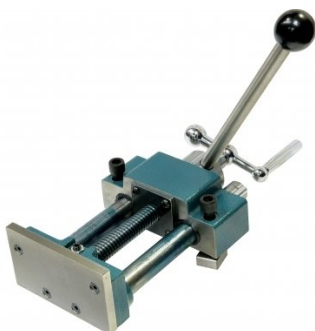
Recommended Accessories

S100  
Vice

S090  
Soluble Metal Cutting Fluid - 5 Litre

L812  
Roller Conveyor

L814  
Roller Conveyor Stand



Product Brochure For S1062

**S092**  
 BROBOLUBE Industrial  
 Gearbox Oil



**S134**  
 HSS Cold Saw Blade



**S134A**  
 HSS Cold Saw Blade



**S134B**  
 HSS Cold Saw Blade



**S134C**  
 HSS Cold Saw Blade



**S134D**  
 HSS Cold Saw Blade



**S134E**  
 HSS Cold Saw Blade



**S134F**  
 HSS Cold Saw Blade



**S135**  
 HSS + COBALT Cold Saw  
 Blade



**S135A**  
 HSS + COBALT Cold Saw  
 Blade



**S135B**  
 HSS + COBALT Cold Saw  
 Blade



**S135C**  
 HSS + COBALT Cold Saw  
 Blade



Product Brochure For S1062

**S135D**  
 HSS + COBALT Cold Saw  
 Blade



**S135E**  
 HSS + COBALT Cold Saw  
 Blade



**S090A**  
 Soluble Metal Cutting Fluid - 1  
 Litre



**S091**  
 Soluble Metal Cutting Fluid - 20  
 Litre



**L300**  
 Magnetic Swarf Remover



**M9991**  
 Magnetic Floor Sweeper



**W343**  
 Roller Stand



**W343A**  
 Roller Stand



**W3434**  
 Roller Stand



**W3436**  
 Roller Stand - V-Type



**S093**  
 Screw Retaining



**S094**  
 Leadscrew Handle / Nut  
 Assembly



Product Brochure For S1062

S096  
 Vice Nut - Brass Type



S095  
 Dowel Pin



S097  
 Love Joy Coupling



S097A  
 Insert Love Joy



S098A  
 Coolant Pump



S098B  
 Coolant Pump & Conversion Kit



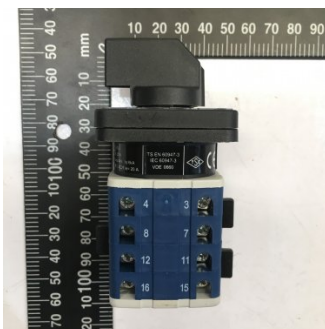
S099A  
 Return Spring Conversion Kit



S099B  
 Return Spring



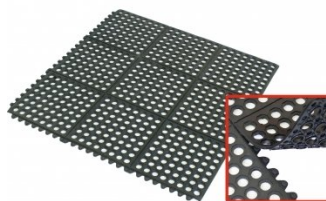
S098  
 ON/OFF SWITCH 240V



M800  
 Rubber Mat - Anti-Fatigue



M805  
 Rubber Mat - Anti-Fatigue



O000  
 SpillFix Universal Organic Absorbent



Product Brochure For S1062

O043  
 Rust & Corrosion Preventive



O042  
 General Purpose Lubricant & Corrosion Inhibitor



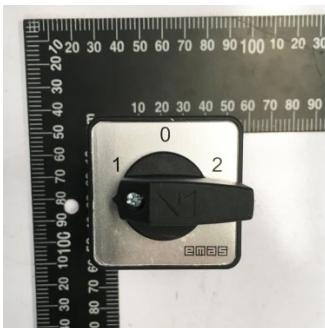
O040  
 Rust & Corrosion Preventive



O044  
 Rust & Corrosion Preventive



S088  
 HI / LO SWITCH - 2 SPEED  
 415V



S0052  
 Dowel Pin

