

Product Brochure For R836

Variable Speed Scroll Saw - SS16V

406mm (16") Throat Depth
 Includes Light & Dust Blower



ORDER CODE:	R836
MODEL:	SS16V
Throat Capacity (mm / inch):	406 / 16"
Speeds - Variable (m/min.):	Variable 550 - 1600
Motor Power (W):	75
Voltage (V):	240
Floor Space (W x D x H) (mm):	340 x 630 x 360
Nett Weight (kg):	16



Description

A real benefit of the Record Power SS16V is the variable speed which gives the versatility to cut a range of different materials. Slower speeds can be used for the cutting of plastic and non-ferrous metals, while faster speeds can be used for cutting wood up to 50mm thick. Importantly, the blade can be quickly and easily changed to minimise interruptions to workflow, particularly when cutting intricate pieces.

Features

- Tensioning System - Tensioning the blade is a simple procedure; by adjusting the tensioning knob at the rear of the machine, the correct tension for any kind of blade can be set with minimal effort.
- Adjustable Dust Blower & Safety Clamp - The built in dust blower automatically clears waste from the cutting area. This is an invaluable feature, ensuring optimum visibility while working. The hold down clamp eliminates risk of the workpiece being thrown upwards whilst the blade is moving, which greatly reduces the risk of material breakage as well as damage to fingers.
- Integral Work Light - The workpiece can be illuminated from any angle thanks to the support arm, to eliminate troublesome shadows and help achieve the most accurate cut.
- Ideal for Intricate Fretwork - Thanks to the smooth action of the blade and solid build quality, highly intricate and accurate work can be carried out without the nuisance of excess vibration.
- Tilting Table - The table tilts up to 45°, allowing for endless possibilities, from creating snug fitting veneers and intarsia work to the compound cutting techniques often used in model making.
- Smooth and Responsive Variable Speed - Blade speed is changed with ease using the conveniently placed control knob at the front of the machine.
- Dust Extraction Port - An easily accessible port at the front of the machine allows for removal of dust using a suitable extraction device.
- Universal Jaw System - The jaws will accept both pin and plain end blades.
- Includes a blade storage drawer.
- Throat Depth: 406mm (16")
- Uses pinned and unpinned blades
- Maximum Depth of Cut: 50mm
- Speeds: 550 - 1600m/min.
- Table Tilt: 0 - 45°

Product Brochure For R836

Specific Features



Blade Tension System



Adjustable Dust Blower and Safety Clamp



Integral Work Light



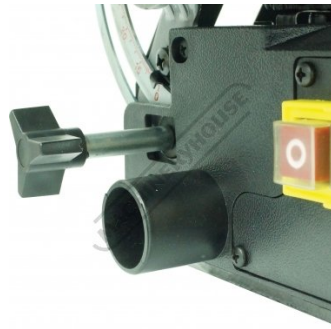
Intricate Fretwork Note guard removed for photo



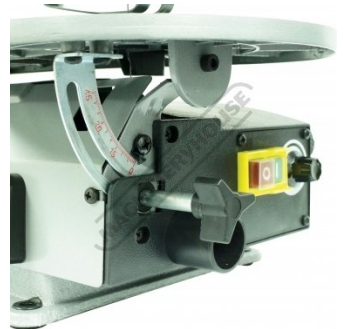
Tilting Table



Smooth and Responsive Variable Speed



Dust Extraction Port



Tilt Table Adjustment



Right View

Product Brochure For R836

Recommended Accessories

W810
 Universal Tool Stand



W354A
 Scroll Saw Blades



W354B
 Scroll Saw Blades



W354C
 Scroll Saw Blades



W354D
 Scroll Saw Blades



W354E
 Scroll Saw Blades



W355A
 Scroll Saw Blades



W355B
 Scroll Saw Blades



Product Brochure For R836

W355C
 Scroll Saw Blades

W355E
 Scroll Saw Blades

W356A
 Scroll Saw Blades

W356C
 Scroll Saw Blades

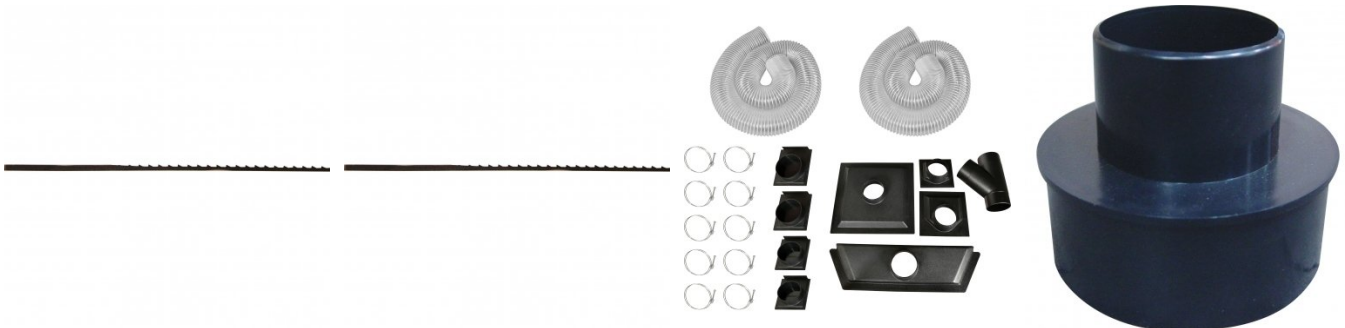


W356E
 Scroll Saw Blades

W356F
 Scroll Saw Blades

W344
 Wood Dust Accessory Kit

W334
 Dust Hose Reducer

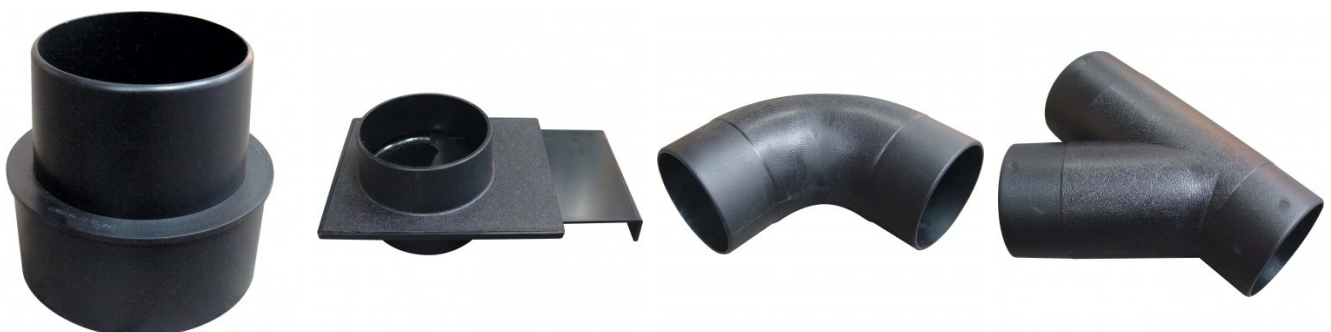


W333
 Dust Hose Reducer

W335
 Blast Gate

W336
 Dust Hose Elbow - 90 Degree

W337
 Dust Hose Y Adaptor



Product Brochure For R836

W338

Dust Hose Universal Dust Hood



W339

Dust Hose Floor Sweeper Attachment



W3405

Dust Hose Clamp



W334A

Dust Hose Stepped Reducer



W340

Dust Hose Clamp

