

Product Brochure For P406

## Industrial Hydraulic Press - 200 Tonne - HP-200T



ORDER CODE:	P406
MODEL:	HP-200T
Pressing Capacity (Tonne):	200
Hydraulic Ram Operation (Type):	Motorised System
Sliding Ram (left-right) (Yes / No):	No
Width Between Front Posts (mm):	1050
Width Between Side Posts (mm):	420
Table Top Opening - (Front to Back) (mm):	500
Ram To Table (Max.) (mm):	830
Cylinder Stroke (mm):	420
Ram Diameter (mm):	Ø160
Piston Diameter (mm):	~
Minimum Air Flow Rate required (L/Min):	~
Motor Power (kW / hp):	7.5 / 10
Voltage (V):	415
Floor Space (W x D x H) (mm):	1960 x 1110 x 2220
Nett Weight (kg):	2250



### Description

200 Tonne Industrial Hydraulic Press  
 Suited for the Industrial workshop, for pressing of bearings, bushings & straightening shafts, bending steel as well has all general pressing applications

### Features

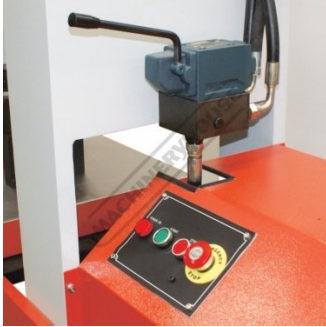
- Easy to use and powerful press for most applications
- Ideal for the repair of axles, shafts, & press fit of bearings & bushings
- Ram speed down 6.7mm/sec, returns 5.0mm/sec
- Heavy duty welded steel fabricated frame
- Strong hydraulic cylinder ensures precise pressing during operation
- Fitted with pressure gauge
- Safety overload valve
- Hydraulic joystick control lever
- Powerful TEFC motor
- Heavy duty one piece table plate insert
- Extra heavy duty table support with high tensile setting pins
- Table can be adjusted for height using chains and Hydraulic ram
- Pre-Commissioning:
  1. Press is run & tested prior delivery
  2. Hydraulic oil is included with machine

### Includes

- Includes support plate & V blocks

Product Brochure For P406

Specific Features



Controls



Control Panel



Hydraulic Ram

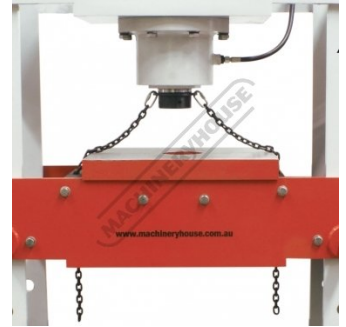
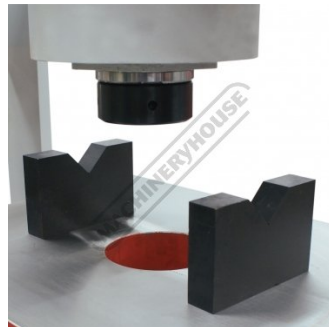


Table Lifting Chain



Lifting Parts For Table Height Adjustment



V Blocks On Table



Table Pins



Pin Safety Clip



Pressure Gauge



Isolation Switch

Product Brochure For P406

**Recommended Accessories**

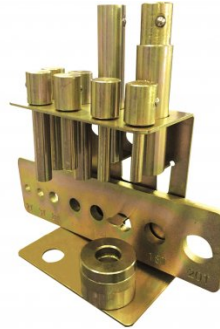
**P030**  
 Bush Driver Set - 17 piece



**P031**  
 Bearing Race & Seal Driver Set - 10 piece



**P1401**  
 Steel Press Pin Driver Set - 11 piece



**P455**  
 Pressbrake Attachment - Suits Hydraulic Presses



**O002**  
 Superdraulic ISO 46 Hi Temp Hydraulic Oil



**O004**  
 Superdraulic ISO 46 Hi Temp Hydraulic Oil

