

Product Brochure For M629D

Industrial Turret Milling Machine - BM-65VE

Table Travel: (X) - 925mm (Y) - 420mm (Z) - 480mm

Includes Digital Readout System



ORDER CODE:	M629D
MODEL:	BM-65VE
Digital Readout:	3-Axis Digital Readout
Type:	Vertical
Table Size (mm):	1500 x 300
Column Type:	~
Spindle Taper - Vertical:	NT40
Spindle Taper - Horizontal:	~
Longitudinal Travel (X-Axis) (mm):	925
Cross Travel (Y-Axis) (mm):	420
Vertical Travel (Z-Axis) (mm):	480
Type of Slides:	Dovetail (X), Square (Y & Z)
Ram Travel (mm):	485
Spindle to Table (mm):	530
Spindle to Base:	~
Spindle Travel / Diameter (mm):	155 / 105
Throat Depth (max.) (mm):	735
Tilting Head (Left ~ Right):	±90°
Tilting Head (Forward ~ Back):	±45°
Drilling Capacity (mm):	~
End Milling Capacity (mm):	~
Face Milling Capacity (mm):	~
Power Feed - Quill (mm/rev):	0.04 / 0.08 / 0.13
Power Feed - Longitudinal (X-Axis) (mm/min):	20 - 2000
Power Feed - Cross (Y-Axis) (mm/min):	20 - 2000
Power Feed - Vertical (Z-Axis) (mm/min):	Rapid
Table T-Slot Size (inch / mm):	5/8
Work Table Load Capacity (kg):	450
Spindle Speeds Vertical (No./ rpm):	Variable (60 - 3600)
Spindle Speeds Horizontal (No./ rpm):	~
Spindle Speeds - Universal Head:	~
Motor Power - Vertical Spindle (kW / hp):	3.75 / 5
Motor Power - Horizontal Spindle (kW / hp):	~
Motor Power - Universal Head:	~
Voltage / Amperage (V / amp):	415
Nett Weight (kg):	1750

Description

Manufactured in Taiwan

Features

- 3 Axis digital readout fitted
- 5HP 415V motor, dial variable speed system (BM-65VE)
- NT40 Spindle taper with a 105mm chrome & ground quill
- Hardened & ground work table & slide-ways
- Square construction slides for Y & Z-Axis to maximise rigidity
- Turcite B coated X & Y-Axis slide-ways reduces friction for smooth operation
- Pneumatic operation drawbar system for quick and effortless tool change
- Powered elevating motor for Z-Axis
- Meehanite casting for high strength & minimal deformation
- Quality electrics & overload protection in an easy access enclosure
- Horizontal travelling ram mounted on a rotating base allowing repositioning of spindle
- The ram incorporates a tail lug (spigot) to accept a slotting attachment etc.
- High / neutral and low gear selection lever to maximise torque

Product Brochure For M629D

- Align AL-500S X & Y-Axis power-feed with adjustable micro switch feed stops
- Micro switch on the manual knee handle for additional operator safety
- Metric dial graduations @ 0.02mm for X, Y & Z-Axis
- Automatic quill feed 0.04, 0.08, 0.13mm/rev
- Automatic cut off depth stop on quill
- Automatic oil lubrication pump and reservoir
- Slide-way covers Y & Z-Axis
- Mill head tilts to $\pm 45^\circ$ forward and back
- Mill head tilts to $\pm 90^\circ$ left and right
- Manual quick action quill lever
- Mechanical spindle brake
- Tool box and manual

Includes

- 3 Axis digital readout fitted
- Automatic oil lubrication pump and reservoir
- Pneumatic drawbar system M16 thread
- Coolant system
- Slideway covers
- Z axis powered elevating motor
- X & Y-Axis power-feed
- Halogen light
- Safety cutter guard
- Swarf tray

Specific Features



Y Axis Feed



Micro Switch on Knee Handle



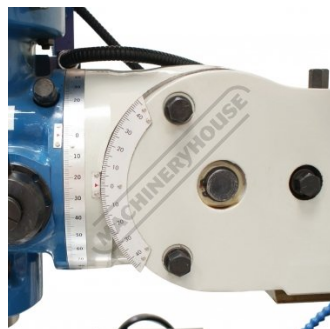
Mill Head Front View



Mill Head Right View



Pneumatic Drawbar



Universal Tilting and Rotating Head



Adjustable Swivel & Sliding Ram



X Axis Power Feed

Product Brochure For M629D



Metric dial graduations for X Y & Z Axis



Quill Feed Mechanism



Automatic Oil Lubrication Pump and Reservoir



Control Panel



3 Axis Digital Readout



Feed Selector



Variable Speed Range 60 3600rpm



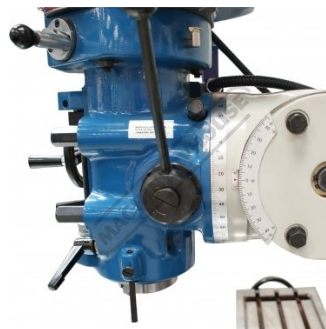
Forward Reverse Switch



Quill Feed Engagement Lever



Quill Feed Depth Stop



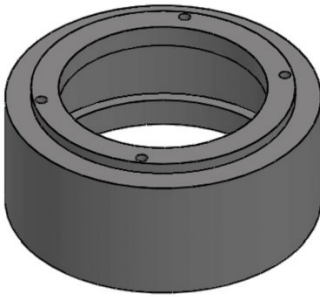
Head Side View

Product Brochure For M629D

Recommended Accessories

M223

Riser Spacer - Suits Turret Milling Machines



C091

Clamp Kit 58 piece - Workshop Series



C966

Collet & Chuck Set - 25 Piece



M3301

Metric HSS Slot Drill & End Mill Set - 10 Piece



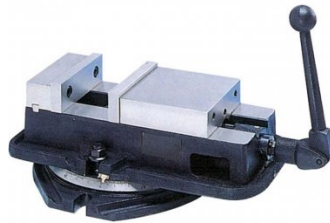
M3321

Imperial HSS Slot Drill & End Mill Set - 10 Piece



V306

Vertex Anglock Machine Vice



M184

Precision Boring Head



M185

Precision Universal Facing & Boring Head



Product Brochure For M629D

M197A
 Boring Head Shank



M181
 Boring Bar Set - 12 piece



M181A
 Boring Bar Set - 4 piece



C294
 Industrial Drill Chuck - Keyless Type



D448
 NT40 x JT3 Drill Chuck Arbor -
 M16 Threaded Shank



M252
 Parallel Set - 18 Piece



R008
 Vertex Rotary Table



R010
 Vertex Rotary Table



D002
 Vertex Dividing Head - Semi
 Universal



C2806
 3 Jaw Self Centring Lathe
 Chuck



R002
 Vertex Super Indexing Head



M512
 Face Mill 90° - Positive Rake



Product Brochure For M629D

M503
 Face Mill 90° - Positive Rake



M517
 Face Mill 45° - Super High-Rake



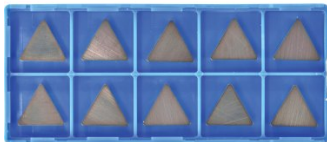
M518
 Face Mill 45° - Super High-Rake



L065
 KYOCERA Carbide Inserts - Milling



L066
 KYOCERA Carbide Inserts - Milling



M552
 Face Mill Arbor



M554
 Face Mill Arbor



M555
 Face Mill Arbor



M250
 Parallel Set - 8 Piece



L059
 Carbide Inserts - Milling



S090A
 Soluble Metal Cutting Fluid - 1 Litre



S090
 Soluble Metal Cutting Fluid - 5 Litre



Product Brochure For M629D

S076

Cutting Tool Lubricant Fluid - 500ml



S077

Drilling, Tapping & Cutting Tool Lubricant Spray - 400g



S075

Cutting Tool Lubricant Paste - 200g



S074

Cutting Tool Lubricant Paste - 500g



M247

Air Power Drawbar



M229

Power Feed Unit



M2295

Power Feed Unit



M225

Precision Slotting Head Attachment



L300

Magnetic Swarf Remover



M9991

Magnetic Floor Sweeper



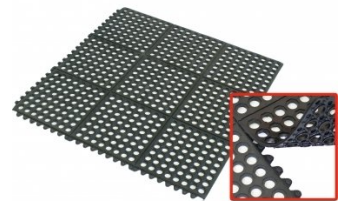
M800

Rubber Mat - Anti-Fatigue



M805

Rubber Mat - Anti-Fatigue



Product Brochure For M629D

O000

SpillFix Universal Organic Absorbent



O043

Rust & Corrosion Preventive



O042

General Purpose Lubricant & Corrosion Inhibitor



O040

Rust & Corrosion Preventive



O044

Rust & Corrosion Preventive

