

Product Brochure For M502

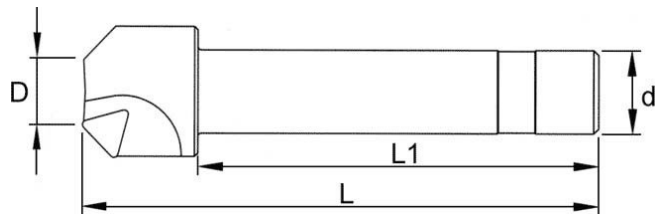
## Chamfer Cutter

Ø20 - Ø35mm Range  
 InsertS tip not included

**Ex GST**  
**\$80.00**

**Inc GST**  
**\$88.00**

ORDER CODE:	M502
Range (mm):	20 - 35
d (mm):	25
D (mm):	20
L (mm):	156
L1 (mm):	120
Number of Inserts (No.):	3
Suits Cutters:	TPMN1603 (L066)



### Description

NOTE: Inserts not included  
 Use insert TPMN1603 (L066)

### Features

- 45° high speed chamfer cutter.

Product Brochure For M502

---

**Recommended Accessories**

L066

KYOCERA Carbide Inserts -  
Milling

ML091

Cutter Part - Screw

ML092

Cutter Part - Insert Clamp

