

Product Brochure For M153

Mill Drill - Geared Head + Variable Speed - SIEG X3

Table Travel: (X) - 400mm (Y) - 150mm (Z) - 350mm

Dovetail Vertical Column



ORDER CODE:	M153
MODEL:	X3
Digital Readout:	Optional
Type:	Vertical
Table Size (mm):	550 x 160
Column Type:	Dovetail
Spindle Taper - Vertical:	3MT
Spindle Taper - Horizontal:	~
Longitudinal Travel (X-Axis) (mm):	400
Cross Travel (Y-Axis) (mm):	150
Vertical Travel (Z-Axis) (mm):	350
Type of Slides:	Dovetail
Ram Travel (mm):	~
Spindle to Table (mm):	400
Spindle to Base:	~
Spindle Travel / Diameter (mm):	82 / 60
Throat Depth (max.) (mm):	230
Tilting Head (Left ~ Right):	Fixed
Tilting Head (Forward ~ Back):	Fixed
Drilling Capacity (mm):	25
End Milling Capacity (mm):	25
Face Milling Capacity (mm):	50
Power Feed - Quill (mm/rev):	~
Power Feed - Longitudinal (X-Axis) (mm/min):	Optional
Power Feed - Cross (Y-Axis) (mm/min):	~
Power Feed - Vertical (Z-Axis) (mm/min):	~
Table T-Slot Size (inch / mm):	12
Work Table Load Capacity (kg):	35
Spindle Speeds Vertical (No./ rpm):	Variable (100 - 2000)
Spindle Speeds Horizontal (No./ rpm):	~
Spindle Speeds - Universal Head:	~
Motor Power - Vertical Spindle (kW / hp):	0.6 / 0.75
Motor Power - Horizontal Spindle (kW / hp):	~
Motor Power - Universal Head:	~
Voltage / Amperage (V / amp):	240 / 10
Nett Weight (kg):	178

Description

Excellent quality mill drill machine designed for the model engineer.

This X3 mill drill machine has a (High / Low) 2-speed gearbox drive system to maximise torque: 0-1000rpm and 100-2000rpm ideal for different types of material.

The X3 mill drill is powered by a 600W (0.75hp) electronic variable speed motor adjusted by a dial located on the side control panel.

Heavy duty cast iron body and base for better stability.

Precision machined work table.

Features

- Electronic variable speed system
- 2-speed gearbox (high/low) drive system to maximise torque
- All slides utilise dovetail construction for maximum rigidity
- Milling head is fixed at 90°
- Spindle lock for quill

Product Brochure For M153

- Metal gears in gearbox
- Ground work table with T-slots
- Metric dial graduations @ 0.02mm for X & Y axis
- Vertical dial graduations @ 0.01mm

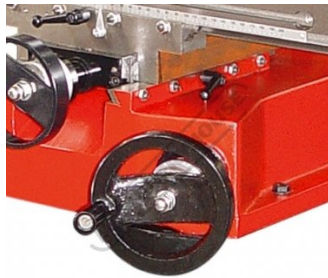
Includes

- Drill chuck
- 3MT arbor

Specific Features



Dovetail Column



Vertical Head Adjustment



Hi Low Gearbox



3MT Drill Chuck



Shown mounted to Optional Stand

Recommended Accessories

D695

3-Axis Optimum Digital Readout Counter - 1µm

D694

1500mm Optimum Magnetic Digital Readout Scale

C922B

Collet & Chuck Set - 8 Piece

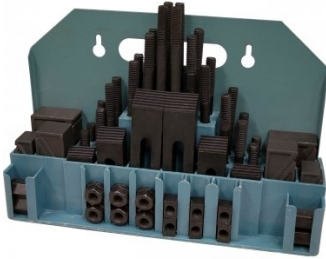
C926

Collet & Chuck Set - 20 Piece

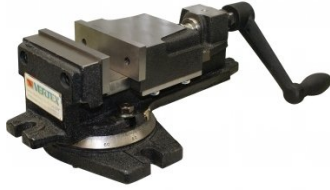


Product Brochure For M153

C0955
 Clamp Kit 58 piece - Workshop Series



V104
 Vertex K-Type Milling Vice



C085A
 Clamp Kit Tee Nuts



M3301
 Metric HSS Slot Drill & End Mill Set - 10 Piece



M3321
 Imperial HSS Slot Drill & End Mill Set - 10 Piece



M3280
 13mm HSS End Mill Long Series



M182
 Precision Boring Head Kit



M192
 Boring Head Shank



M180
 Boring Bar Set - 9 piece



M250
 Parallel Set - 8 Piece



M530
 Universal Milling Kit - 4 Piece



M562
 Face Mill Arbor



Product Brochure For M153

M515
 Face Mill 45° - Super High-Rake



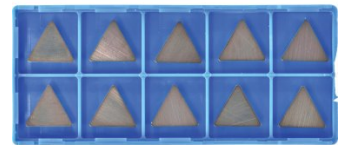
L065
 KYOCERA Carbide Inserts - Milling



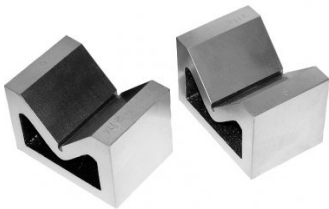
M528
 Face Mill 90° - Positive Rake



L066
 KYOCERA Carbide Inserts - Milling



V004
 Cast Iron Vee Block



R001
 Rotary Table



R0014
 Tilting Rotary Table



P235
 Coolant Pump & Tank



S090A
 Soluble Metal Cutting Fluid - 1 Litre



S090
 Soluble Metal Cutting Fluid - 5 Litre



S076
 Cutting Tool Lubricant Fluid - 500ml



S077
 Drilling, Tapping & Cutting Tool Lubricant Spray - 400g



Product Brochure For M153

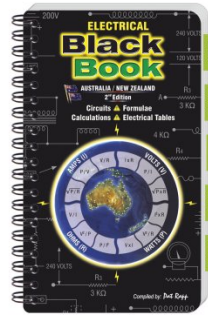
S075
 Cutting Tool Lubricant Paste -
 200g



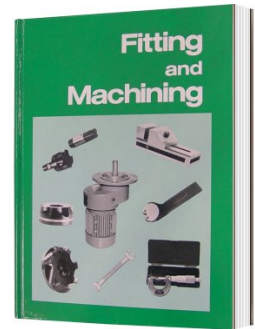
S074
 Cutting Tool Lubricant Paste -
 500g



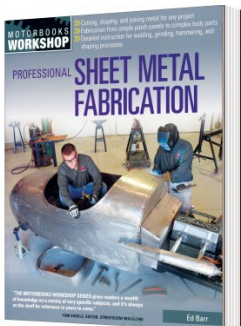
L342
 Electrical Black Book



L341
 Fitting and Machining Technical
 Book



L3455
 Professional Sheet Metal
 Fabrication Book



L300
 Magnetic Swarf Remover



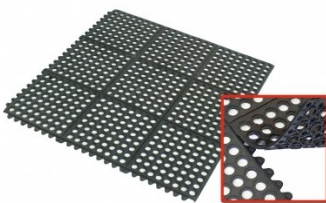
M9991
 Magnetic Floor Sweeper



M800
 Rubber Mat - Anti-Fatigue



M805
 Rubber Mat - Anti-Fatigue



O000
 SpillFix Universal Organic
 Absorbent



O043
 Rust & Corrosion Preventive



O042
 General Purpose Lubricant &
 Corrosion Inhibitor



Product Brochure For M153

O040

Rust & Corrosion Preventive

O044

Rust & Corrosion Preventive

