

Product Brochure For M150A

## Mini Mill Drill - Tilting Head - HM-10L (SIEG X2L)

Table Travel: (X) - 300mm (Y) - 130mm (Z) - 180mm

Dovetail Vertical Column



ORDER CODE:	M150A
MODEL:	HM-10L (X2L)
Digital Readout:	Optional
Type:	Vertical
Table Size (mm):	460 x 120
Column Type:	Dovetail
Spindle Taper - Vertical:	3MT
Spindle Taper - Horizontal:	~
Longitudinal Travel (X-Axis) (mm):	300
Cross Travel (Y-Axis) (mm):	130
Vertical Travel (Z-Axis) (mm):	180
Type of Slides:	Dovetail
Ram Travel (mm):	~
Spindle to Table (mm):	280
Spindle to Base:	~
Spindle Travel / Diameter (mm):	Fixed
Throat Depth (max.) (mm):	160
Tilting Head (Left ~ Right):	±45°
Tilting Head (Forward ~ Back):	Fixed
Drilling Capacity (mm):	13
End Milling Capacity (mm):	16
Face Milling Capacity (mm):	30
Power Feed - Quill (mm/rev):	~
Power Feed - Longitudinal (X-Axis) (mm/min):	~
Power Feed - Cross (Y-Axis) (mm/min):	~
Power Feed - Vertical (Z-Axis) (mm/min):	~
Table T-Slot Size (inch / mm):	12
Work Table Load Capacity (kg):	25
Spindle Speeds Vertical (No./ rpm):	Variable (100 - 2500)
Spindle Speeds Horizontal (No./ rpm):	~
Spindle Speeds - Universal Head:	~
Motor Power - Vertical Spindle (kW / hp):	0.35 / 0.5
Motor Power - Horizontal Spindle (kW / hp):	~
Motor Power - Universal Head:	~
Voltage / Amperage (V / amp):	240 / 10
Nett Weight (kg):	78

### Description

Excellent quality mini mill drill machine designed for the model engineer

### Features

- The HM-10L mini mill drill is powered by a 350W (1/2hp) electronic variable speed motor
- Mill head tilts to ±45° both directions
- Heavy duty cast iron body and base for better stability
- All slides utilise dovetail construction for maximum rigidity
- Precision machined work table
- 2-speed gearbox (high/low) drive system to maximise torque
- Ground work table with T-slots
- Concertina slide-way covers
- Spring assisting milling head return
- Vertical micro feed dial 0.025mm
- Metric dial graduations 0.02mm

### Includes

- 13mm keyed drill chuck

Product Brochure For M150A

- 3MT Arbor
- Set of spanners to suit
- Safety cutter guard

**Specific Features**



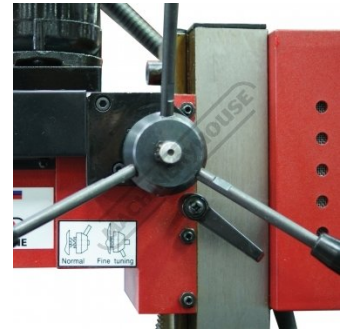
Electronic variable speed system



Switch Box



Head Right View



9 Quill Handle



Head Controls



Head Left View



Chuck Guard



Fine Adjustment Dial



Low High Speed Lever



Vertical Height reading



Milling head Tilts 45 Degrees both directions



Sliding Lock



Milling table

Product Brochure For M150A

**Recommended Accessories**

**T773**  
 Industrial Mobile Tooling  
 Cabinet Workstation



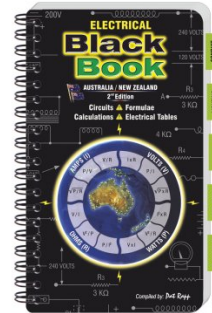
**L300**  
 Magnetic Swarf Remover



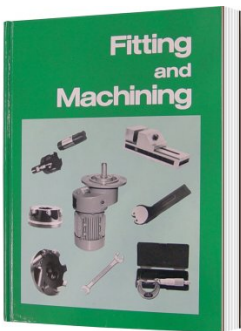
**M9991**  
 Magnetic Floor Sweeper



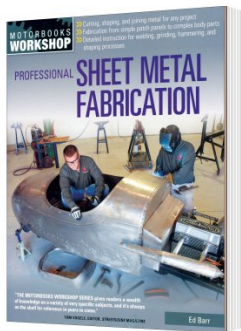
**L342**  
 Electrical Black Book



**L341**  
 Fitting and Machining Technical  
 Book



**L3455**  
 Professional Sheet Metal  
 Fabrication Book



**C926**  
 Collet & Chuck Set - 20 Piece



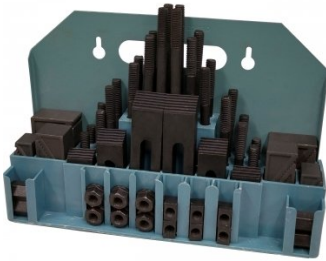
**C922B**  
 Collet & Chuck Set - 8 Piece



Product Brochure For M150A

**C0955**

Clamp Kit 58 piece - Workshop Series



**V104**

Vertex K-Type Milling Vice



**M3301**

Metric HSS Slot Drill & End Mill Set - 10 Piece



**M3321**

Imperial HSS Slot Drill & End Mill Set - 10 Piece



**M3280**

13mm HSS End Mill Long Series



**M182**

Precision Boring Head Kit



**M192**

Boring Head Shank



**M180**

Boring Bar Set - 9 piece



**M250**

Parallel Set - 8 Piece



**M530**

Universal Milling Kit - 4 Piece



**M528**

Face Mill 90° - Positive Rake



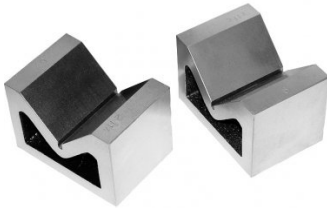
**L066**

KYOCERA Carbide Inserts - Milling



Product Brochure For M150A

V004  
 Cast Iron Vee Block



R001  
 Rotary Table



R0014  
 Tilting Rotary Table



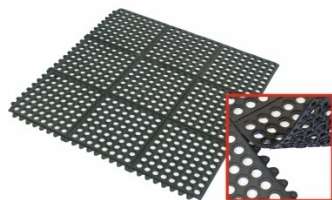
P235  
 Coolant Pump & Tank



M800  
 Rubber Mat - Anti-Fatigue



M805  
 Rubber Mat - Anti-Fatigue



S090A  
 Soluble Metal Cutting Fluid - 1  
 Litre



S090  
 Soluble Metal Cutting Fluid - 5  
 Litre



S076  
 Cutting Tool Lubricant Fluid -  
 500ml



S077  
 Drilling, Tapping & Cutting Tool  
 Lubricant Spray - 400g



S075  
 Cutting Tool Lubricant Paste -  
 200g



S074  
 Cutting Tool Lubricant Paste -  
 500g



Product Brochure For M150A

O000

SpillFix Universal Organic Absorbent



O043

Rust & Corrosion Preventive



O042

General Purpose Lubricant & Corrosion Inhibitor



O040

Rust & Corrosion Preventive



O044

Rust & Corrosion Preventive

