

## Product Brochure For M137

### Mill Drill - Belt Drive - HM-32B

Table Travel: (X) - 540mm (Y) - 235mm (Z) - 310mm



**Ex GST**  
**\$2,250.00**

**Inc GST**  
**\$2,475.00**

ORDER CODE:	M137
MODEL:	HM-32B
Digital Readout:	Optional
Type:	Vertical
Table Size (mm):	820 x 240
Column Type:	Ø115mm
Spindle Taper - Vertical:	3MT
Spindle Taper - Horizontal:	~
Longitudinal Travel (X-Axis) (mm):	540
Cross Travel (Y-Axis) (mm):	235
Vertical Travel (Z-Axis) (mm):	310
Type of Slides:	Dovetail
Ram Travel (mm):	~
Spindle to Table (mm):	465
Spindle to Base:	~
Spindle Travel / Diameter (mm):	130 / 75
Throat Depth (max.) (mm):	202
Tilting Head (Left ~ Right):	Fixed
Tilting Head (Forward ~ Back):	Fixed
Drilling Capacity (mm):	31.5
End Milling Capacity (mm):	22
Face Milling Capacity (mm):	80
Power Feed - Quill (mm/rev):	~
Power Feed - Longitudinal (X-Axis) (mm/min):	Optional
Power Feed - Cross (Y-Axis) (mm/min):	~
Power Feed - Vertical (Z-Axis) (mm/min):	~
Table T-Slot Size (inch / mm):	14
Work Table Load Capacity (kg):	55
Spindle Speeds Vertical (No./ rpm):	12 (100 - 2080)
Spindle Speeds Horizontal (No./ rpm):	~
Spindle Speeds - Universal Head:	~
Motor Power - Vertical Spindle (kW / hp):	1.5 / 2
Motor Power - Horizontal Spindle (kW / hp):	~
Motor Power - Universal Head:	~
Voltage / Amperage (V / amp):	240 / 10
Nett Weight (kg):	310

### Description

This new model HM-32B is a rugged and well made machine with good capacities and plenty of power, a good choice for a serious home engineer.

The belt driven head provides a useful range of 12 speeds, 100-2080rpm and is quiet in operation, the head can be re-positioned on the column with the aid of a handle driven rack and pinion drive.

The table has T slots to allow the work to be directly mounting to table, or in a milling vice, with two large diameter control hand wheels with metric calibrations for the longitudinal axis.

The fine downfeed control can be locked firmly in position when milling and the mill also features an easy-to-read depth stop.

Optional power feed provides smooth variable speed drive to longitudinal travel

### Features

- Quiet B section belt drive system
- Milling head rotates 360° on column

## Product Brochure For M137

- Extra large 820 x 240mm ground work table with T-slots
- Adjustable leadscrew nuts eliminating backlash on both axis
- Fine feed hand wheel operating quill feed
- Forward and reverse on/off switch with emergency stop
- 3MT spindle with 75mm diameter quill
- Adjustable table and drill length stops
- Rack and pinion wind-up head
- Rear slide-way cover and slide clamps on all axis
- Spindle lock for quill
- Table locks on both axis
- Metric dial graduations @ 0.05mm for X & Y axis

### Includes

- Drill chuck & arbor
- 3MT-2MT drill sleeve
- Face cutter & arbor
- Interlocked spindle safety guard
- 1/2" x 12tpi whitworth drawbar
- M12 x 1.75mm metric drawbar

### Optional Accessories

- Machine stand (M135)
- Power feed X-Axis (M230)
- Transformer to suit power feed (M240)

### Specific Features



Mill Head



Spindle Power Controls



Quill Handle



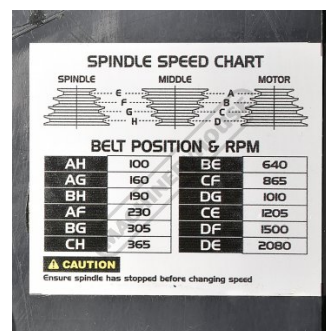
Fine Feed Handle



Rack-Pinion Wind Up Head



Belt Drive



Spindle Speed Chart



Interlocked Spindle Safety Guard

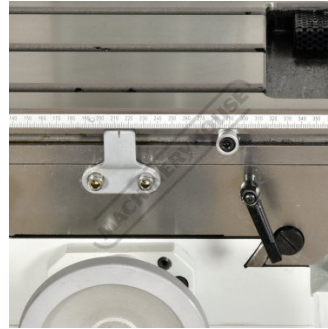
Product Brochure For M137



Ø45mm MT3 Face Mill Cutter



Work Table



Adjustable Length Stops



Rear Slide Cover

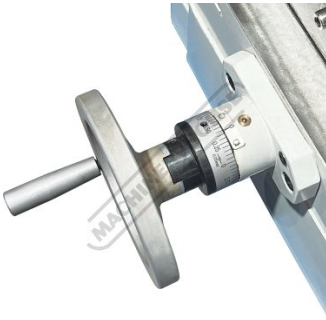


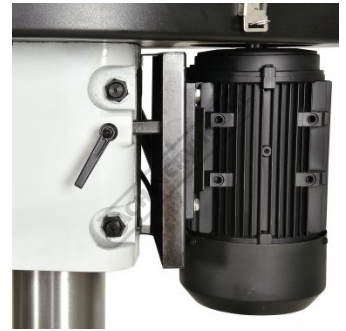
Table Cross Feed Handle



Table Longitudinal Handle



Coolant Hose Connection



Motor & Belt Tension Adjustment



Motor Drive Rear View



Right Side View



Left Side View



Left View



Front View



Shown With Optional Stand M135A

Product Brochure For M137

**Recommended Accessories**

**M135**  
Mill Drill Stand



**D695**  
3-Axis Optimum Digital Readout Counter - 1µm



**D694**  
1500mm Optimum Magnetic Digital Readout Scale



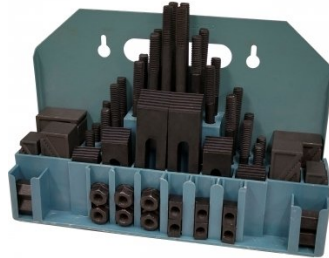
**M230**  
Power Feed Unit



**M240**  
Transformer



**C0965**  
Clamp Kit 58 piece - Workshop Series



**K150**  
Mill-Drill Accessory Package Deal - Imperial Cutters



**K151**  
Mill-Drill Accessory Package Deal - Metric Cutters



Product Brochure For M137

**C922B**  
 Collet & Chuck Set - 8 Piece



**C926**  
 Collet & Chuck Set - 20 Piece



**M3301**  
 Metric HSS Slot Drill & End Mill Set - 10 Piece



**M3321**  
 Imperial HSS Slot Drill & End Mill Set - 10 Piece



**M3280**  
 13mm HSS End Mill Long Series



**M182**  
 Precision Boring Head Kit



**M192**  
 Boring Head Shank



**M180**  
 Boring Bar Set - 9 piece



**M250**  
 Parallel Set - 8 Piece



**M530**  
 Universal Milling Kit - 4 Piece



**M562**  
 Face Mill Arbor



**M515**  
 Face Mill 45° - Super High-Rake



Product Brochure For M137

**L065**  
 KYOCERA Carbide Inserts -  
 Milling



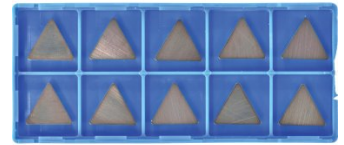
**M528**  
 Face Mill 90° - Positive Rake



**M529**  
 Face Mill 90° - Positive Rake



**L066**  
 KYOCERA Carbide Inserts -  
 Milling



**D1171**  
 Metric Industrial HSS Reduced  
 Shank Drill Set



**D1181**  
 Imperial Industrial HSS Reduced  
 Shank Drill Set



**D117**  
 Metric HSS Reduced Shank Drill  
 Set



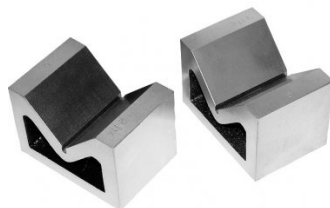
**D119**  
 Metric 2MT HSS Drill Set



**D122**  
 Metric Precision 2MT Morse  
 Taper Drill Set - 10 Piece



**V004**  
 Cast Iron Vee Block



**V105**  
 Vertex K-Type Milling Vice



**R006**  
 Vertex Rotary Table



Product Brochure For M137

**P235**  
Coolant Pump & Tank



**S090A**  
Soluble Metal Cutting Fluid - 1 Litre



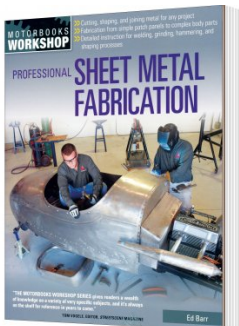
**S090**  
Soluble Metal Cutting Fluid - 5 Litre



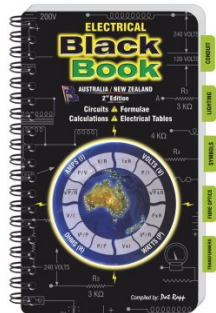
**L341**  
Fitting and Machining Technical Book



**L3455**  
Professional Sheet Metal Fabrication Book



**L342**  
Electrical Black Book



**L300**  
Magnetic Swarf Remover



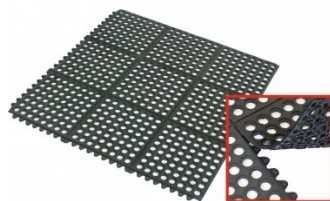
**M9991**  
Magnetic Floor Sweeper



**M800**  
Rubber Mat - Anti-Fatigue



**M805**  
Rubber Mat - Anti-Fatigue



**O000**  
SpillFix Universal Organic Absorbent



**O043**  
Rust & Corrosion Preventive



Product Brochure For M137

O042

General Purpose Lubricant & Corrosion Inhibitor



O040

Rust & Corrosion Preventive



O044

Rust & Corrosion Preventive

