

Product Brochure For M122

## Mill Drill - Geared & Tilting Head - HM-36

Table Travel: (X) - 475mm (Y) - 195mm (Z) - 450mm



ORDER CODE:	M122
MODEL:	HM-36
Digital Readout:	Optional
Type:	Vertical
Table Size (mm):	730 x 210
Column Type:	Ø115mm
Spindle Taper - Vertical:	3MT
Spindle Taper - Horizontal:	~
Longitudinal Travel (X-Axis) (mm):	475
Cross Travel (Y-Axis) (mm):	195
Vertical Travel (Z-Axis) (mm):	450
Type of Slides:	Dovetail
Ram Travel (mm):	~
Spindle to Table (mm):	510
Spindle to Base:	~
Spindle Travel / Diameter (mm):	120 / 75
Throat Depth (max.) (mm):	272
Tilting Head (Left ~ Right):	±90°
Tilting Head (Forward ~ Back):	Fixed
Drilling Capacity (mm):	31.5
End Milling Capacity (mm):	28
Face Milling Capacity (mm):	80
Power Feed - Quill (mm/rev):	~
Power Feed - Longitudinal (X-Axis) (mm/min):	Optional
Power Feed - Cross (Y-Axis) (mm/min):	~
Power Feed - Vertical (Z-Axis) (mm/min):	~
Table T-Slot Size (inch / mm):	14
Work Table Load Capacity (kg):	55
Spindle Speeds Vertical (No./ rpm):	6 (95 - 1600)
Spindle Speeds Horizontal (No./ rpm):	~
Spindle Speeds - Universal Head:	~
Motor Power - Vertical Spindle (kW / hp):	1.1 / 1.5
Motor Power - Horizontal Spindle (kW / hp):	~
Motor Power - Universal Head:	~
Voltage / Amperage (V / amp):	240 / 10
Nett Weight (kg):	293

### Description

The HM-36 milling machines is similar in overall size to the popular RF31 but with the additional benefit of a 6-speed 95-1600rpm, gear driven head which can be tilted up to 90° either side of the vertical. This feature allows the head to be positioned in a variety of positions, allowing a whole range of milling, slotting, grooving, drilling and boring operations to be carried out.

The usual handle-driven down feed is available for precision drilling and there is a fine manual down-feed control for precise vertical milling.

The motor is controlled by a standard forward and reverse on/off switch.

There is a heavy duty steel stand available as an extra, strongly recommended bearing in mind the weight of the machine.

Also available is a optional power feed attachment which fits to the left hand end of the table and provides a smooth, variable speed longitudinal drive.

### Features

- Gear driven head 6 speeds
- Tilting head to ±90° from vertical
- Milling head rotates 360° on column
- Extra large 730 x 210mm ground work table with T-slots

## Product Brochure For M122

- Adjustable leadscrew nuts eliminating backlash on both axis
- Fine feed hand wheel operating quill feed
- Forward and reverse on/off switch
- 3MT spindle with 75mm diameter quill
- Adjustable table and drill length stops
- Rack and pinion wind-up head
- Rear slide-way cover and slide clamps on all axis
- Spindle lock for quill
- Table lock on both axis
- Metric dial graduations @ 0.05mm for X & Y axis

### Includes

- Drill chuck
- 3MT arbor
- 3MT-2MT drill sleeve
- Face cutter & arbor
- Safety cutter guard

### Specific Features



Forward-Reverse & On Off Switch



Fine feed handwheel operating quill feed



Quill Depth Scale



Spindle Speed Selectors

SPINDLE SPEEDS (r/min)			
	I-L	I-M	I-H
50Hz	95	170	280
60Hz	120	210	340
	II-L	II-M	II-H
50Hz	540	960	1600
60Hz	670	1180	1970

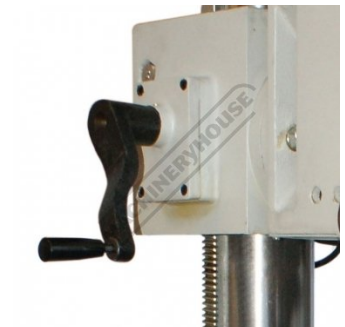
Speed Chart



Spindle lock for quill



Face Mill Cutter



Rack and pinion wind up head



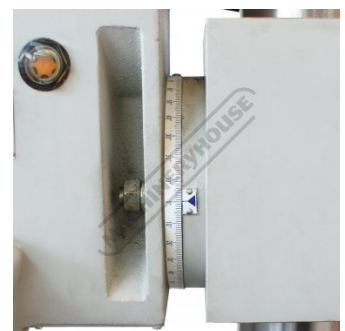
Extra large 730mm x 210mm ground work table with T slots



Head Controls



Geared Head



Tilting head to 90 Degrees from vertical

Product Brochure For M122



Tilting Head



Right View



Table Cross Feed Handle



Table Longitudinal Handle



Drawbar



Includes These Accessories



Show mounted to Optional Stand

**Recommended Accessories**

M230  
 Power Feed Unit

M240  
 Transformer

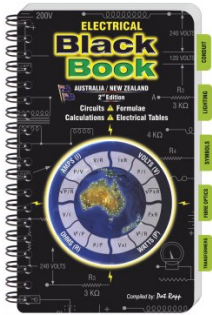
L300  
 Magnetic Swarf Remover

M9991  
 Magnetic Floor Sweeper

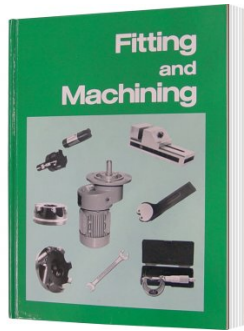


Product Brochure For M122

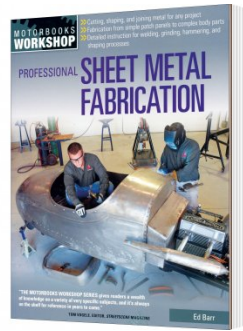
L342  
 Electrical Black Book



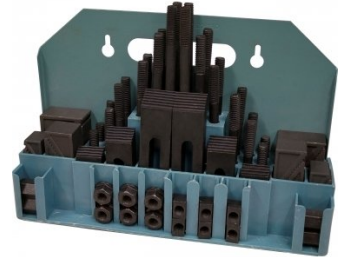
L341  
 Fitting and Machining Technical Book



L3455  
 Professional Sheet Metal Fabrication Book



C0965  
 Clamp Kit 58 piece - Workshop Series



C926  
 Collet & Chuck Set - 20 Piece



C922B  
 Collet & Chuck Set - 8 Piece



M3301  
 Metric HSS Slot Drill & End Mill Set - 10 Piece



M3321  
 Imperial HSS Slot Drill & End Mill Set - 10 Piece



M3280  
 13mm HSS End Mill Long Series



M182  
 Precision Boring Head Kit



M192  
 Boring Head Shank



M180  
 Boring Bar Set - 9 piece



Product Brochure For M122

**M250**  
 Parallel Set - 8 Piece



**M530**  
 Universal Milling Kit - 4 Piece



**M562**  
 Face Mill Arbor



**M515**  
 Face Mill 45° - Super High-Rake



**L065**  
 KYOCERA Carbide Inserts -  
 Milling



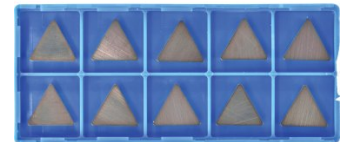
**M528**  
 Face Mill 90° - Positive Rake



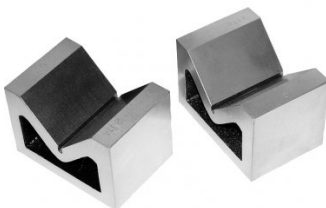
**M529**  
 Face Mill 90° - Positive Rake



**L066**  
 KYOCERA Carbide Inserts -  
 Milling



**V004**  
 Cast Iron Vee Block



**V105**  
 Vertex K-Type Milling Vice



**R006**  
 Vertex Rotary Table



**P235**  
 Coolant Pump & Tank

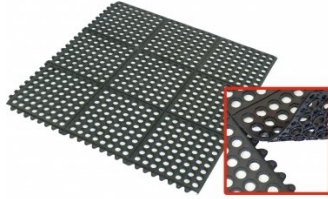


Product Brochure For M122

**M800**  
 Rubber Mat - Anti-Fatigue



**M805**  
 Rubber Mat - Anti-Fatigue



**S090A**  
 Soluble Metal Cutting Fluid - 1  
 Litre



**S090**  
 Soluble Metal Cutting Fluid - 5  
 Litre



**S076**  
 Cutting Tool Lubricant Fluid -  
 500ml



**S077**  
 Drilling, Tapping & Cutting Tool  
 Lubricant Spray - 400g



**S075**  
 Cutting Tool Lubricant Paste -  
 200g



**S074**  
 Cutting Tool Lubricant Paste -  
 500g



**O000**  
 SpillFix Universal Organic  
 Absorbent



**O043**  
 Rust & Corrosion Preventive



**O042**  
 General Purpose Lubricant &  
 Corrosion Inhibitor



**O040**  
 Rust & Corrosion Preventive



## Product Brochure For M122

---

O044

Rust & Corrosion Preventive

