

Product Brochure For M0020

Slim Rechargeable LED Handheld Work Light - 03.5612XX

Ultra-Thin 3-in-1 Inspection Light
 Up To 500 Lumens



ORDER CODE:	M0020
MODEL:	03.5612XX
Type:	LED Work Light, Flip Over & Arm & Magnetic Base
Size (mm):	~
Light - Watts / Lumens / Kelvins (W / L / K):	4 / 500
Power (W):	~
Voltage / Amperage (V / amp):	5 / ~
Built-in Transformer (Yes / No):	~
Magnetic Base (Yes / No):	Yes
Charging Cable Type (metre):	~
Colour Temperature (K):	~
Nett Weight (kg):	0.228



Description

SLIM - Compact 3-in-1 light for those challenging inspection jobs

The new SLIM is truly the swiss army knife of work lights. With its ultra-thin, compact design (ø9mm) the SLIM allows for inspection in even the most inaccessible and narrow work areas. This makes the work light ideal for very demanding and difficult inspection jobs.

Designed with a 100% foldable body, when fully folded the lamp can be used as a traditional hand-held work light. In folded position, the SLIM is reduced to pocket size - compact and portable to take with you everywhere.

As a unique feature, which has never been seen before, SLIM can be used as flashlight when the lamp is folded, providing a powerful flashlight with a handy, firm grip.

FIVE BENEFITS BY SLIM:

- 3-in-1: inspection light, work light and flashlight in one lamp
- Extremely powerful illumination up to 500 lumens with flashlight function
- Rechargeable with up to 5h operating time
- Choose between 2 light settings (50% or 100%) for maximized operating time
- Strong built-in magnet and hook for flexible positioning

Features

- Details
- Product types Hand Lamp
- Net Weight 0.22kg
- Length 165mm
- Width 44mm
- Height 28mm
- In the box Lamp, Charge cable & Manual
- Secondary Light
- Luminous Flux, Max 100 Lumen
- Illuminance, Max 4800 Lux
- Beam Angle 25°
- CRI >80
- CCT 6000
- Light Source Secondary High power LED

Product Brochure For M0020

- Illuminance Distance 0.50 metre
- Main Light
- Light Source COB LED
- Luminous Flux, Max 500 Lumen
- Luminous Flux, Min 250 Lumen
- Illuminance, Max 800 Lux
- Illuminance, Min 400 Lux
- Illuminance Distance 0.50 Metre
- CRI Ra >80
- CCT 6000 Kelvin
- Adjustable Light Output 2 levels
- Beam Angle Main 120°
- Electrical
- Power source Rechargeable Battery
- Battery type Li-ion
- Battery capacity 2800mAh
- Battery voltage 3.80V
- Cable 1 m USB to mini DC
- Charging voltage DC 5V
- Charging current 1.00A
- Charging input voltage 100-240V AC 50/60Hz
- Max Power Consumption 4W
- Operation
- Operating time, up to 5 hours
- Charging time 4.50 hours
- Ingress protection IP30
- Operating temperature -10 °C to +40 °C
- Impact resistance 1.00 metre

Specific Features



Main Light Front View



Swivel Light Arm



Magnetic Base & Hook Attachment



Folded Light Arm



Folded Light Arm



Folded Light Arm



Folded Light Arm



Slim Hand Light

Product Brochure For M0020



9mm LED Spot Light



Shown Folded in Hand



Shown Arm Extended in Hand



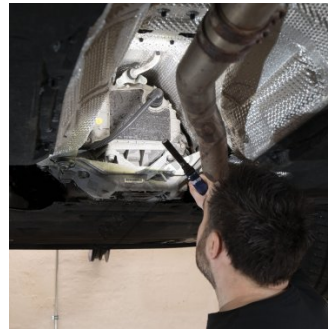
Multiple Angle



USB Charging Cable



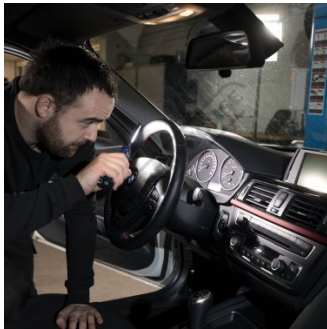
LED Light And Charger



Shown in Use - Automotive Industry



Shown in Use - Automotive Industry



Shown in Use - Automotive Industry