

Product Brochure For L103

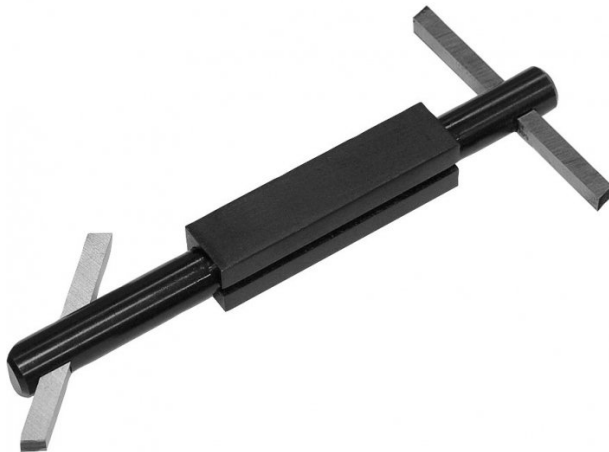
Boring Bar with Holder

5/16"

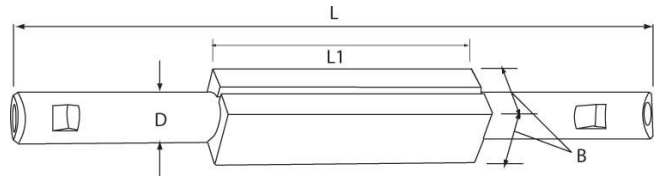
HSS bit not included

Ex GST  
**\$35.00**

Inc GST  
**\$38.50**



ORDER CODE:	L103
B:	1"
D:	3/4"
L:	9"
L1:	3-3/4"
Toolbit Required:	5/16" (L0004)
Nett Weight (kg):	0.55



**Description**

NOTE: HSS Tool bits not supplies  
 Use 5/16" HSS Tool Bit (L0004)

**Features**

- Double-ended bars with 45° and 90° angular square holes at either end
- Accurately broached square holes to accept standard high speed steel or carbide tool bits
- Supplied fitted with screws and allen key

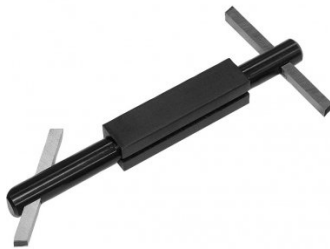
Product Brochure For L103

**Recommended Accessories**

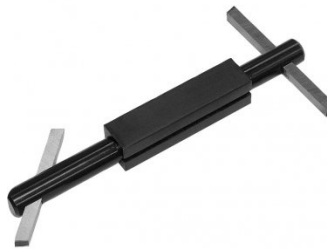
**L0004**  
 High Speed Steel Bits - Pack of 3



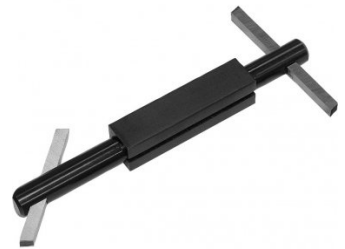
**L100**  
 Boring Bar with Holder



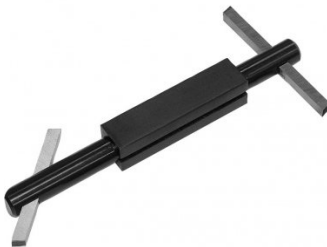
**L101**  
 Boring Bar with Holder



**L102**  
 Boring Bar with Holder



**L104**  
 Boring Bar with Holder



**L006A**  
 Boring Bar Set - HSS



**L431**  
 Boring Bar Set - Carbide Insert



**L430**  
 Boring Bar Set - Carbide Insert



Product Brochure For L103

---

**L073**

Parting Tool Holder - Suits 1/2"  
HSS Tool Bit



**L074**

Parting Tool Holder - Suits 1/2"  
HSS Tool Bit



**L070L**

Left Hand Lathe Turning Tool  
Holder - American Style



**L070R**

Right Hand Lathe Turning Tool  
Holder - American Style



**L070S**

Straight Lathe Turning Tool  
Holder - American Style

