

Product Brochure For L075R

Right Hand Lathe Turning Tool Holder - English Style

16 x 19mm

HSS bit not included

ORDER CODE:	L075R
Hand Type:	Right
Style:	English (Drop Head)
Centre Height Min. - Max. (mm):	6 - 11
Shank Size (W x H) (inch / mm):	5/8 x 3/4" / 16 x 19
Overall Length (inch / mm):	7 1/2" / 190
Tool Bit Capacity (inch / mm):	1/4" / 6.3
Nett Weight (kg):	0.72



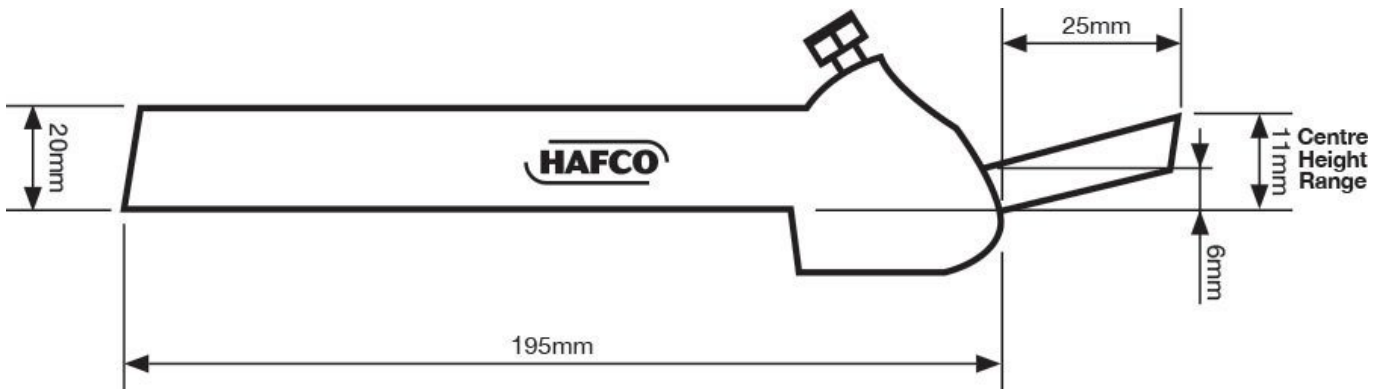
Description

Right Hand TURNING TOOL HOLDER
 For HSS Tool Bits
 English Style - to suit 1/4" Tool Steel (Drop Head)

NOTE: HSS Tool bits not supplied
 Uses Tool Bit L0003

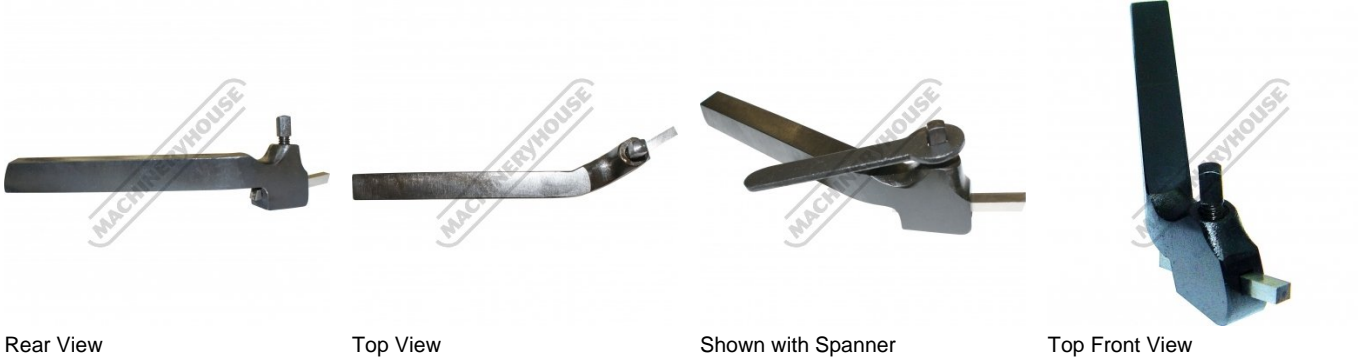
Features

- Manufactured from high grade steel
- Case-hardened and ground
- Supplied with wrench, but without tool bit
- Available in straight (S), right (R) and left (L) hand shanks



Product Brochure For L075R

Specific Features



Recommended Accessories

L0003
 High Speed Steel Bits - Pack of 3

L070L
 Left Hand Lathe Turning Tool Holder - American Style

L070R
 Right Hand Lathe Turning Tool Holder - American Style

L070S
 Straight Lathe Turning Tool Holder - American Style



L073
 Parting Tool Holder - Suits 1/2" HSS Tool Bit

L074
 Parting Tool Holder - Suits 1/2" HSS Tool Bit

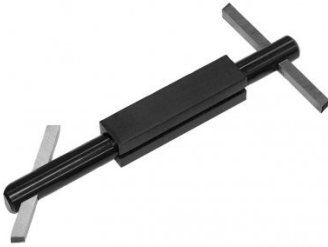
L100
 Boring Bar with Holder

L101
 Boring Bar with Holder



Product Brochure For L075R

L102
Boring Bar with Holder



L103
Boring Bar with Holder



L104
Boring Bar with Holder



L006A
Boring Bar Set - HSS



L431
Boring Bar Set - Carbide Insert



L430
Boring Bar Set - Carbide Insert

