

Product Brochure For L053

KYOCERA Carbide Inserts - Turning - WNMG 080408PMG

Grade CA125P - General Purpose Steel
 10 Inserts Per Pack

Ex GST
\$130.00

Inc GST
\$143.00

ORDER CODE:	L053
MODEL:	WNMG 080408PS
Grade:	CA125P
Application:	General Purpose Steel
Pieces in Set (Qty):	10
[D] Insert IC Size (Inscribed Circle) (mm):	8.7
[D1] Insert Hole Size (mm):	5.16
[L10] Insert Cutting Edge Length (mm):	~
[S] Insert Thickness (mm):	4.76
[R?] Corner Radius (mm):	0.8
Relief Angle (Deg):	~
d (mm):	12.7
Insert shape (Style):	~



KYOCERA
 JAPANESE CARBIDE



Description

CA125P Grade CVD Coated Carbide for Steel
 Suitable for continuous to heavy interrupted machining, these inserts are designed for general-purpose applications.

PMG Chipbreaker

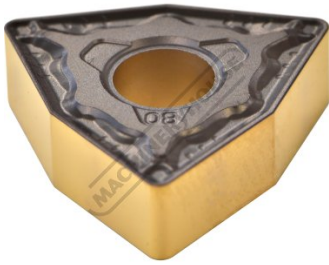
Covers a wide range of machining applications from medium machining to roughing.
 Excellent wear resistance with low cutting force design. Reduces chip shape inconsistencies and improves tool life.

Features

- Japanese Made
- CVD Coated Carbide with Thin Ultra-fine TiCN Coating
- 10 Inserts Per Pack

Product Brochure For L053

Specific Features



Tip

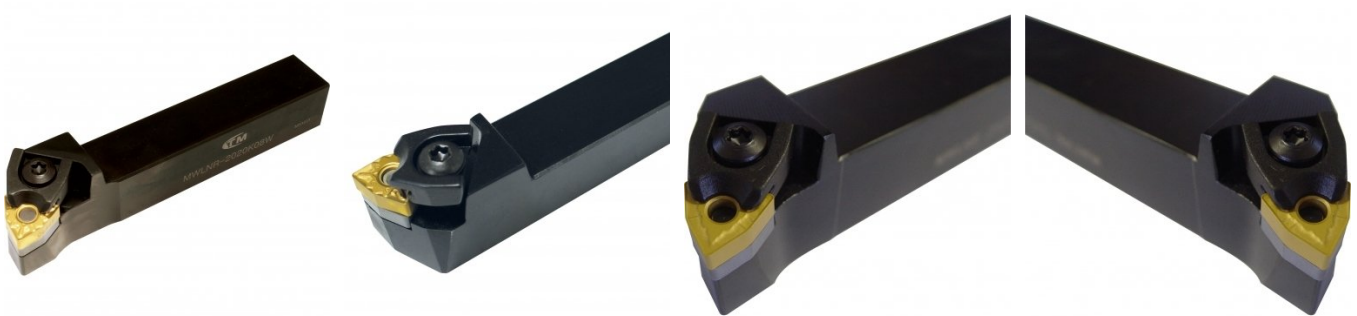
Recommended Accessories

L039
 Right Hand Turning Tool Holder

L040
 Left Hand Turning Tool Holder

L041
 Right Hand Turning Tool Holder

L042
 Left Hand Turning Tool Holder



L415
 Right Hand Boring Bar

L416
 Right Hand Boring Bar

L452
 Lathe Turning Tool Kit - 3 piece
 Insert Type

L453
 Lathe Turning Tool Kit - 3 piece
 Insert Type

