

Product Brochure For K8787

RF-19V Pedestal Drill - QLD Schools / TAFE

31.5mm

QLD Contract Item No. 26.3



ORDER CODE:	K8787
NSW DOE Item No.:	~
QLD DOE Item No.:	26.3
MODEL:	Schools / TAFE RF-19V
Bench / Pedestal Type:	Pedestal
Duty Type:	Industrial-Duty
Drill Capacity (mm):	31.5
Spindle Taper (MT):	3
Threading Capacity:	~
Auto Feed (Yes / No):	~
Spindle Travel (mm):	125
Throat Depth (mm):	252
Quill Diameter (mm):	55
Collar Diameter (mm):	~
Column Diameter (mm):	100
Spindle To Table (mm):	678
Spindle To Base (mm):	1225
Table Shape:	Square
Micro Switch On Pulley Guard (Yes / No):	Yes
Table Size:	420 x 470
Spindle Drive Type:	B Section Belt
Spindle Steps (No.):	Electronic-Variable
Spindle Speeds (RPM):	115 - 2165
Motor Power (kW / hp):	0.75 / 1
Voltage / Amperage (V / amp):	415
Overall Height (mm):	1860
Nett Weight (kg):	200



Description

We for many years have been working in close consultation with the education departments to ensure the most suitable equipment is provided to our schools and TAFE, not only does it comply with the departments stringent safety requirements but is built to last the distance. That's why we consider our company to be a specialist when it comes to supplying quality Wood Work and Metal Working Machinery for Public or Private Schools, TAFE Colleges and Trade Training Centres in all states of Australia.

Features

- Ideal for industrial workshop use
- Electronic variable speed system
- Digital spindle speed readout
- Quiet "B" section V-belt drive system
- Quick action belt tensioning lever
- Adjustable safety drilling chuck guard with swivel screen
- Safety micro switch on belt cover
- Safety magnetic-type switch
- Emergency stop switch
- Rack & pinion table height adjustment with locking lever
- Thick walled column ensuring greater rigidity
- Drilling depth stop setting with scale
- T slotted work table
- Variable spindle speeds dial - 115-2165rpm
- Fan-cooled 415 volt motor rated for continuous use with overload protection

Includes

- 13mm Keyless Drill Chuck (C292)
- 3MT x JT6 Drill Chuck Arbor (D443)

Product Brochure For K8787

Specific Features



Left View



Front View



Switch Box



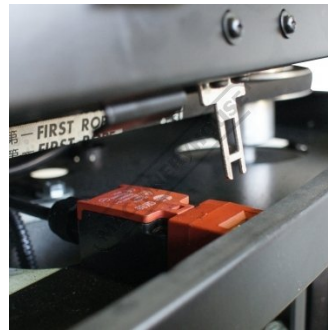
Safety Chuck Guard



Digital Speed Readout and Chart



Belt Tension Adjustment



Micro Switch on Belt Cover



Quill Handle



Drill Chuck



Rack and Pinion Table Adjustment

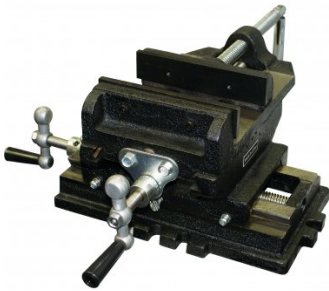


Emergency Stop

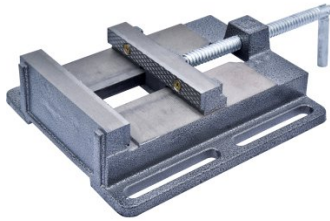
Product Brochure For K8787

Recommended Accessories

V122
 Compound Drill Vice



V126
 Drill Press Vice



D322
 3MT Morse Taper Shank Drill Bit



D1171
 Metric Industrial HSS Reduced Shank Drill Set



D1181
 Imperial Industrial HSS Reduced Shank Drill Set



D117
 Metric HSS Reduced Shank Drill Set



D443
 3MT x JT6 Drill Chuck Arbor



D422
 Drill Sleeve - Morse Taper



Product Brochure For K8787

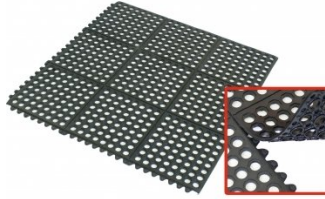
T004B
 Tapping Chuck - Fixed



M800
 Rubber Mat - Anti-Fatigue



M805
 Rubber Mat - Anti-Fatigue



S090A
 Soluble Metal Cutting Fluid - 1 Litre



S090
 Soluble Metal Cutting Fluid - 5 Litre



S076
 Cutting Tool Lubricant Fluid - 500ml



S077
 Drilling, Tapping & Cutting Tool Lubricant Spray - 400g



S075
 Cutting Tool Lubricant Paste - 200g



S074
 Cutting Tool Lubricant Paste - 500g



O000
 SpillFix Universal Organic Absorbent



O043
 Rust & Corrosion Preventive



O042
 General Purpose Lubricant & Corrosion Inhibitor



Product Brochure For K8787

O040

Rust & Corrosion Preventive

O044

Rust & Corrosion Preventive

