

Product Brochure For K8201

PD-35S Bench Drill - Schools / TAFE

31.5mm



ORDER CODE:	K8201
NSW DOE Item No.:	~
QLD DOE Item No.:	~
MODEL:	Schools / TAFE PD-35S
Bench / Pedestal Type:	Bench
Duty Type:	Industrial-Duty
Drill Capacity (mm):	31.5
Spindle Taper (MT):	3
Threading Capacity:	~
Auto Feed (Yes / No):	No
Spindle Travel (mm):	125
Throat Depth (mm):	225
Quill Diameter (mm):	72
Collar Diameter (mm):	92
Column Diameter (mm):	92
Spindle To Table (mm):	330
Spindle To Base (mm):	775
Table Shape:	Square
Micro Switch On Pulley Guard (Yes / No):	Yes
Table Size:	350 x 350
Spindle Drive Type:	B Section Belt
Spindle Steps (No.):	9
Spindle Speeds (RPM):	180 - 1680
Motor Power (kW / hp):	0.75 / 1
Voltage / Amperage (V / amp):	240 / 10
Overall Height (mm):	1200
Nett Weight (kg):	116



Description

We for many years have been working in close consultation with the education departments to ensure the most suitable equipment is provided to our schools and TAFE, not only does it comply with the departments stringent safety requirements but is built to last the distance. That's why we consider our company to be a specialist when it comes to supplying quality Wood Work and Metal Working Machinery for Public or Private Schools, TAFE Colleges and Trade Training Centres in all states of Australia.

Features

- Ideal for industrial workshop use
- Quiet "B" section V-belt drive system
- Quick action belt tensioning lever
- Adjustable safety drilling chuck guard with swivel screen
- Safety micro switch on belt cover
- Safety magnetic-type switch
- Emergency stop switch
- Rack & pinion table height adjustment with locking lever
- Thick walled column ensuring greater rigidity
- Table tilts left & right to 45° & rotates 360°
- Drilling depth stop setting with scale
- T slotted work table
- 9 Spindle Speeds - 180, 300, 320, 310, 430, 480, 620, 1050, 1200, 1680rpm
- Fan-cooled 240 volt motor rated for continuous use with overload protection
- Includes heavy duty cabinet stand

Includes

- 100mm Delux Drill Vice (V144)
- 13mm Keyless Drill Chuck (C292)
- 3MT x JT6 Drill Chuck Arbor (D443)
- 2MT - 1MT Drill Sleeve (D420)
- 3MT - 2MT Drill Sleeve (D422)
- 12mm Clamp Kit Tee Nuts (C085A)

Product Brochure For K8201

Specific Features



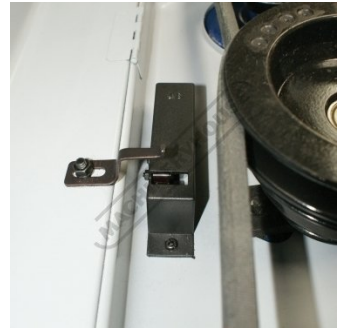
Magnetic Switch and Safety Stop Switch



Lockable Switch



Safety Stop Switch



Safety Micro Switch on Belt Cover



Adjustable Safety Chuck Guard



Tilting & Rotating Cast Iron Table

Belt Position	Speed (RPM) 50Hz	Belt Position	Speed (RPM) 50Hz
DE	180	DG	620
CE	300	AF	1050
DF	320	BG	1200
BE	430	AG	1680
CF	480		

Speed Chart



B Section Belt Drive System



Quill Handle



Drilling Depth Stop Setting with Scale



Motor & Belt Tension Lever & Lock



Base Cabinet



T Slot Base



1hp 240V Motor



Rear View



100mm Delux Drill Vice (V144)

Product Brochure For K8201



13mm Keyless Drill Chuck (C292)



3MT x JT6 Drill Chuck Arbor (D443)



2MT 1MT Drill Sleeve (D420)



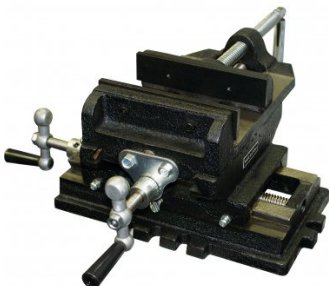
3MT 2MT Drill Sleeve (D422)



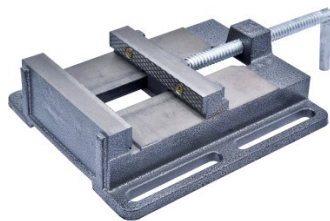
Clamp Kit Tee Nuts (C085A)

Recommended Accessories

V122
Compound Drill Vice



V126
Drill Press Vice



D322
3MT Morse Taper Shank Drill Bit



D1171
Metric Industrial HSS Reduced Shank Drill Set



Product Brochure For K8201

D1181
 Imperial Industrial HSS Reduced
 Shank Drill Set



D117
 Metric HSS Reduced Shank Drill
 Set



D443
 3MT x JT6 Drill Chuck Arbor



D422
 Drill Sleeve - Morse Taper



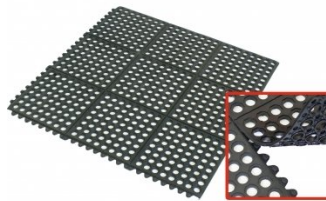
T004B
 Tapping Chuck - Fixed



M800
 Rubber Mat - Anti-Fatigue



M805
 Rubber Mat - Anti-Fatigue



S090A
 Soluble Metal Cutting Fluid - 1
 Litre



S090
 Soluble Metal Cutting Fluid - 5
 Litre



S076
 Cutting Tool Lubricant Fluid -
 500ml



S077
 Drilling, Tapping & Cutting Tool
 Lubricant Spray - 400g



S075
 Cutting Tool Lubricant Paste -
 200g



Product Brochure For K8201

S074
 Cutting Tool Lubricant Paste -
 500g



O000
 SpillFix Universal Organic
 Absorbent



O043
 Rust & Corrosion Preventive



O042
 General Purpose Lubricant &
 Corrosion Inhibitor



O040
 Rust & Corrosion Preventive



O044
 Rust & Corrosion Preventive

