

Product Brochure For K056A

Hydraulic NC Pressbrake & NC Guillotine Package Deal - PB-70E & HG-2504C

Pressbrake 70T x 2500mm, Guillotine 2500 x 4mm

Pressbrake Estun NC-E21 Control, Guillotine Estun NC-E21S Control



ORDER CODE:	K056A
MODEL:	PB-70E & HG-2504C
Control Unit (Type):	Estun NC-E21
Nominal Pressure - Tonnage (Ton):	70
Nominal Pressure - Kilonewtons (kN):	630
Length of Work Table (mm):	2500
Distance Between Columns (mm):	2050
Throat Depth (mm):	260
Maximum Open Height (mm):	325
Ram Stroke (mm):	90
Machine Axis (No.):	2
Safety Guarding System (Type):	Light Curtain System
Backgauge Travel (mm):	520
Table Bed Crowning System (Type):	-
Motor Power (kW / hp):	7.5 / 10
Motor Voltage (V):	415
Floor Space Requirements (L x W x H) (mm):	-
Nett Weight (kg):	7700



Description

Metalmaster Press brakes are designed and tested to provide precision bending capabilities demanded in industry. The main structural frames are constructed from rolled, stress relieved solid steel to prevent distortion during the bending process and under extreme continuous loads.

Featuring a heavy duty adjustable torsion bar with a positive stop system ensures consistent and accurate bending.

All electrical components are of European quality supplied by leading brands such as Siemens, Schneider, Telemecanique, Merlin Gerin and ABB.

Features

- PB-70E - Hydraulic NC Pressbrake
- Hydraulic synchronised positive stop design, the ram stroke is controlled by a precision mechanical nut depth stop built into each cylinder, electronically controlled by Estun NC-E21 digital control assuring accuracy and repeatability.
- Mono-block steel frame design, welded, stress relieved and final machining ensures minimal bed deflection under load.
- Bending Parallelism is ensured by the oversize top beam and heavy duty torsion bar.
- Conveniently mounted control box on pendant for quick swivel and adjustments.
- Estun NC-E21 programmable digital control stores up to 40 unique programs with 25 automatic progressive bending steps in each individual program, assuring production accuracy & repeatability every time.
- Estun NC-E21 programmable leadscrew back gauge system, simply enter the desired measurement into the controller and press start, the back gauge then will move quickly into the position you have requested.
- Operator adjustable stroke open height & mute height switches enables increased productivity
- Adjustable bending pressure control allows the operator to quickly and accurately set the pressure required for different material. This user friendly system incorporates hydraulic overload protection.
- European style Intermediate top tool clamping system, featuring an adjustable wedge clamping system for crowning as well as a safety key to stop the punch dropping when changing punch positions.
- Segmented heavy duty 35° offset top punch is segmented for selective bend width applications and offset for return bend clearance.
- Multi vee ("V") bottom die is made from one 2500mm solid die block design to handle heavy plate, safety edge vee ("V") is incorporated in bottom die block.
- Sliding front material sheet supports enabling a wide range of material sizes to be aligned and supported at the required height. This feature is achieved with a "T" slot machined down the total length of the die bed; sheet supports are also adjustable vertically to assist in supporting material with return bends already folded.
- Rear sliding safety gate with micro switch combined with access panels placed at each end of machine allows the operator to clearly view tooling and work piece during the bending operation, Metalmaster specially design gates to suit Australian safety requirements
- The vertical top beam slides are treated to provide greater wear resistance and increased accuracy.
- Mild steel capacity is rated on hot rolled material with 250MPA

Product Brochure For K056A

- HG-2504C - Hydraulic Swing Beam Guillotine
 - 2500mm x 4mm cutting capacity
 - Estun E21S controller stores up to 40 unique programs with 25 automatic progressive cutting steps in each individual program, assuring production accuracy & repeatability every time
 - Hardened ballscrew backgauge system, simply enter the desired measurement into the Estun E21S controller and press go, the backgauge then will move quickly into the position you have requested. The superior hardened ballscrew system eliminates any backlash that leadscrew type machines produce
 - Rapid blade gap adjustment ensuring quick & accurate alteration of blade gap between material changes.
 - Automated hydraulic material clamping system designed with individual hold downs along the length of the machine, The individual hold downs are fitted with nylon inserts to protect the material from indentation when clamping.
 - Control unit mounted on swivel pendant arm enabling operator easy access, this is very useful when machine is loaded with full length of material.
 - Transfer balls inserted into work table allowing larger sheets to be easily positioned to the cut position and squaring arm.
 - Top shearing blade has two (2) cutting edges allowing blade rotation.
 - Bottom shearing blade has four (4) cutting edges allowing multiple blade rotations.
 - The entire steel plate structure of the main frame has been specially prepared to ensure maximum penetration during the welding process. In addition to this the cutting beam has been stress relieved eliminating any distortion after manufacturing.
 - Shadow line lighting has been incorporated into the machine frame providing a clear cutting line on the work piece and enabling scribed or marked material to be cut with simplicity as required.
 - A heavy duty squaring arm fitted with a graduated rule allows the operator to quickly cut the required size from the front of machine. The squaring arm also assists to align the material square to the cutting blades.
 - Sliding rear material chute so scrap material does not build up in the rear of the machine.
 - A safety system with photo electric rear guards are fitted to the rear steel side gates ensuring that the machine will be disabled if a person enters rear of machine when in use.
 - Mild steel capacity is rated on hot rolled material with 250MPA
- Pre-Commissioning:
1. Guillotine is run & tested prior delivery
 2. Hydraulic oil is included with machine

Includes

- PB-70E - Hydraulic NC Pressbrake
 - ESTUN NC-E21 control mounted on a swivel pendant for optimal ergonomics
 - Adjustable front sheet support arms
 - Emergency stop buttons strategically located on control panel and foot control
 - Mobile dual operation foot control
 - Segmented 35° offset top tooling
 - Solid one piece four way multi vee (V) die block
 - Top tooling tool intermediate holder system with wedge type adjustment
 - Powered leadscrew back gauge with 520mm travel, operated by Estun NC-E21 control
 - Oil tank level indicator
 - Metal constructed safety guarding
 - Integrated hydraulic system allowing rapid approach speed switching automatically to slow bend
 - Includes safety control guarding system with light curtains fitted
-
- HG-2504C - Hydraulic Swing Beam Guillotine
 - Estun E21S Controller
 - Mobile foot pedal for "hands free operation"
 - Single point rapid blade gap adjustment
 - High quality blades suitable for cutting stainless steel
 - Hardened ballscrew backgauge with 750mm travel
 - Automatic backgauge retract function during cutting
 - Swing away backgauge function for cutting long sheets
 - Individual hydraulic clamp hold downs with nylon pads
 - LED Shadow line lighting
 - Transfer balls on table
 - Heavy duty support arms and squaring arm
 - Stroke counter and short stroke adjustment
 - Sliding material chute, easily allowing operator to retrieve cut pieces
 - Photo electric safety light beams on rear guarding
 - Compliant with AS/NZS 4024.1 – 2019 Safety of Machinery Series

Product Brochure For K056A

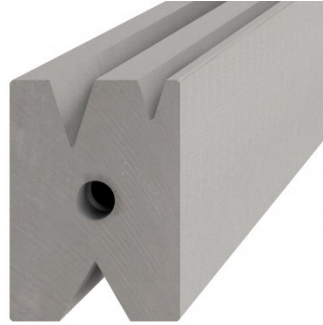
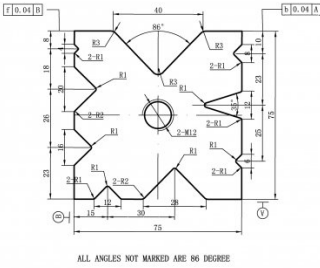
Recommended Accessories

S9927
 75mm Die Block Pressbrake Tooling

S989
 35° Top Punch Pressbrake Tooling

S996A
 60mm Die Block Pressbrake Tooling

S996B
 60mm Die Rail Pressbrake Tooling



S988
 Quick Action Intermediate Clamps

Q200
 Combination Set

Q200A
 Combination Set

Q201
 Universal Bevel Protractor

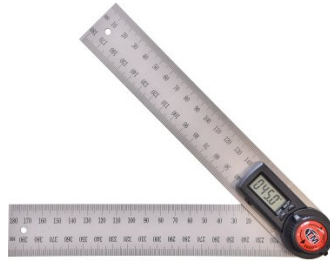


Product Brochure For K056A

Q2105
Digital Height Gauge



M970
Digital Angle Rule



M972
Digital Angle Rule



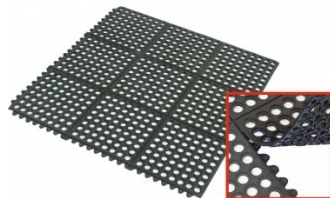
M974
Digital Angle Rule



M800
Rubber Mat - Anti-Fatigue



M805
Rubber Mat - Anti-Fatigue



O000
SpillFix Universal Organic Absorbent



O043
Rust & Corrosion Preventive



O042
General Purpose Lubricant & Corrosion Inhibitor



O040
Rust & Corrosion Preventive



O044
Rust & Corrosion Preventive



O004
Superdraulic ISO 46 Hi Temp Hydraulic Oil

