

Product Brochure For H358

25mm 8.5T Grade S - Lifting Bow Shackle - GSSB25

Galvanised Finish With Yellow Pin

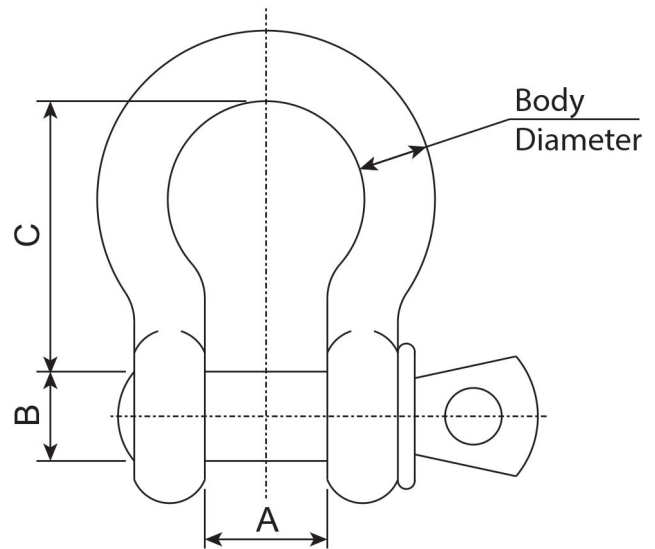
"Grade S" - Compliant & Meets The Requirement of AS2741

Ex GST
\$27.00

Inc GST
\$29.70



Order Code:	H358
Model:	GSSB25
W.L.L - Working Load Limit (Tonne):	8.5
Body Diameter (mm):	25
A - Throat Opening (mm):	43
B - Pin Diameter (mm):	29
C - Throat Depth (mm):	82



Description

- The most common shackles used in lifting applications, with a high strength to size ratio
- Easy and effective way of providing a connection of slings, chains and wire ropes
- Supplied in a galvanised finish with yellow painted pin
- Suitable applications: Marine, agricultural, towing, & general industrial
- Compliant & meets the requirement of AS 2741

Features

- 8.5 Tonne working load limit
- 25mm Body Diameter
- 82mm Throat depth
- 43mm Throat opening
- 29mm Pin diameter