

Product Brochure For D600V

Heavy-Duty Pedestal Drill - Belt Drive - PD-510

Table Tilts Left & Right To 45°

Ø32mm Drill Capacity with 4MT Spindle Taper



ORDER CODE:	D600
MODEL:	PD-510
Type - Bench / Pedestal:	Pedestal
Duty Type:	Heavy-Duty
Drilling Diameter Capacity (mm):	Ø32
Spindle Taper (MT):	4
Spindle Travel (mm):	120
Throat Depth (mm):	255
Quill Diameter (mm):	62
Collar Diameter (mm):	75
Column Diameter (mm):	92
Spindle To Table (mm):	745
Spindle To Base (mm):	1205
Table Shape:	Rectangle
Table Size (mm):	470 x 415
Work Light:	Yes
Micro Switch On Pulley Guard:	Yes
Drive Belt Type:	A Section
Spindle Speed Steps (No.):	12
Spindle Speed Range (rpm):	150 - 2450
Motor Power (kW / hp):	1.8 / 2.4
Voltage / Amperage (V / amp):	240 / 10
Overall Height (mm):	1710
Nett Weight (kg):	125



Description

When it comes to big hole drilling up to Ø32mm with a belt drive machine, there really isn't any substitute for power, as this beast PD-510 pedestal drill has a massive 2.4hp 240-volt motor driving the spindle.

This machine is heavy duty rated and the large drill head has a work light fitted underneath to shine directly onto your job, the large Ø62mm quill provides support to increase accuracy & the 470 x 415mm square table offers more surface area to work on than any other drill on the market.

Mostly constructed from cast iron and machined steel to provide superior stability and strength. The 12-belt speed pulley system offers a wide range of speeds between 150-2450rpm. The down feed handle is also made from cast iron in one solid piece design and fitted with soft hand grips for your comfort & convenient drilling depth feed control.

The drill quill is equipped with a large 4 morse taper spindle allowing you to fit 4MT drill bits directly to the spindle or 1,2 or 3MT drill bits with optional adaptors. A quality Ø3-Ø16mm keyed drill chuck with 4MT arbor is included & fitted. The drill table can tilt left or right, and the height is also easily adjusted up or down via rack & pinion hand lever & can be locked into position. Furthermore, the whole table assembly can be swivelled away to allow the machined base to be used as a work support.

The magnetic safety switch with emergency stop is conveniently front mounted for quick access. The drill also includes an adjustable safety drill chuck guard and the belt cover is equipped with a safety switch to ensure safe belt speed changing.

Features

- Ideal for home, workshop or farm use
- Quiet V-belt drive system
- Quick action belt tensioning lever
- Drill chuck key holder mounted on right side of the machine
- Adjustable safety drilling chuck guard with flip up screen
- One piece cast iron drilling lever with comfort grips
- Safety magnetic-type switch
- Safety micro switch on pulley guard
- Rack & pinion table height adjustment with locking lever
- Thick walled column ensuring greater rigidity
- Table tilts left & right to 45°
- Drilling depth stop
- Work light mounted underneath drill head to provide direct light onto the work piece
- T slotted work table

Product Brochure For D600V

- 12 Spindle speeds - 150, 240, 270, 330, 430, 470, 830, 1030, 1270, 1430, 1790, 2450rpm
- Fan-cooled, copper wound 240V motor

Includes

- 16mm keyed drill chuck and arbor
- Chuck key to suit
- Drill drift tool to remove drill chuck or taper shank drills

Optional Accessories

- Replacement 16mm Drill Chuck (C290)
- Replacement 4MT x JT3 Arbour (D454A)

Specific Features



Left View



Magnetic Switch



Emergency Stop Switch and Light Switch



Work Light



Adjustable Safety Chuck Guard with Flip Up Screen



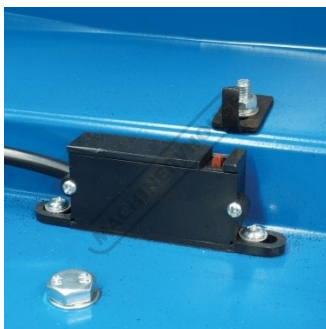
Safety Chuck Guard Flipped Up



1 Piece Cast Iron Drilling Lever



Drilling Depth Stop Setting With Scale



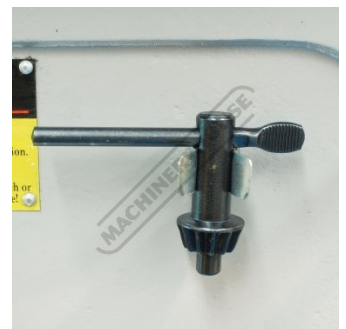
Safety Micro Switch on Pulley Guard



Head Side View

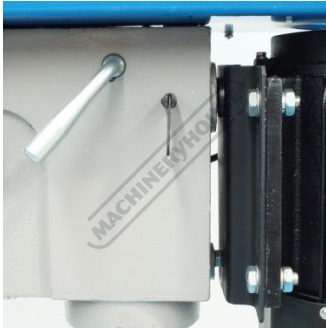


A Section Belt Drive System



Chuck Key Holder

Product Brochure For D600V



Belt Tension Lever and Lock

150	270	470	1270
240	430	1030	1790
330	830	1430	2450

Speed Chart

Speed Chart (RPM) and Recommendations						
Imp.	Metric	S/Wood	H/Wood	Brass	Alum	Steel
1/16 - 3/16	1.5 - 4.8	3000	3000	3000	3000	3000
3/16 - 3/8	6.0 - 10.0	3000	1500	1200	2500	1000
7/16 - 5/8	11.0 - 16.0	1500	750	750	1500	600
11/16 - 1	22.0 - 25.0	750	500	400	1000	350
1 1/8 - 1 1/4	28.5 - 32.0	750	250	400	700	250

Recommended Speed for Drill Size and Material



Tilting and Rotating Cast Iron Table



Work Table

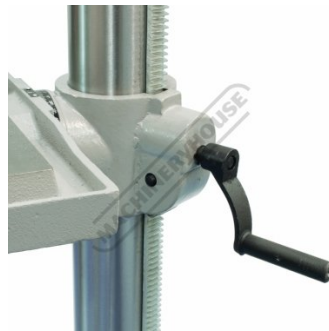


Table Height Adjustment Crank



Base



Drill Drift

Recommended Accessories

C086
 Clamp Kit Tee Nuts

P220
 Gravity Feed Coolant System

S090A
 Soluble Metal Cutting Fluid - 1 Litre

L300
 Magnetic Swarf Remover



Product Brochure For D600V

M9991
 Magnetic Floor Sweeper



D1272
 Metric 135° Precision HSS Drill Set - 25 Piece



D1282
 Imperial 135° Precision HSS Drill Set - 29 Piece



D126
 Metric 135° Precision HSS Drill Set - 170 Pieces



D1171
 Metric Industrial HSS Reduced Shank Drill Set



D1181
 Imperial Industrial HSS Reduced Shank Drill Set



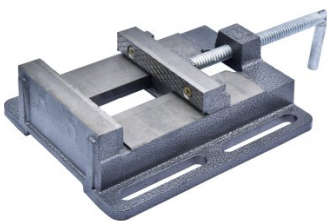
D117
 Metric HSS Reduced Shank Drill Set



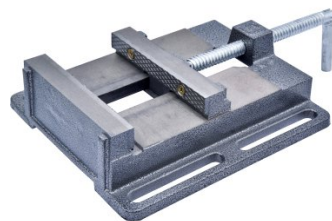
V124
 Drill Press Vice



V125
 Drill Press Vice



V126
 Drill Press Vice



V144
 Drill Press Vice



V145
 Drill Press Vice



Product Brochure For D600V

V141
 Safeway Precision Drill Press
 Vice



V142
 Safeway Precision Drill Press
 Vice



V143
 Safeway Precision Drill Press
 Vice



V114
 Tilting Drill Press Vice



V1204
 Compound Drill Vice



V1205
 Compound Drill Vice



T004
 Reversible Tapping Chuck -
 Adjustable Clutch



T005
 Reversible Tapping Chuck -
 Adjustable Clutch



P090
 Pipe & Tube Notcher
 Attachment



C292
 Industrial Drill Chuck - Keyless
 Type



C294
 Industrial Drill Chuck - Keyless
 Type



D454
 4MT x JT6 Drill Chuck Arbor
 Type



Product Brochure For D600V

D454A
 4MT x JT3 Drill Chuck Arbor



D422
 Drill Sleeve - Morse Taper



O000
 SpillFix Universal Organic Absorbent



O043
 Rust & Corrosion Preventive



O042
 General Purpose Lubricant & Corrosion Inhibitor



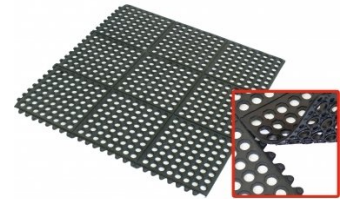
O040
 Rust & Corrosion Preventive



O044
 Rust & Corrosion Preventive



M805
 Rubber Mat - Anti-Fatigue



M800
 Rubber Mat - Anti-Fatigue

