

Product Brochure For D596V

Heavy-Duty Pedestal Drill - Belt Drive - PD-360

Table Tilts Left & Right To 45° & Rotates 360°
 Ø20mm Drill Capacity with 2MT Spindle Taper



ORDER CODE:	D596
MODEL:	PD-360
Type - Bench / Pedestal:	Pedestal
Duty Type:	Heavy-Duty
Drilling Diameter Capacity (mm):	Ø20
Spindle Taper (MT):	2
Spindle Travel (mm):	85
Throat Depth (mm):	180
Quill Diameter (mm):	47
Collar Diameter (mm):	55
Column Diameter (mm):	72
Spindle To Table (mm):	685
Spindle To Base (mm):	1175
Table Shape:	Square
Table Size (mm):	290
Work Light:	Yes
Micro Switch On Pulley Guard:	Yes
Drive Belt Type:	A Section
Spindle Speed Steps (No.):	12
Spindle Speed Range (rpm):	280 - 2380
Motor Power (kW / hp):	0.75 / 1
Voltage / Amperage (V / amp):	240 / 10
Overall Height (mm):	1600
Nett Weight (kg):	66

Description

The PD-360 pedestal drill is the bigger brother to the BD-360 model and has an advantage over the bench model as it does not take up valuable bench space.

This machine is heavy duty rated and consequently has the same user-friendly features as its little brother. The larger drill head has a work light fitted underneath to shine directly onto your job, the quill diameter is approximately 20% larger to increase accuracy & the square table offers more surface area to work on, and additionally allows T-nut & clamps to be used on this design. This drilling machine is Ø20mm rated & beneficial for anyone requiring to drill consistent accurate holes and is commonly suited for any home workshop or farm use.

Mostly constructed from cast iron and machined steel to provide superior stability and strength. Powered by a 0.75kW, 1hp, 240-volt induction motor and coupled to a 12-belt speed pulley system offering wide range of speeds between 280-2380rpm. The down feed handle is also made from cast iron in one solid piece design and fitted with soft hand grips for your comfort & convenient drilling depth feed control.

The drill quill is equipped with a 2 morse taper spindle allowing you to fit 2MT drill bits directly to the spindle or 1MT drill bits with an optional adaptor. A quality Ø3-Ø16mm keyed drill chuck with 2MT arbor is included & fitted. The drill table can tilt left or right, rotate 360 degrees and the height is also easily adjusted up or down via rack & pinion hand lever & can be locked into position. Furthermore, the whole table assembly can be swivelled away to allow the machined base to be used as a work support.

The magnetic safety switch with emergency stop is conveniently front mounted for quick access. The drill also includes an adjustable safety drill chuck guard and the belt cover is equipped with a safety switch to ensure safe belt speed changing.

Features

- Ideal for home, workshop or farm use
- Quiet V-belt drive system
- Quick action belt tensioning lever
- Drill chuck key holder mounted on right side of the machine
- Adjustable safety drilling chuck guard with flip up screen
- One piece cast iron drilling lever with comfort grips
- Safety micro switch on pulley guard
- Safety magnetic-type switch
- Rack & pinion table height adjustment with locking lever
- Thick walled column ensuring greater rigidity
- Table tilts left & right to 45° & rotates 360°
- Drilling depth stop
- Work light mounted underneath drill head to provide direct light onto the work piece

Product Brochure For D596V

- Slotted work table
- 12 Spindle speeds - 280, 420, 440, 550, 620, 660, 1150, 1180, 1400, 1550, 1830, 2380rpm
- Fan-cooled, copper wound 240V motor

Includes

- 16mm keyed drill chuck and arbor
- Chuck key to suit
- Drill drift tool to remove drill chuck or taper shank drills

Optional Accessories

- Replacement 16mm Drill Chuck (C290)
- Replacement 2MT x JT3 Arbour (D442A)

Specific Features



Left View



Magnetic Switch



Emergency Stop Emergency Switch and Light Switch



Work Light



Adjustable Safety Chuck Guard with Flip Up Screen



Safety Chuck Guard Flipped Up



1 Piece Cast Iron Drilling Lever



80mm Spindle Travel



Drilling Depth Stop Setting With Scale



Safety Micro Switch on Pulley Guard



Head Side View



A Section Belt Drive System

Product Brochure For D596V



Chuck Key Holder



Belt Tension Lever and Lock



Speed Chart

Speed Chart (RPM) and Recommendations						
Imp.	Metric	S/Wood	H/Wood	Brass	Alum	Steel
1/16 - 3/16	1.5 - 4.8	3000	3000	3000	3000	3000
1/4 - 3/8	6.0 - 10.0	3000	1500	1200	2500	1000
7/16 - 5/8	11.0 - 16.0	1500	750	750	1500	600
11/16 - 1	22.0 - 25.0	750	500	400	1000	350
1 1/8 - 1 1/4	28.5 - 32.0	750	250	400	700	250

Recommended Speed for Drill Size and Material



Tilting and Rotating Cast Iron Table



Work Table



Table Height Adjustment Crank



Base



Drill Drift

Product Brochure For D596V

Recommended Accessories

W3425
 Drill Press Roller Support



P220
 Gravity Feed Coolant System



S090A
 Soluble Metal Cutting Fluid - 1
 Litre



C086
 Clamp Kit Tee Nuts



L300
 Magnetic Swarf Remover



M9991
 Magnetic Floor Sweeper



D1272
 Metric 135° Precision HSS Drill
 Set - 25 Piece



D1282
 Imperial 135° Precision HSS
 Drill Set - 29 Piece



Product Brochure For D596V

D126
 Metric 135° Precision HSS Drill Set - 170 Pieces



D1171
 Metric Industrial HSS Reduced Shank Drill Set



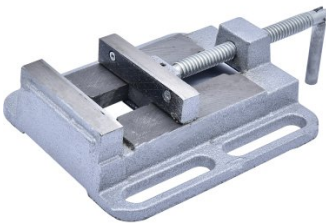
D1181
 Imperial Industrial HSS Reduced Shank Drill Set



D117
 Metric HSS Reduced Shank Drill Set



V124
 Drill Press Vice



V144
 Drill Press Vice



V145
 Drill Press Vice



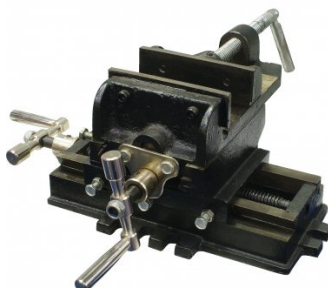
V141
 Safeway Precision Drill Press Vice



V114
 Tilting Drill Press Vice



V120
 Compound Drill Vice



V1204
 Compound Drill Vice



V1205
 Compound Drill Vice



Product Brochure For D596V

P090
 Pipe & Tube Notcher
 Attachment



C292
 Industrial Drill Chuck - Keyless
 Type



C294
 Industrial Drill Chuck - Keyless
 Type



D442
 2MT x JT6 Drill Chuck Arbor



D442A
 2MT x JT3 Drill Chuck Arbor



O000
 SpillFix Universal Organic
 Absorbent



O043
 Rust & Corrosion Preventive



O042
 General Purpose Lubricant &
 Corrosion Inhibitor



O040
 Rust & Corrosion Preventive



O044
 Rust & Corrosion Preventive



M800
 Rubber Mat - Anti-Fatigue



M805
 Rubber Mat - Anti-Fatigue

