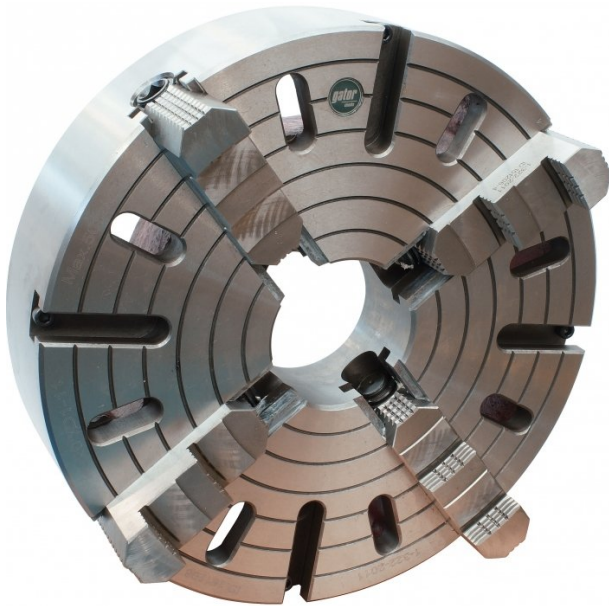


Product Brochure For C7192

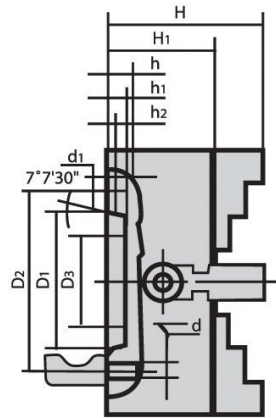
4 Jaw Independent Lathe Chuck - P14-500/D1-11

Ø500mm

D1-11 Camlock Mount



ORDER CODE:	C7192
Chuck Size (mm):	Ø500
Camlock:	D1-11
Speed (rpm):	500
D1 (mm):	196.8
D2 (mm):	235
D3 (mm):	125
H1 (mm):	120
h (mm):	~
Nett Weight (kg):	135



gator chucks



Description

The "P" series chucks are to German standards and feature jaws that are individually adjustable, allowing firm gripping of odd shaped items. The semi steel chuck has jaws manufactured from hardened high quality alloy steel. Thrust bearings and operating screws made of case hardened steel.
 Supplied with CAMLOCK PINS, 1 set of jaws and wrench.
 Manufactured to DIN55029

Features

- German design

Product Brochure For C7192

Specific Features



Rear View



Included Accessories

Recommended Accessories

A358
 Sky Hook Lifting Device



A358A
 Chuck Hook



A358B
 Choker Collar



A358C
 Bolt Down Adaptor

