

Product Brochure For C7081

3 Jaw Self Centring Lathe Chuck - PS Series

Ø200mm
 Back Plate Mount



gator chucks



Description

PS Series semi steel body lathe chucks are supplied with one piece standard and reverse jaws.

Gator is a world class state of the art producer of manual lathe chucks with over 30 years of manufacturing experience and production excellence. Gator chucks are manufacturing to DIN 55029 standard and built to last for precision machining applications. The state of the art, ISO 9001-2000 manufacturing facility is quality focused producing chucks for the worldwide market.

The PS Series lathe chucks are available in direct mount or back plate mount.

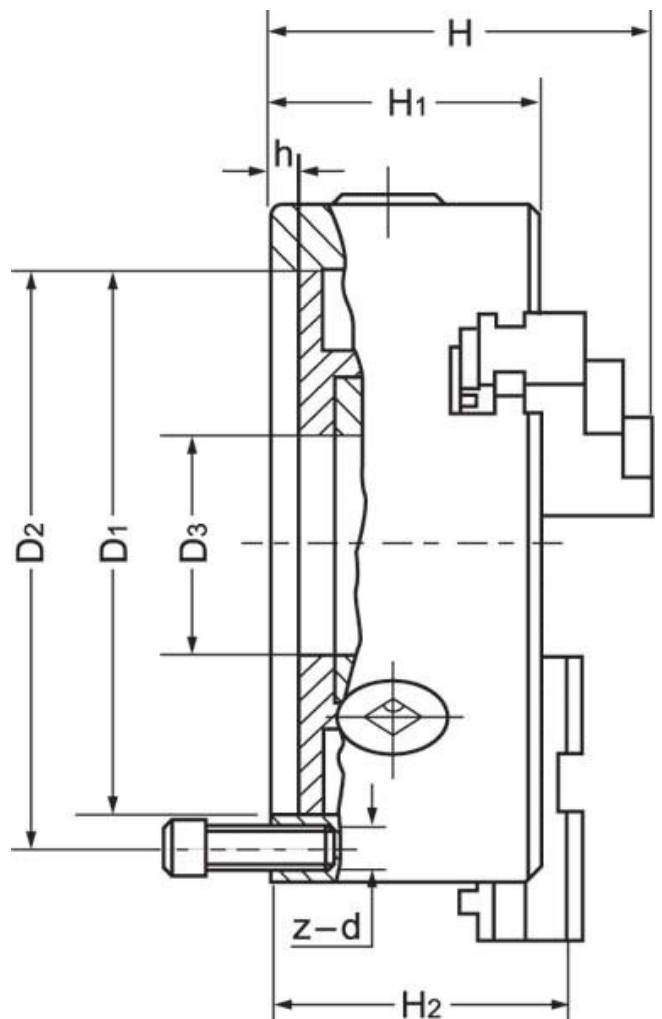
Features

- Comprehensive quality assurance and accuracy testing ensure standards remain high
- Each chuck is supplied with a set of inside and outside jaws and a chuck key
- All bearing surfaces are precisely machined
- Scroll plate is drop forged from fine alloy steel and finished with case hardening
- Jaw teeth, guideways & pinions are hardened & ground

Includes

- Outside jaws
- Inside jaws
- Mounting screws
- Chuck key

ORDER CODE:	C7081
Mounting Type:	Back Plate Mount
Chuck Size (mm):	Ø200
Outside Jaw (mm):	4 - 90
Inside Jaw (mm):	60 - 200
Speed (rpm):	2500
D1 (mm):	160
D2 (mm):	176
D3 (bore) (mm):	55
H (mm):	104
H1 (mm):	75
H2 (mm):	~
h (lowercase) (mm):	4
z-d (mm):	6 x M10
Nett Weight (kg):	18



Product Brochure For C7081

Recommended Accessories

L287
D1-4 Camlock Back Plate



L2875
D1-5 Camlock Back Plate



L289
D1-6 Camlock Back Plate



L286
D1-8 Camlock Back Plate



L2884
D1-11 Camlock Back Plate



A358
Sky Hook Lifting Device



A358A
Chuck Hook



A358B
Choker Collar



Product Brochure For C7081

A358C

Bolt Down Adaptor



M055

Magnetic Base and Dial Indicator

