

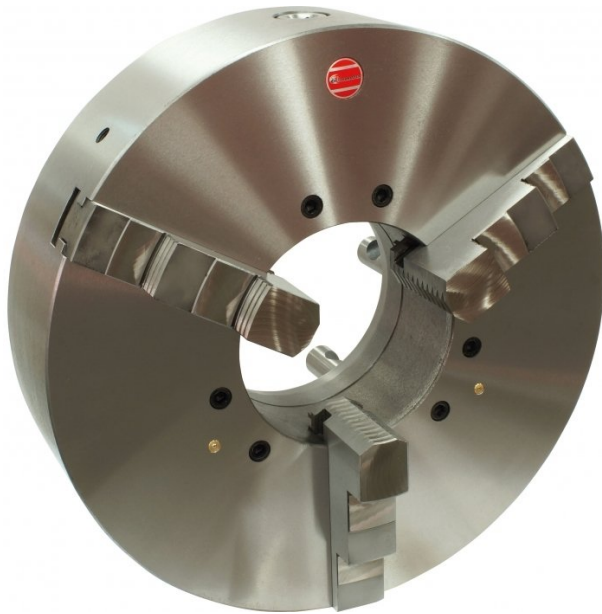
Product Brochure For C2706

3 Jaw Self Centring Lathe Chuck - K11-500/D11

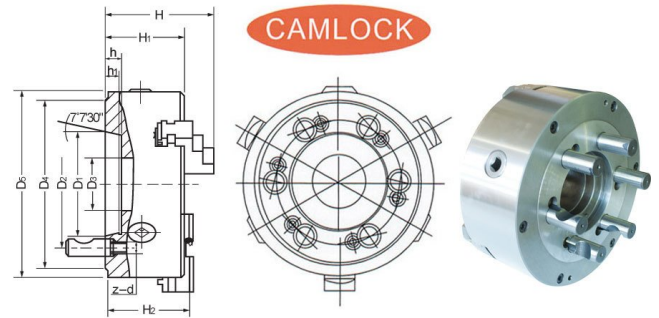
Ø500mm

D1-11 Camlock Mount

Ex GST **Inc GST**
\$2,150.00 **\$2,365.00**



ORDER CODE:	C2706
Chuck Size (mm):	Ø500
Camlock:	D1-11
Outside Jaw (mm):	11.5 - 210
Inside Jaw (mm):	150 - 500
Speed (rpm):	800
D1 (mm):	196.87
D2 (mm):	235
D3 (mm):	190
H (mm):	222
H1 (mm):	135
h (mm):	20
Nett Weight (kg):	155



Description

K11 SERIES Cast Iron Body
 Standard GB/T 4346.2-2002

Features

- World-class and industry leader in the manual lathe chuck field with over 30 years of manufacturing
- ToolMaster quality assurance and accuracy testing ensure standards remain high. ToolMaster is ISO 9001-2000 approved
- Each chuck is supplied with a set of inside and outside jaws and a chuck key

Includes

- Outside jaws
- Inside jaws
- Chuck key

Product Brochure For C2706

Specific Features



Front View



Camlock Mount



Included Accessories

Recommended Accessories

A358
 Sky Hook Lifting Device

A358A
 Chuck Hook

A358B
 Choker Collar

A358C
 Bolt Down Adaptor

