

Product Brochure For C264

### 3 Jaw Self Centring Lathe Chuck - K11-250/D18

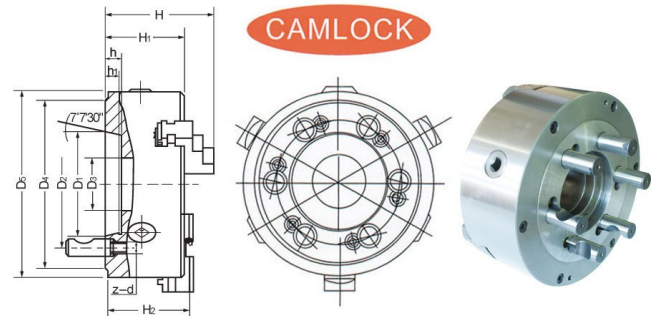
Ø250mm  
 D1-8 Camlock Mount

**Ex GST**  
**\$520.00**

**Inc GST**  
**\$572.00**



ORDER CODE:	C264
Chuck Size (mm):	Ø250
Camlock:	D1-8
Outside Jaw (mm):	6 - 110
Inside Jaw (mm):	90 - 250
Speed (rpm):	1600
D1 (mm):	139
D2 (mm):	172
D3 (mm):	80
H (mm):	120
H1 (mm):	80
h (mm):	5
Nett Weight (kg):	33



#### Description

K11 SERIES Cast Iron Body  
 ISO 9001-2000 standard accuracy

#### Features

- Manufactured by the world's largest chuck producer, established in 1938
- ToolMaster quality assurance and accuracy testing ensure standards remain high. ToolMaster is ISO 9001-2000 approved
- Each chuck is supplied with a set of inside and outside jaws and a chuck key

#### Includes

- Outside jaws
- Inside jaws
- Chuck key

Product Brochure For C264

**Specific Features**



Camlock Mount



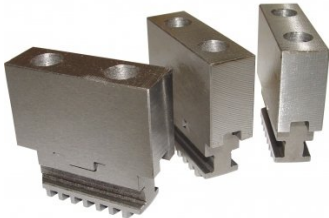
Included Accessories



Front View

**Recommended Accessories**

C7661  
Soft Jaw & Base Set



C2864  
Chuck Key



A358  
Sky Hook Lifting Device



A358A  
Chuck Hook



A358B  
Choker Collar



A358C  
Bolt Down Adaptor

