

Product Brochure For C259A

4 Jaw Independent Lathe Chuck - K72-630

Ø630mm
 Back Plate Mount



Description

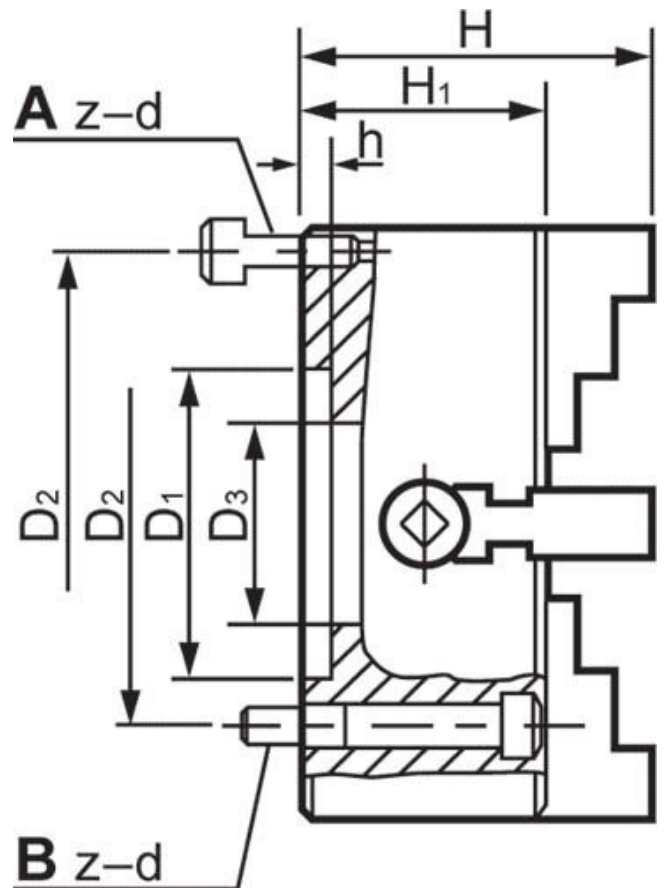
Manufactured from High Strength semi steel and precision machined
 Jaws are case-hardened to minimise wear
 Operating screws are made from alloy steel and case-hardened

Features

- Front Mounting

Ex GST	Inc GST
\$1,750.00	\$1,925.00

ORDER CODE:	C259A
Chuck Size:	Ø630
External Jaw Range (mm):	160 - 630
Internal Jaw Range (mm):	50 - 400
Speed (rpm):	600
D1 (mm):	220
D2 (mm):	258
D3 (mm):	180
H1 (mm):	118
h (mm):	10
z-d (mm):	4 - M20
Nett Weight (kg):	159



Product Brochure For C259A

Specific Features



Front View



Rear View



Included Accessories

Recommended Accessories

L287

D1-4 Camlock Back Plate



L2875

D1-5 Camlock Back Plate



L289

D1-6 Camlock Back Plate



L286

D1-8 Camlock Back Plate



L2884

D1-11 Camlock Back Plate



A358

Sky Hook Lifting Device



A358A

Chuck Hook



A358B

Choker Collar



Product Brochure For C259A

A358C
Bolt Down Adaptor

