

Product Brochure For C2595

4 Jaw Independent Lathe Chuck - K72-800

Ø800mm

Back Plate Mount



ORDER CODE:	C2595
Chuck Size:	Ø800
External Jaw Range (mm):	200 - 800
Internal Jaw Range (mm):	70 - 540
Speed (rpm):	-
D1 (mm):	250
D2 (mm):	300
D3 (mm):	210
H1 (mm):	135
h (mm):	12
z-d (mm):	8 - M20 (B)
Nett Weight (kg):	300

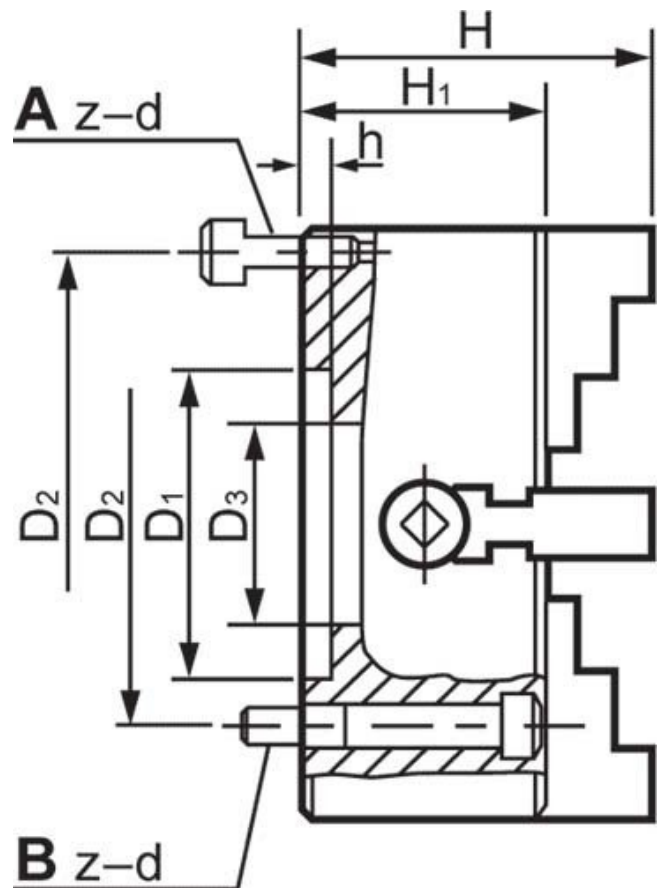


Description

Manufactured from High Strength semi steel and precision machined
 Jaws are case-hardened to minimise wear
 Operating screws are made from alloy steel and case-hardened

Features

- Front Mounting



Product Brochure For C2595

Recommended Accessories

L287
 D1-4 Camlock Back Plate



L2875
 D1-5 Camlock Back Plate



L289
 D1-6 Camlock Back Plate



L286
 D1-8 Camlock Back Plate



L2884
 D1-11 Camlock Back Plate



A358
 Sky Hook Lifting Device



A358A
 Chuck Hook



A358B
 Choker Collar



Product Brochure For C2595

A358C
Bolt Down Adaptor

