

Product Brochure For C250

## 4 Jaw Independent Lathe Chuck - K72-160

Ø160mm

Back Plate Mount

Ex GST  
**\$160.00**

Inc GST  
**\$176.00**



|                          |          |
|--------------------------|----------|
| ORDER CODE:              | C250     |
| Chuck Size:              | Ø160     |
| External Jaw Range (mm): | 50 - 160 |
| Internal Jaw Range (mm): | 8 - 80   |
| Speed (rpm):             | 2500     |
| D1 (mm):                 | 65       |
| D2 (mm):                 | 95       |
| D3 (mm):                 | 55       |
| H1 (mm):                 | 65       |
| h (mm):                  | 5        |
| z-d (mm):                | 4 - M10  |
| Nett Weight (kg):        | 9.2      |

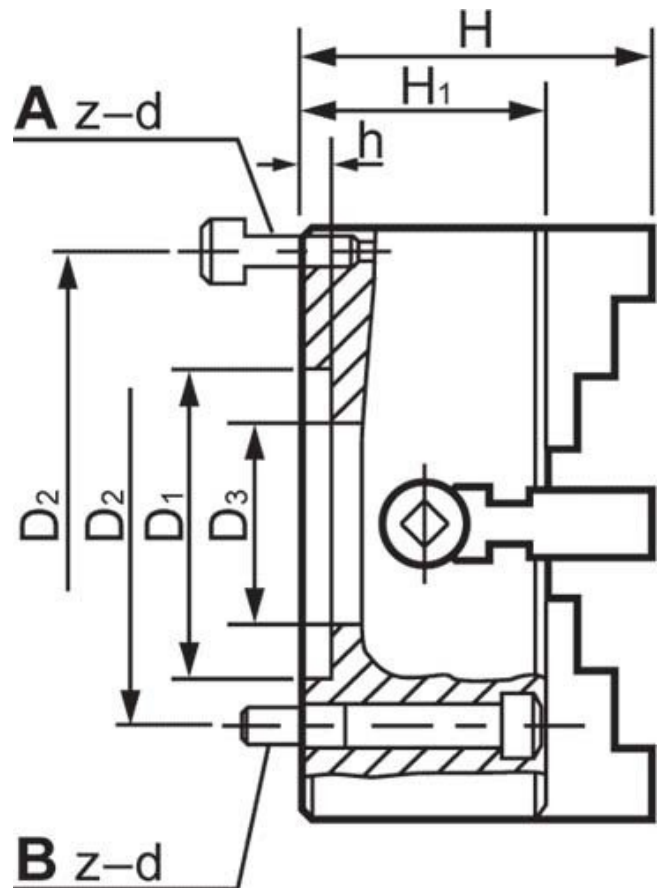


### Description

Manufactured from High Strength semi steel and precision machined  
 Jaws are case-hardened to minimise wear  
 Operating screws are made from alloy steel and case-hardened

### Features

- Front Mounting



Product Brochure For C250

**Specific Features**



Back Plate Mount



Included Accessories



Front View

**Recommended Accessories**

L287

D1-4 Camlock Back Plate

L2875

D1-5 Camlock Back Plate

L289

D1-6 Camlock Back Plate

L286

D1-8 Camlock Back Plate



L2884

D1-11 Camlock Back Plate

