

Product Brochure For C203

### 3 Jaw Self Centring Lathe Chuck - K11 SERIES

Ø160mm  
 Back Plate Mount

**On Sale**

<b>Ex GST</b>	<b>Inc GST</b>
<b>\$170.00</b>	<b>\$187.00</b>
<b>\$144.55</b>	<b>\$159.00</b>



ORDER CODE:	C203
Mounting Type:	Back Plate Mount
Chuck Size (mm):	Ø160
Outside Jaw (mm):	3 - 55
Inside Jaw (mm):	55 - 145
Speed (rpm):	2500
D1 (mm):	130
D2 (mm):	142
D3 (bore) (mm):	45
H (mm):	95
H1 (mm):	65
H2 (mm):	~
h (lowercase) (mm):	5
z-d (mm):	3 x M8
Nett Weight (kg):	9.4



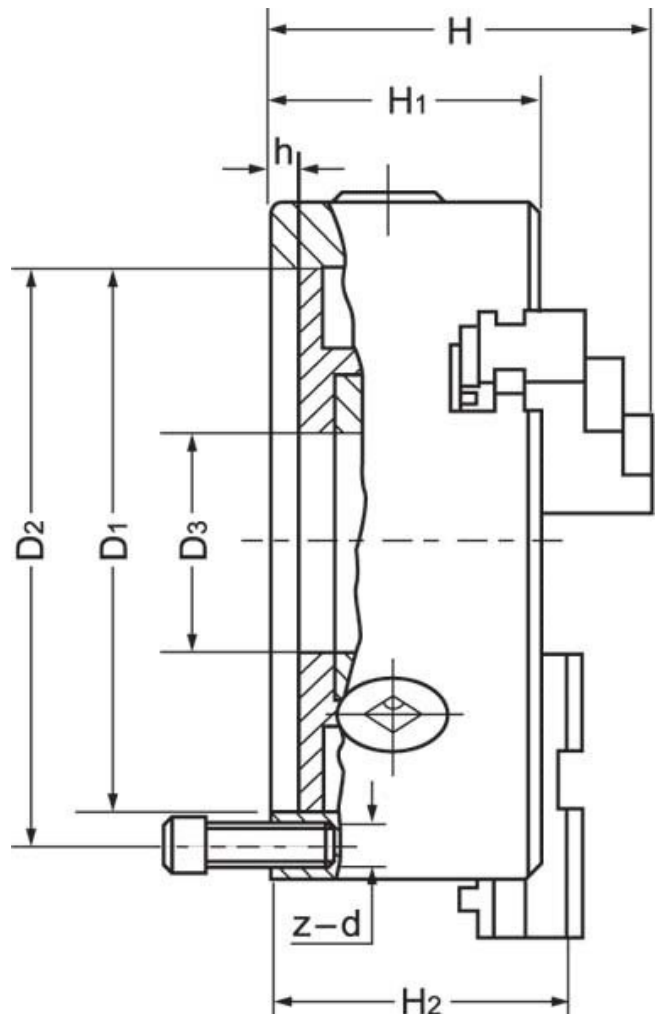
#### Description

K11 Series cast iron body lathe chucks are built to GB/T 4346.2-2002 standard, and supplied with one piece standard and reverse jaws.

World-class and industry leader in manufacturing manual lathe chucks for over 30 years. ToolMaster precision tolerance lathe chucks are ISO 9001-2000 approved, and ensure high quality with accuracy testing on every chuck.

#### Includes

- Outside jaws
- Inside jaws
- Mounting screws
- Chuck key



Product Brochure For C203

---

**Specific Features**



Back Plate Mount



Included Accessories

**Recommended Accessories**

L287  
D1-4 Camlock Back Plate



C2863  
Chuck Key



M055  
Magnetic Base and Dial Indicator

