

Product Brochure For B8070

RDB-100 - Manual Pipe & Tube Rotary Draw Bender

Ø1/2" - Ø1" NB Pipe Capacity, Ø6.35 - Ø44.45mm OD Round Tube Capacity



Ex GST
\$6,150.00

Inc GST
\$6,765.00

ORDER CODE:	B8070
MODEL:	RDB-100
Material (Type):	Pipe & Tube
Material Section (Type):	Round, Square & Rod
Machine (Type):	Manual - Rotary Draw
Hydraulic Jack Size (Tonne):	~
Round Pipe Range (NB) - Mild Steel (inch / mm):	Ø1/2" - Ø1"
Round Tube Range (OD) - Mild Steel (inch / mm):	Ø6.35 - Ø44.45
Square Tube Range (inch / mm):	19.05 - 25.4
Tube Wall Thickness - Mild Steel (inch / mm):	~
Round Pipe (NB) x Wall Capacity - Mild Steel (inch):	Ø1" x 1/8"
Round Pipe (NB) x Wall Capacity - Aluminium (inch / mm):	Ø1" x 1/8"
Round Pipe (NB) x Wall Capacity - Stainless Steel (inch / mm):	Ø3/4" x 7/64"
Round Tube (OD) x Wall Capacity - Mild Steel (inch / mm):	Ø44.45 x 2.1
Round Tube (OD) x Wall Capacity - Aluminium (inch / mm):	Ø50.8 x 3.17
Round Tube (OD) x Wall Capacity - Copper, Brass (inch / mm):	~
Round Tube (OD) x Wall Capacity - Stainless Steel (inch / mm):	Ø38.1 x 2.1
Round Tube (OD) x Wall Capacity - Chromoly (inch / mm):	Ø38.1 x 2.1
Solid Rod - Mild Steel (inch / mm):	Ø25.4
Square Tube x Wall Capacity - Mild Steel (inch / mm):	25.4 x 3.17
Rectangle Tube x Wall Capacity - Mild Steel (inch / mm):	~
Bend Speed - Maximum (Deg / Sec):	~
Bend Direction:	~
Centre Line Radius - Maximum (CLR) (inch / mm):	10 1/2" / 266.7mm
Centre Line Radius - Minimum (CLR) (inch / mm):	1/2" / 12.7mm
Tube Formers Included (inch / mm):	~
Pipe Formers Included (inch / mm):	~
Spigot Size on Ram (inch / mm):	~
Angle Capacity (deg):	206°
Hydraulic Pressure - Maximum (psi):	~
Motor Power (kW / hp):	~
Voltage / Amperage (V / amp):	~
Nett Weight (kg):	132

Description

NOTE: Image shown with Optional Tooling.

For the fabricator who needs to bend lower production runs, this manual tubing bender maintains a high standard of professional-looking bends.

Recommended for: Projects using thin wall tubing.

Features

- Bends up to Ø44.45mm OD tubing with a maximum wall thickness of 2.41mm and 1" NB (9/64", schedule 40) pipe
- Large-diameter indexing allows you to bend up to 206° (180° plus spring-back) without having to re-index and re-pin—unlike most other manual tube benders on the market
- Quick-release counter die system lets you easily load and unload the material
- Tension springback mechanism holds position as the bend mechanism grabs the next tooth on the index wheel

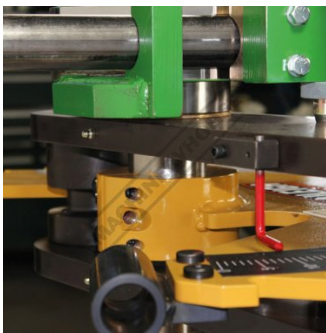
Product Brochure For B8070

- Degree scale displays your bend angle for fast reference
- All tooling has a start-of-bend indicator line so you can make complex bends with accuracy and confidence
- Ratcheting bend system lets you conveniently shift to manual override for lighter-gauge materials
- Ships mostly pre-assembled; simply attach the handle and stand
- Accepts hundreds of round and square tubing die sets as well as round pipe die sets
- Steel plate construction ensures strength and precision
- Includes stand, degree dial, and handle. Just add tooling and you're ready to bend

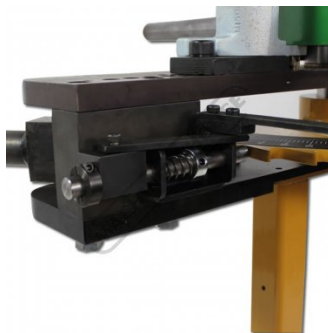
Includes

- Stand

Specific Features



Insert 1



Insert 2



Insert 3



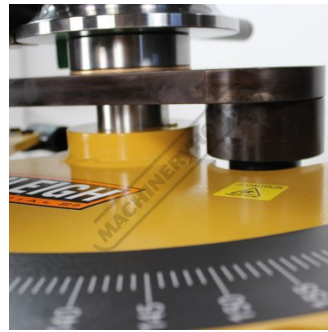
Insert 4



Insert 5



Insert 6



Insert 7



Insert 8

Recommended Accessories

B8119

Pipe/Tube Bending Lube -
475ml



B8122

1/2" NB x 180° Round Pipe Die
Set



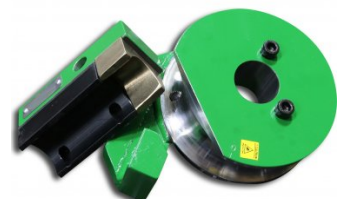
B8131

3/4" NB x 180° Round Pipe Die
Set



B8141

1" NB x 180° Round Pipe Die
Set



Product Brochure For B8070

B8152
 1-1/4" NB x 180° Round Pipe
 Die Set



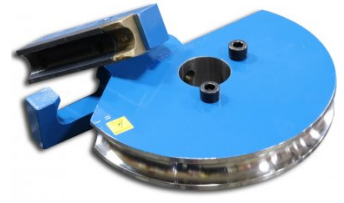
B8166
 1-1/2" NB x 180° Round Pipe
 Die Set



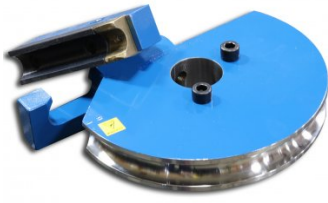
B8175
 2" NB x 180° Round Pipe Die
 Set



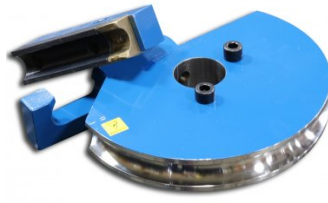
B8253
 25.4mm OD x 180° Round Tube
 Die Set



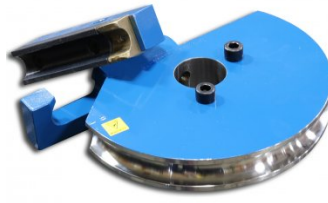
B8271
 31.75mm OD x 180° Round
 Tube Die Set



B8287
 38.1mm OD x 180° Round Tube
 Die Set



B8305
 44.45mm OD x 180° Round
 Tube Die Set



B8405C
 20mm OD x 180° Square Tube
 Die Set - Crush Bend



B8410C
 25mm OD x 180° Square Tube
 Die Set - Crush Bend

