

Product Brochure For L0512

## A2022N00CR02 - KENNAMETAL Carbide Inserts - Parting

2.2 x 11mm Grade KC5025 General Purpose  
 10 Inserts Per Pack

**Ex GST**  
**\$109.00**

**Inc GST**  
**\$119.90**

ORDER CODE:	L0512
ISO:	A2022N00CR02
Grade:	K5025
Length (mm):	11
S (mm):	2.2
D (deg):	7.6°



### Features

- KC5025- Coated grade: Suitable for heavy machining, particular suitable when turning Austenitic stainless steels. Reduces build up on the cutting edge
- 10 Inserts Per Pack

### Grade and Speed Recommendations - sfm (m/min)

workpiece material	first choice for general machining conditions
steel	KC5025 265 - 560 (80 - 170)
stainless steel	KC5025 265 - 500 (80 - 150)
cast iron	KC5025 230 - 500 (70 - 150)
non-ferrous	KC5025 500 - 980 (150 - 300)
high-temp alloys	KC5025 80 - 250 (25 - 75)
hardened material	KD081* 265 - 400 (80 - 120)

### Chipbreaker Design

**-CR**  
**Cutoff Rough**

• cutoff insert with precision molded cutting edge for higher feed rates  
 • curved cutting edge

Feed Rate: 0.08 - 0.3 mm/rev)  
 0.003 - 0.012 in/rev

NOTE: Feed rate is based on mild steel and is only a guide. This may vary with different applications



**Specific Features**



Tip

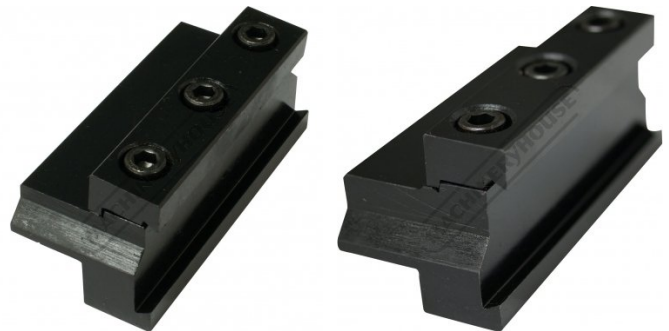
**Recommended Accessories**

L468  
 Parting Blade - 26 x 2mm

L469  
 Parting Blade - 26 x 3mm

L027  
 Parting Block - Suits 26mm  
 Blade

L028  
 Parting Block - Suits 26mm  
 Blade



L029  
 Parting Block - Suits 26mm  
 Blade

L029B  
 Parting Block - Suits 32mm  
 Blade

L030  
 Parting Block - Suits 32mm  
 Blade

L464  
 Professional Lathe Parting Tool  
 Kit - Insert Type



Product Brochure For L0512

[sales@machineryhouse.com.au](mailto:sales@machineryhouse.com.au)  
[www.machineryhouse.com.au](http://www.machineryhouse.com.au)

L465

Professional Lathe Parting Tool  
Kit - Insert Type

