

Product Brochure For K232

## RSS-4WS - Industrial Steel Shelving Plus Extension Package Deal

364kg Shelf Load Capacity  
 3878 x 610 x 1830mm

**Package Deal**

Ex GST                      Inc GST  
**\$520.00                      \$572.00**

**Package Contents - SAVE \$33.00 (Inc)**

1 x S014 - RSS-4WS Industrial Steel Shelving	<b>\$319.00</b>
1 x S014A - RSS-4WSA Industrial Steel Shelving Extension	<b>\$286.00</b>
<b>Normal Price (Inc):</b>	<b>\$605.00</b>



ORDER CODE:	K232
MODEL:	RSS-4WS + RSS-4WSA Package
Type:	Industrial Steel Shelving
Drawer Load Capacity (kg):	~
Shelf Load Capacity (kg):	364
Total Combined Load Capacity (kg):	~
Parts Bin Load Capacity Each (kg):	~
Buckets / Bins Total Quantity (No.):	~
Buckets / Bins Dividers Quantity (No.):	~
Maximum Total Load Capacity (kg):	~
Buckets / Bins A: Quantity / Size (mm):	~
Buckets / Bins B: Quantity / Size (mm):	~
Buckets / Bins C: Quantity / Size (mm):	~
Buckets / Bins D: Quantity / Size (mm):	~
Dimensions (L x W x H) (mm):	3878 x 610 x 1830
Nett Weight (kg):	103



### Description

Industrial steel shelving which is supplied in bays 1955mm (L) x 610mm (W) x 1830mm (H) with a silver corrosive resistant powder coated finish.

Each bay consists of four levels with wire mesh inserts, each shelf has a capacity of 364kg. The vertical posts have provision to adapt an optional racking extensions (S014A) to double the storage. The shelf rails are secured in position and locked in via a wedge system. Simply very easy to assemble without the use of any tools.

### Features

- RSS-4WS - Industrial Steel Shelving - (S014)
- 364kg capacity per shelf
- Industrial 4 shelves with reinforced steel wire grid pattern mesh
- Adjustable shelf height position with interlocking tabs
- Silver corrosive resistant powder coated finish
- Vertical posts have double sided punched holes to connect optional extension bay
- Vertical posts are 64 x 38 x 1.6mm heavy duty C-section
- Cross member supports for wire mesh are 70 x 18 x 1.6mm heavy duty C-section
- Strengthening side supports are 40 x 18 x 1.4mm C-section
- 1955 x 610 x 1830mm (LxWxH) assembled dimensions
  
- RSS-4WSA - Industrial Steel Shelving Extension - (S014A)
- 364kg per shelf capacity when attached to RSS-4WS shelving
- Industrial 4 shelves with reinforced steel wire grid pattern mesh
- Adjustable shelf height position with interlocking tabs
- Silver corrosive resistant powder coated finish
- Vertical post has double sided punched holes to connect optional extension bay
- Vertical post is 64 x 38 x 1.6mm heavy duty C-section
- Cross member supports for wire mesh are 70 x 18 x 1.6mm heavy duty C-section
- Strengthening side supports are 40 x 18 x 1.4mm C-section
- 1923 x 610 x 1830mm (LxWxH) assembled dimensions

Product Brochure For K232

**Specific Features**



RSS-4WS Industrial Shelving



RSS-4WSA - Industrial Steel Shelving Extension



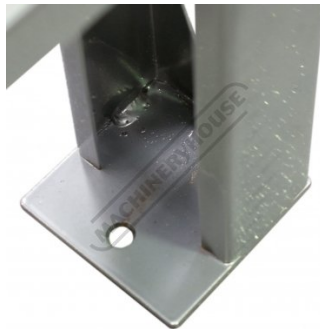
External Shelf Locking System



Internal Shelf Locking Wedge Type System



Shelf Wire Mesh



Foot Post with Bolt Down Provisions

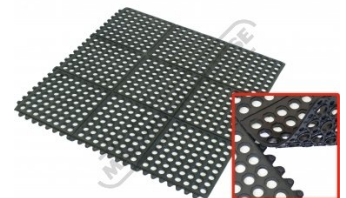
**Recommended Accessories**

**S014A**  
 Industrial Steel Shelving  
 Extension

**S014D**  
 2 x Drawer System - Suits  
 Industrial Steel Shelving

**M800**  
 Rubber Mat - Anti-Fatigue

**M805**  
 Rubber Mat - Anti-Fatigue



Product Brochure For K232

**A380**  
 Steel Work Bench - 3 x Lockable  
 Drawers



**T690**  
 Workshop Series Tool Chest



**T695**  
 Workshop Series Roller Cabinet



**T720**  
 Industrial Series Tool Chest



**T724**  
 Industrial Series Roller Cabinet



**T726**  
 Industrial Series Side Locker



**A420**  
 Industrial Work Bench



**A426**  
 Industrial Backing Panel - Bench  
 Mount



**T774**  
 Industrial Storage Cabinet



**T775**  
 Industrial Tooling Cabinet



**T762**  
 Industrial Storage Cabinet



**T764**  
 Industrial Tooling Cabinet



Product Brochure For K232

[sales@machineryhouse.com.au](mailto:sales@machineryhouse.com.au)  
[www.machineryhouse.com.au](http://www.machineryhouse.com.au)

T670

Platform Trolley - 300kg  
Capacity

T672

Platform Trolley - 300kg  
Capacity

