

Product Brochure For F320

MB-210 - Meat & Bone Band Saw - Stainless Steel

185 x 240mm Capacity
 Bench Model

Ex GST	Inc GST
\$1,090.00	\$1,199.00
\$950.00	\$1,045.00
Special Ends 17/12/2018	



ORDER CODE:	F320
MODEL:	MB-210
Type:	Meat & Bone Saw & Stainless Steel
Capacity:	185 x 240mm
Band Saw Blade Size (L x W x T) (mm):	1650 x 13
Band Saw Blade Code:	F320A & F320B
Motor Power (kW / hp):	0.75 / 1
Voltage (V):	240
Nett Weight (kg):	55



Description

High quality food grade stainless steel construction

Features

- Perfect for the home butcher, farmer or restaurant
- Full stainless steel construction
- Table size 440 x 465mm
- 185mm throat depth x 240mm height capacity
- 0.75kW/1hp, 240V motor

Includes

- Includes integrated safety push device

Product Brochure For F320

Specific Features



Front View



Left View



Rear View



Right View



Top View



Top View Guard Up



Side View



Side View Guard Up



Blade Guard Up



Power Switch



Blade Guard Down



Adjustable Length Stop Guide



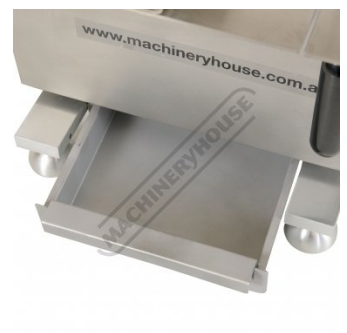
Table



Length Stop Guide



Length Stop Graduations



Bottom Tray

Product Brochure For F320

sales@machineryhouse.com.au
 www.machineryhouse.com.au



Blade Tension Handle



Blade Guard Door Handle



Side View With Blade Guard Open



Top Blade Wheel



Bottom Blade Wheel



Bottom Blade Wheel Setup



Safety Micro on Blade Guard



Stainless Steel Feet

Recommended Accessories

F320A

Band Saw Blade - Meat & Bone

F320B

Band Saw Blade - Meat & Bone

F370

Professional Butchers Knife Set
 - 11 Piece

F298

Stainless Steel Work Bench



Product Brochure For F320

sales@machineryhouse.com.au
www.machineryhouse.com.au

F280
Stainless Steel Island Work
Bench



F310
Stainless Steel Drawer - Mounts
Under Bench



F355
Sausage Stuffer - Stainless
Steel



F340
Mince Mixer - Stainless Steel



F330
Electric Meat Mincer - Stainless
Steel

