

## K11 SERIES - 3 Jaw Self Centring Lathe Chuck

Ø200mm  
 Back Plate Mount

**Ex GST**  
**\$220.00**

**Inc GST**  
**\$242.00**



|                     |                  |
|---------------------|------------------|
| ORDER CODE:         | C205             |
| Mounting Type:      | Back Plate Mount |
| Chuck Size (mm):    | Ø200             |
| Outside Jaw (mm):   | 4 - 85           |
| Inside Jaw (mm):    | 65 - 200         |
| Speed (rpm):        | 3000             |
| D1 (mm):            | 165              |
| D2 (mm):            | 180              |
| D3 (bore) (mm):     | 65               |
| H (mm):             | 109              |
| H1 (mm):            | 75               |
| H2 (mm):            | ~                |
| h (lowercase) (mm): | 5                |
| z-d (mm):           | 3 x M10          |
| Nett Weight (kg):   | 16.5             |



### Description

K11 Series cast iron body lathe chucks are built to GB/T 4346.2-2002 standard, and supplied with one piece standard and reverse jaws.

World-class and industry leader in manufacturing manual lathe chucks for over 30 years. ToolMaster precision tolerance lathe chucks are ISO 9001-2000 approved, and ensure high quality with accuracy testing on every chuck.

### Includes

- Outside jaws
- Inside jaws
- Mounting screws
- Chuck key

**Specific Features**



Front View



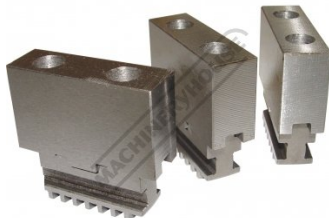
Rear View



Parts

**Recommended Accessories**

**C7651**  
 Soft Jaw & Base Set



**L287**  
 D1-4 Camlock Back Plate



**L2875**  
 D1-5 Camlock Back Plate



**L289**  
 D1-6 Camlock Back Plate



**L286**  
 D1-8 Camlock Back Plate



**L2884**  
 D1-11 Camlock Back Plate



**A358**  
 Sky Hook Lifting Device



**A358A**  
 Chuck Hook



Product Brochure For C205

sales@machineryhouse.com.au  
www.machineryhouse.com.au

A358B  
Choker Collar



A358C  
Bolt Down Adaptor



C2864  
Chuck Key



M055  
Magnetic Base and Dial Indicator

