

## Product Brochure For S1282

### Cold Saw, Includes Stand - SCV400

135 x 100mm Rectangle Capacity

Ø400mm Blade, Dual Speed 42 / 85rpm & Self Centring Vice



ORDER CODE:	S1282
MODEL:	SCV400
Cutting Head Action:	Manual
Operation Type:	Swivel - Dual Mitre
Round Capacity @ 90° / 45° (mm):	130 / 120
Square Capacity @ 90° / 45° (mm):	110 / 95
Rectangle Capacity @ 90° / 45° (WxH) (mm):	135 x 100 / 95 x 100
Blade Size - Diametre. x Bore (Ø) (mm):	400 x 40
Vice Clamping Fixture:	Manual - Dual
Coolant System:	Yes
Table Working Height (with Stand) (mm):	1110
Blade Speed (rpm):	21 / 42
Motor Power (kW / hp):	1.5 / 2
Voltage / Amperage (V / amp):	415
Nett Weight (kg):	220



#### Description

Brobo - Cold Saw: Similar to the S400 Series, the SCV400 manual clamping saw is purposely built for accurate cutting of ferrous materials. The self centring clamping vice enables the saw unit to replicate parallel and angled cuts with minimum burr defects. This machine has the capability to cut beyond 45°.

#### MODELS AVAILABLE

- S315D, S350D & S400B ferrous metal cutting saws are specifically developed for precision cutting of steel profiles, solids and tubes
- NF350 - High speed machine for Aluminium and non-ferrous cutting
- SCV - Manual clamping saw (Self Centring Vice) is purposely built for accurate cutting of ferrous materials
- VS - Manual clamping saw (240 Volt Dial Variable Speed System Electronically Controlled) is purposely built for accurate cutting of ferrous materials

#### Features

- QUALITY AUSTRALIAN MADE MACHINES
- Industrial cold cutting saw with a self centring vice that is capable of a burr-free milled finish
- Mitre locking device stops at 45° left, straight 90°, and 45° right, extremely accurate mitre cutting
- Fully integrated coolant system provided on all machines
- Heavy gearbox drive designed and built to last
- Spindle and drive unit immersed in oil solution and enclosed within gearbox housing for smooth performance and reduced machine wear.
- Every unit is provided with a high speed steel blade for general purpose cutting of ferrous solid and tube profiles
- Saws supplied with facilities for bench mounting onto work bench, or complete with an integrated stand
- Includes a blade and stand
- 2 year warranty

#### Includes

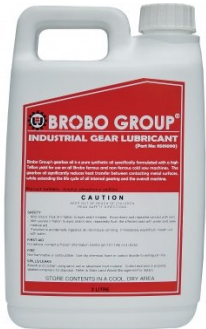
- Self centring Clamping Vice
- Coolant pump system
- Blade
- Stand

Product Brochure For S1282

**Recommended Accessories**

S092

BROBOLUBE Industrial Gearbox Oil



S138

HSS Cold Saw Blade



S138A

HSS Cold Saw Blade



S138B

HSS Cold Saw Blade



S138C

HSS Cold Saw Blade



S138D

HSS Cold Saw Blade



S138E

HSS Cold Saw Blade



S138F

HSS Cold Saw Blade



Product Brochure For S1282

**S139A**  
 HSS + COBALT Cold Saw  
 Blade



**S139B**  
 HSS + COBALT Cold Saw  
 Blade



**S139C**  
 HSS + COBALT Cold Saw  
 Blade



**S139D**  
 HSS + COBALT Cold Saw  
 Blade



**S139E**  
 HSS + COBALT Cold Saw  
 Blade



**S090A**  
 Soluble Metal Cutting Fluid - 1  
 Litre



**S090**  
 Soluble Metal Cutting Fluid - 5  
 Litre



**S091**  
 Soluble Metal Cutting Fluid - 20  
 Litre



**L300**  
 Magnetic Swarf Remover



**M9991**  
 Magnetic Floor Sweeper



**L812**  
 Roller Conveyor



**L814**  
 Roller Conveyor Stand



Product Brochure For S1282

W343  
 Roller Stand



W343A  
 Roller Stand



W3434  
 Roller Stand



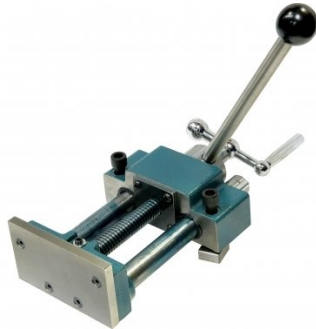
W3436  
 Roller Stand - V-Type



S093  
 Screw Retaining



S100  
 Vice



S094  
 Leadscrew Handle / Nut  
 Assembly



S096  
 Vice Nut - Brass Type



S095  
 Dowel Pin



S097  
 Love Joy Coupling



S097A  
 Insert Love Joy



S098A  
 Coolant Pump



Product Brochure For S1282

**S098B**  
 Coolant Pump & Conversion Kit



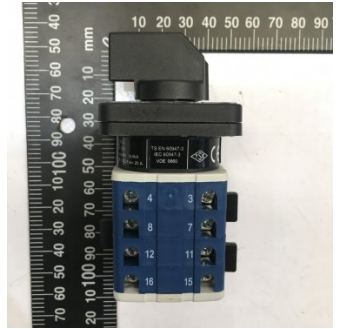
**S099A**  
 Return Spring Conversion Kit



**S099B**  
 Return Spring



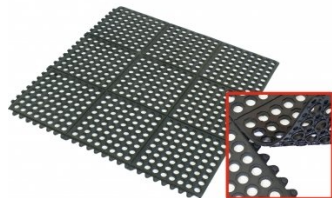
**S098**  
 ON/OFF SWITCH 240V



**M800**  
 Rubber Mat - Anti-Fatigue



**M805**  
 Rubber Mat - Anti-Fatigue



**O000**  
 SpillFix Universal Organic Absorbent



**O043**  
 Rust & Corrosion Preventive



**O042**  
 General Purpose Lubricant & Corrosion Inhibitor



**O040**  
 Rust & Corrosion Preventive



**O044**  
 Rust & Corrosion Preventive

