

Product Brochure For M821

CNC Milling Machine - NCM-3000

(X) 290mm (Y) 120mm (Z) 270mm



ORDER CODE:	M821
MODEL:	NCM-3000
Travel (X Axis) (mm):	290
Travel (Y Axis) (mm):	120
Travel (Z Axis) (mm):	270
Rapid Traverse (X, Y, Z Axis) (m/min):	~
Motor Torque (X & Y Axis) (Nm):	4
Motor Torque (Z Axis) (Nm):	6
Table T Slot (size/distance/number) (-):	12
Position Accuracy (mm):	0.01
Automatic toolchanger (Pockets):	~
Spindle Taper:	3MT
Spindle Speed Range (rpm):	100 - 5000
Spindle Motor Torque (Nm):	~
Motor Power (kW / hp):	1 / 1.3
Voltage / Amperage (V / amp):	240 / 10
Dimensions (mm):	1100 x 1040 x 2000
Nett Weight (kg):	270



Description

The NCM-3000 is a CNC milling machine which is equipped by 3-Axis stepping motors, all 3-Axis have hardened ballscrews. It is standard with a variable speed spindle motor, limit/home switches and easy change spindle.

Converts a standard PC to a fully featured CNC control. Up to 6-Axis control can be achieved, allows direct import of DFX, BMP, JPG and HPGL files to generate the G code. It includes visual G code display as well as multiple programming wizards to provide complex programming techniques into simple to use menu's. The entire machine is driven by the PC.

Features

- 5000rpm maximum spindle speed
- 550 x 160mm table size
- 1000W 240V main spindle motor
- 290mm X-Axis table travel
- 120mm Y-Axis table travel
- 270mm Z-Axis table travel
- 4N Motor of X-Axis
- 4N Motor of Y-Axis
- 6N Motor of Z-Axis
- 230mm throat
- 12mm T-slot size
- Number of T-slots on table is 3
- 0.01mm Position accuracy
- 3MT Spindle taper
- 100-5000rpm Spindle speed
- 5.5NM motor torque @ 1500rpm
- Dimensions (LxWxH) 110 x 104 x 200cm
- Fully enclosed guarding
- Includes PC with Software pre-loaded, screen, keyboard and mouse
- 4th axis (optional)

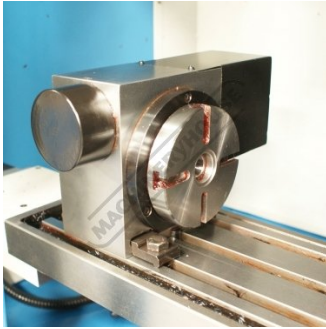
Includes

- MT3 x ER16 Collet chuck (C104)
- ER16 Collet set 1-10mm (C831)

Product Brochure For M821

- HSS End mills 3, 4, 5, 6, 7, 8, & 10mm (M3236)
- 73mm Toolmakers vice (V365)
- 1/2" Tee nut (C084)

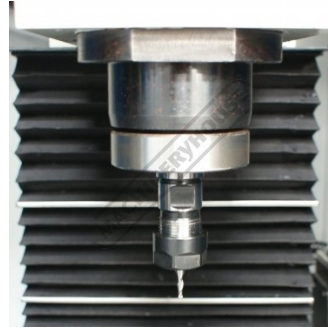
Specific Features



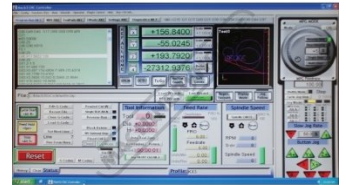
Optional 4th Axis



Computer Hardware



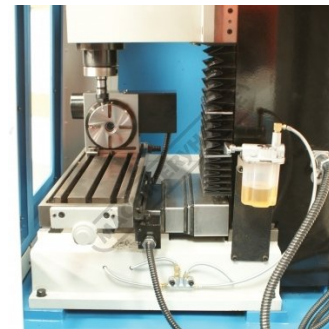
Spindle



Mach 3 Software



Safety Viewing Doors



Machine Side View



Lubrication Pump for Slid Ways



Rear View Enclosed Machine



Work Light



Emergency Stop Switch



Main Power Switch



MT3 x ER16 Collet Chuck (C104)



ER16 Collet Set 1 10mm (C831)



73mm Toolmakers Vice (V365)