

Product Brochure For L053

## KYOCERA Carbide Inserts - Turning - WNMG 080408PMG

Grade CA125P - General Purpose Steel  
 10 Inserts Per Pack

**On Sale**

Ex GST	Inc GST
<del>\$130.00</del>	<del>\$143.00</del>
<b>\$108.18</b>	<b>\$119.00</b>



ORDER CODE:	L053
MODEL:	WNMG 080408PS
Grade:	CA125P
Application:	General Purpose Steel
Pieces in Set (No.):	10
I.C. (mm):	8.7
Thickness (S) (mm):	4.76
Hole Diameter Ø (D1) (mm):	5.16
Corner Radius (RE) (mm):	0.8
Relief Angle (Deg):	~
d (mm):	12.7
Insert shape:	~
Use Classification:	~
Clearance Angle:	~

**KYOCERA**  
 JAPANESE CARBIDE



### Description

CA125P Grade CVD Coated Carbide for Steel  
 Suitable for continuous to heavy interrupted machining, these inserts are designed for general-purpose applications.

PMG Chipbreaker

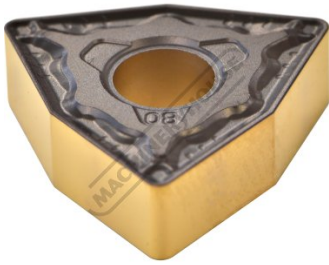
Covers a wide range of machining applications from medium machining to roughing.  
 Excellent wear resistance with low cutting force design. Reduces chip shape inconsistencies and improves tool life.

### Features

- Japanese Made
- CVD Coated Carbide with Thin Ultra-fine TiCN Coating
- 10 Inserts Per Pack

Product Brochure For L053

**Specific Features**



Tip

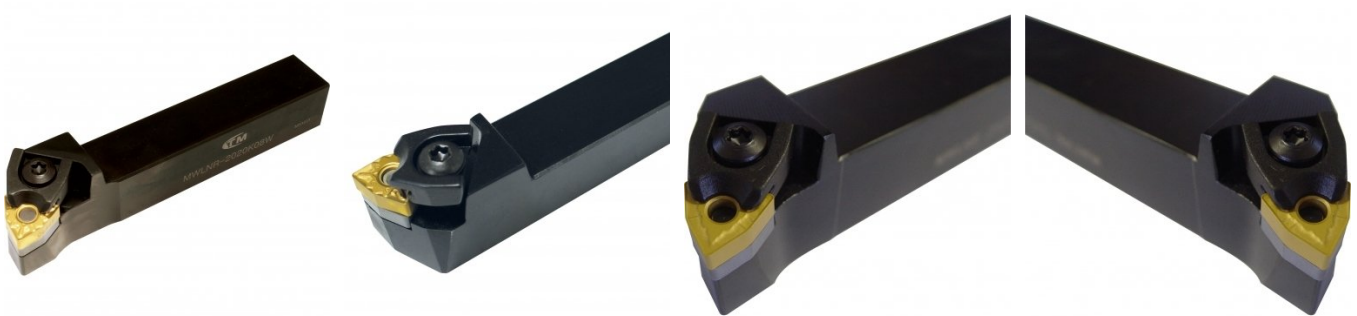
**Recommended Accessories**

L039  
 Right Hand Turning Tool Holder

L040  
 Left Hand Turning Tool Holder

L041  
 Right Hand Turning Tool Holder

L042  
 Left Hand Turning Tool Holder



L415  
 Right Hand Boring Bar

L416  
 Right Hand Boring Bar

L452  
 Lathe Turning Tool Kit - 3 piece  
 Insert Type

L453  
 Lathe Turning Tool Kit - 3 piece  
 Insert Type

