

Product Brochure For D165

## Radial Arm Drill - RAD-900

Ø38mm Drilling Capacity  
 290 - 920mm Spindle To Column



**On Sale**

Ex GST	Inc GST
<b>\$16,790.00</b>	<b>\$18,469.00</b>
<b>\$15,990.00</b>	<b>\$17,589.00</b>

ORDER CODE:	D165
MODEL:	RAD-900
Drill Capacity (mm):	Ø38
Thread Tapping Capacity:	M20
Spindle Taper (MT):	4
Spindle Travel (mm):	200
Quill Diameter (mm):	70
Spindle To Column (min-max) (mm):	290 - 910
Spindle To Box Table (max) (mm):	785
Spindle To Base (max) (mm):	1110
Table Type:	Square
Box Table Size (LxWxH) (mm):	550 x 405 x 315
T-slot Size (mm):	20
Automatic Quill Feed (mm/rev):	(0.05, 0.09, 0.15)
Work Light:	Yes
Coolant System:	Yes
Spindle Speed Steps (No.):	6
Spindle Speed Range (rpm):	88 - 1500
Motor Power (kW / hp):	1.5 / 2
Motor Voltage (V):	415
Nett Weight (kg):	1270



### Description

The RAD-900 Radial Arm Drill made in one of our precision top quality factories located in Taiwan, and has proven to be a very popular & favourable machine in the Tool & Die manufacturing industry. The machine base top surface and box table have been ground finished to perfection offering superior parallelism & squareness to achieve the highest of accuracy that is required by the professional tool maker. This machine also has an auto power feed system, with 3 speeds to select from and are relevant to revs per minute, coolant system with flexible hose & nozzle, this drill is known for its quiet & smooth operation for the past 20 years.

The user-friendly unique 4-way joystick control operates the spindle speed direction and the rise and lowering of the head. The machine is also fitted with an amp load metre providing direct and instant load feedback on your current drilling job. The front control panel has a very helpful drilling chart with suggested speeds to use on the different material types with the corresponding drill bit size, this is a general guide from where to begin as each job must be adjusted individually.

### Features

- Precision Taiwanese manufactured radial drilling machines
- 4-way joystick control for motorised arm rise/fall & forward/reverse spindle direction
- 3 Speed auto down-feed: 0.05, 0.09, 0.15(mm/rev)
- Coolant pump system with flexible hose
- Amp meter providing direct reading of spindle load during operation
- Work light mounted underneath arm providing direct light on work piece
- Heavy duty tee-slotted work table
- Oil-bath lubricated gear drive
- Micro down feed hand wheel for quill
- Wear strip on arm ensuring greater wear resistance whilst maintaining head rigidity
- Quiet and smooth operation
- Reliability - sold for over 20 years
- Manufactured in Taiwan

Product Brochure For D165

Specific Features



Front View



Control Panel



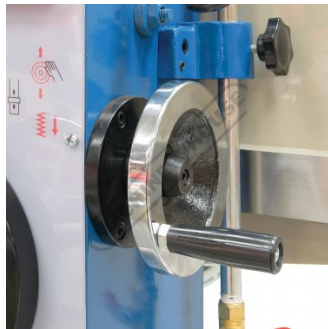
4 Way Joy Stick Control for Arm Rise-Fall-Spindle Direction



Auto Down Feed and Speed Chart



Quill Handle



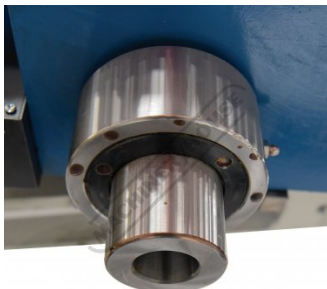
Micro Down Feed Hand Wheel



Speed Selectors



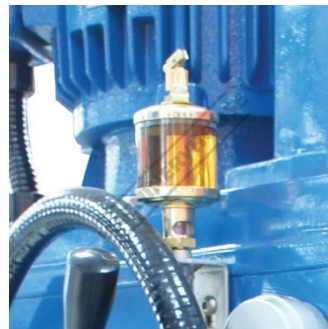
Safety Chuck Guard



Quill



Motor-Head Clamp



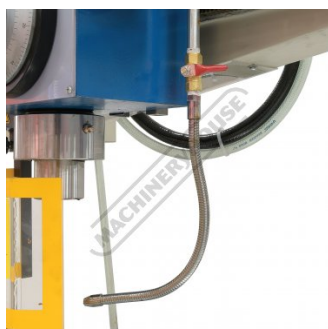
Oil Level



Foot Mounting Points



Head Front View



Coolant Hose



Coolant System



T Slotted Base-Box Table

Product Brochure For D165



Box Table



Arm Swivel Clamp



Arm Stop



Base Clamp



Motorised Arm Rise and Fall



Head Right View



Head Left View



Rear View



Left View

Product Brochure For D165

**Recommended Accessories**

V138  
 Drill Press Vice

V139  
 Drill Press Vice

D339  
 4MT Morse Taper Shank Drill Bit

D424  
 Drill Sleeve - Morse Taper



S090A  
 Soluble Metal Cutting Fluid - 1  
 Litre

S090  
 Soluble Metal Cutting Fluid - 5  
 Litre

S076  
 Cutting Tool Lubricant Fluid -  
 500ml

S077  
 Drilling, Tapping & Cutting Tool  
 Lubricant Spray - 400g



Product Brochure For D165

**S075**  
 Cutting Tool Lubricant Paste - 200g



**S074**  
 Cutting Tool Lubricant Paste - 500g



**L300**  
 Magnetic Swarf Remover



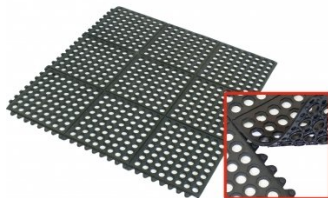
**M9991**  
 Magnetic Floor Sweeper



**M800**  
 Rubber Mat - Anti-Fatigue



**M805**  
 Rubber Mat - Anti-Fatigue



**O000**  
 SpillFix Universal Organic Absorbent



**O043**  
 Rust & Corrosion Preventive



**O042**  
 General Purpose Lubricant & Corrosion Inhibitor



**O040**  
 Rust & Corrosion Preventive



**O044**  
 Rust & Corrosion Preventive

